

Clemson University

SCHOOL OF NURSING

College of Behavioral, Social, and Health Sciences



**Center of Excellence
in Nursing Education**

UNDERGRADUATE HANDBOOK

2023 – 2024

BS-Traditional | BS-Accelerated | Accelerated Second Degree | RNBS

CLEMSON UNIVERSITY
School of Nursing
 College of Behavioral, Social and Health Sciences
 TABLE OF CONTENTS

SECTION I: THE SCHOOL OF NURSING

Welcome to the School of Nursing5
 The School of Nursing Overview5
 Accreditation: Commission on Collegiate Nursing Education (CCNE).....6
 School of Nursing Mission, Vision, and Goals6
 Statement of Equal Opportunity.....6
 Organizational Chart.....7

SECTION II: OBJECTIVES & CURRICULUM INFORMATION

Baccalaureate Program Overview & Objectives8
 Nursing Bachelor of Science Program Tracks.....8
 B.S. Traditional Track Curriculum Plan 10
 B.S. Accelerated Track Curriculum Plan 11
 First-Year and Upper-Class Change of Major Students 12
 B.S. Upper-Class Transfer & Change of Major Track Curriculum Plan 13
 B.S. Accelerated Second Degree (ASD) Track Curriculum Plan..... 14
 RNBS Curriculum Information15
 Prerequisite and Required Courses 15
 Exemption Credit for NURS Courses..... 16
 Curriculum Progression – Fall Start 16
 Curriculum Progression – Spring Start 16
 Potential Graduate Courses for RNBS Students..... 17
 Transfer Credit Evaluation 17
 Residency Requirement..... 17
 Clinical Course Requirement..... 17
 Independent Study Guidelines (NURS 4990) 17
 Special Topics Course (NURS 3000) 18
 Summer Semester 18
 Policies Regarding RNBS Progression 18
 Bachelor of Science in Nursing Course Descriptions 19
 Departmental Honors Program..... 22
 Essential Functions for Nursing Students..... 23
 Kaplan..... 24

SECTION III: ADVISING, REGISTRATION, POLICIES, & PROCEDURES

School of Nursing Policies Regarding Progression..... 25
 Course Space Priority..... 25
 Validation of Prior Coursework 25
 Student Records and Confidentiality..... 25
 Advising..... 26
 Grading Policies for Undergraduate Nursing Courses..... 26
 Anticipated Absences 26
 Class Attendance Policy 27

Clinical Absences and Tardiness	27
Communication with Instructors	28
Requesting Accommodations	28
Guidelines for Expressing Student Concerns	28
Reserve Officers Training Corps (ROTC) Information	29
Textbook Policy	29
Academic Integrity Policy	30
Policies Governing Student Behavior	30
Code of Conduct	30
Civility Statement	32
Standards of Professional Practice.....	32
Recommended Technology Capabilities	33
Distance Education Guidelines	33
Netiquette	34
Helpful Websites	34
Peer to Peer File Sharing	34
Clinical Laboratory Requirements.....	36
Helpful Suggestions.....	36
Clinical Requirements Checklist and Health Form.....	37
Additional Health Information.....	38
Health Protection Policy for Faculty and Students.....	38
Student Policy Governing Use and/or Abuse of Drugs and/or Alcohol	39
Drug Policy and Procedure Statement	39
Procedure for Drug Testing.....	39
Refusal	39
Positive Results.....	40
Reasonable Suspicion of Drug/Alcohol Use	40
Confidentiality	40
Readmission.....	40
Clinical Dress Code	41
Statement of Unsafe Clinical Practice	42
Guidelines for Evaluation of Student Clinical Performance	42
Transportation to the CU Nursing Building in Greenville.....	43
Clinical Laboratory Transportation	43
Cancellation of Clinical Labs Due to Hazardous Driving Conditions.....	43
Social Media Policy.....	45
Policy for Use of Personal Digital Devices in the Clinical Area.....	46
Personal Digital Device Infection Control	46
Summary.....	47
Identity Precautions.....	47
SECTION IV: SCHOOL OF NURSING FACILITIES, RESOURCES, & STUDENT ORGANIZATIONS	
CBSHS Academic Advising Center	48
Academic Advising Center Personnel for Nursing.....	48
Registration Advisement.....	48
Permission to Take Courses Away From Clemson	48
Dropping or Adding Classes.....	49

Scholarships	49
Communicating with your Advisor	49
Joseph F. Sullivan Center	49
Clinical Learning & Research Center	49
Mission Statement.....	49
Contact	49
Hours	49
Services.....	50
Book/Video/CD/DVD Collection	50
Lost Items.....	50
Printing and Copying	50
Room Reservations.....	50
Scanning Services.....	50
Guidelines for Clinical Learning and Research Center Operations.....	51
Clinical Learning Center – Simulation Laboratory.....	51
Mission.....	51
Objectives.....	51
Hours.....	51
Services.....	51
Simulation Lab Agreement.....	51
Computer Resources.....	52
User IDs and Passwords	52
Email Forwarding	52
Sigma Theta Tau, Gamma Mu Chapter	52
South Carolina Student Nurses’ Association (SNA) at Clemson University.....	54
Student Representatives on School Program Committees	54
Student Class Representatives	54
SECTION V: GRADUATION INFORMATION	
National Council Licensure Examination for Registered Nurses (NCLEX-RN)	55
Pins for Professional Convocation	55
Program Pin and Cap.....	55
School of Nursing Estimated Expenses.....	56
SECTION VI: STUDENT FORMS	
Understanding of Alcohol and Drug Policy & Permission for Drug Screening.....	57
School of Nursing Handbook	57
Nursing Student Acknowledgement of Policies and Expectations.....	58
Personal Health History	59
Simulation Lab Agreement.....	60
Essential Functions for Nursing Student.....	61

SECTION I: THE SCHOOL OF NURSING

Welcome to the School of Nursing

Welcome to the School of Nursing. We want you to have a rewarding and satisfying experience with us. This handbook contains information that is vital to your success as a nursing student. It serves as a supplement to the current Undergraduate Announcements. The Undergraduate Announcements is the major source of information about university academic policies and this handbook is the major source of academic policies for the School of Nursing Undergraduate Program. These documents should be referred to whenever you have questions about policies, however, students should review the School of Nursing Undergraduate Handbook at the beginning of each academic year as it is updated annually. The faculty and staff will assume that you are familiar with this information, so please take a few minutes of your valuable time to study both the Announcements and the Handbook. Again, welcome to the School of Nursing and Clemson University, and best wishes in your studies.

The School of Nursing Overview

The School of Nursing is an integral part of Clemson University, a land grant, state supported institution of higher learning. The school is committed to the purposes of the university which are teaching, research and service to the people of South Carolina, the nation and the world. The goal of Clemson University School of Nursing is to prepare nurses for professional practice and leadership, and to advance nursing knowledge.

In a climate of rapid changes in the health care system, nursing is recognized historically and currently as a major health care provider in health promotion, health maintenance and rehabilitation. Nurses have more sustained contact with recipients of health care than any other health care professional. They are often the first responder to health care problems of the public. In addition to being the provider of direct care and the manager of health care by others, nurses are the advocates, teachers, and counselors for health care recipients. Nurses are increasingly involved in complex decisions crucial to the life and safety of patients. They accept greater responsibility for care, which was previously assumed by other disciplines. As a result of these rapid changes in the health care system, the complexity of nursing practice has increased significantly. Thus, a broad and in-depth educational experience is needed to prepare the professional nurse of the future.

The School of Nursing contributes to the improvement of the health and quality of life of South Carolinians through its activities in teaching, research and service. Dr. John Whitcomb is the Director and Chief Academic Nursing Officer. Dr. Ann Wetsel is the Associate Director for the School of Nursing, Dr. Lucia Gonzales is the Associate Director for Research for the School of Nursing, Mrs. Leslie Ravan is the Director of Undergraduate Programs and Dr. Nicole Davis is Director of the Graduate Programs. Mrs. Robin Metler-Atkinson rmetler@clemson.edu is the Student Services Coordinator for the BS-Traditional (BST) cohorts, Mrs. Anna Claire Butler acbutle@clemson.edu is the Student Services Coordinator for the BS-Accelerated (BSA) cohorts, and Ms. Cynthia Mihalchick mihalch@clemson.edu is the Student Services Coordinator for the Accelerated Second Degree (ASD) and RNBS Cohorts.

The College of Behavioral, Social and Health Sciences is headed by Dr. Leslie Hossfeld, Dean. The College of Behavioral, Social and Health Sciences is comprised of eight degree-granting units, Communication Studies, Political Science, Psychology, Sociology/Anthropology, Nursing, Parks Recreation and Tourism, Public Health Sciences and Youth Family and Community Studies, and multiple non-degree granting units.

Accreditation: The Commission on Collegiate Nursing Education (CCNE)

The baccalaureate degree program in nursing, the master's degree program in nursing and Doctor of Nursing Practice program at Clemson University are accredited by the Commission on Collegiate Nursing Education, 655 K Street, NW, Suite 750, Washington, DC 20001, 202-887-6791.

Mission

The mission of Clemson University School of Nursing, as a scholarly center of learning, is to educate students at the baccalaureate, master's, and doctoral levels to become healthcare professionals who advance scientific knowledge and evidence-based practice through research and outreach.

Vision

Clemson University School of Nursing will shape the future of nursing and healthcare through leadership, scholarship, and practice to optimize the health and quality-of-life for the people of South Carolina, the nation, and the global community.

Goals

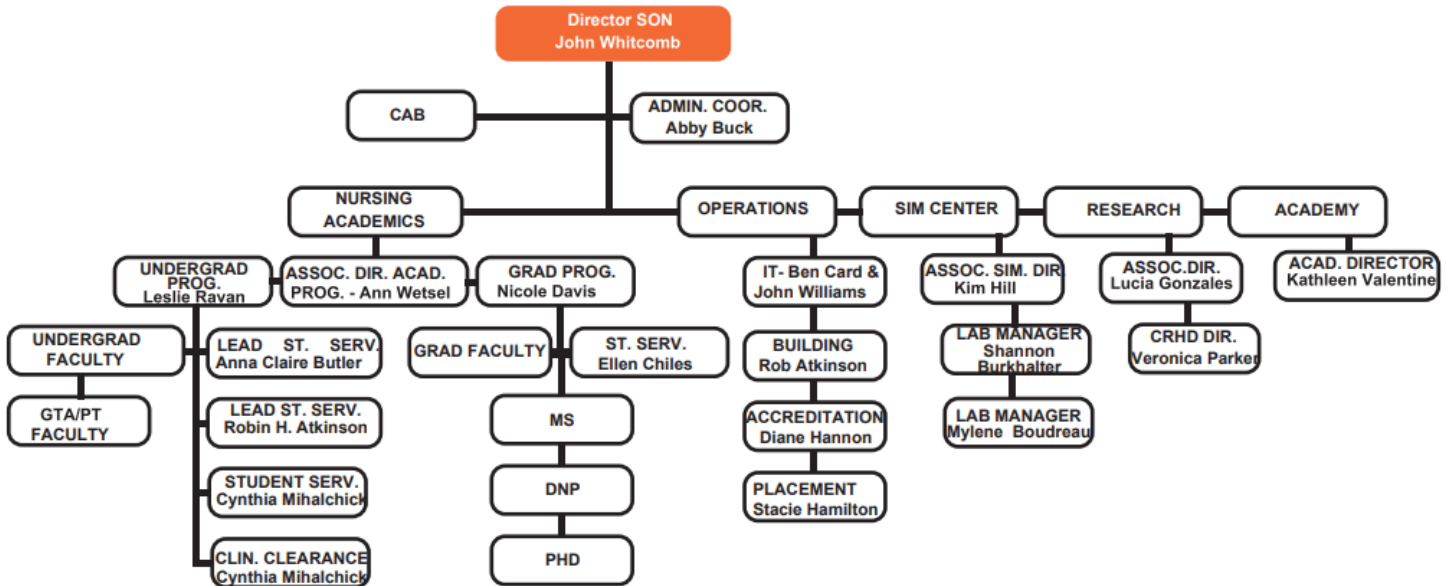
CORE STRATEGIC PILLARS

1. We will deliver the No. 1 student experience, core to our mission.
2. We will double research by 2035, working in collaboration with government and industry to advance scientific research and discovery.
3. We will transform lives, impacting the citizens of South Carolina and beyond through measurable health and economic development.

Statement of Equal Opportunity

The School of Nursing follows the University policy in conducting its programs and activities involving admission and treatment of students, employment, teaching, research and public service. *Clemson University does not discriminate against any individual or group of individuals on the basis of age, color, disability, gender, national origin, race, religion, sexual orientation or veteran's status.*

School of Nursing Organizational Chart



Legend
 CAB = Community Advisory Board
 CRHD = Center for Research on Health Disparities

SECTION II: OBJECTIVES AND CURRICULUM INFORMATION

Baccalaureate Program Overview

The Bachelor of Science with a major in nursing at Clemson University prepares professional nurses with the knowledge and skills to think critically, communicate effectively and to practice as nurse generalists. In collaboration and coordination with the interdisciplinary health team, the professional nurse provides nursing care to people of all ages in diverse settings and is accountable for practice. Baccalaureate nursing graduates will be prepared to assume leadership roles in health promotion and prevention and the management of care for individuals and groups. The Baccalaureate nursing program is based on nursing science with support from the biological and behavioral sciences as well as the humanities and serves as a basis for further professional development and graduate study.

Baccalaureate Program Objectives

Expectations of the baccalaureate nursing graduates are expressed in the outcome objectives of the curriculum. These are congruent with the mission, philosophy, organizing framework and professional standards. At the completion of the BS program, the graduate will:

1. Use communication skills to interact effectively and appropriately with individuals, families, groups in the community, and other members of the health care team.
2. Demonstrate personal and professional responsibility and accountability for personal nursing practice in accordance with the highest standards and codes of the profession.
3. Use critical thinking to provide community based professional nursing care for diverse populations across the life span in multiple settings.
4. Employ leadership and management skills and knowledge of health policy to enhance the quality of nursing care.

Nursing Bachelor of Science Program Tracks

- **BS-Traditional Track** students complete the program in four years (eight semesters).
- **BS-Accelerated Track** students complete the program in three and a half years (eight semesters).
- Students accepted via the **First Year Change of Major Track** join the BS-Accelerated Track.
- **Upper-Class Change of Major Track** students from within Clemson and transfer students from other institutions complete the program with five semesters of nursing classes and a fall graduation.
- **BS-Accelerated Second Degree (ASD) Track** students are those students who have previously earned a bachelor's degree.
- The **RNBS Completion Track** is for registered nurses who have previously completed an associate's degree in nursing.

First-Year and Upper-Class Change of Major Students

Students are eligible to apply to change their major to nursing in their freshman and upper-class years at Clemson University. Students who successfully change their major to nursing during their first year at Clemson should expect to graduate with the BS Accelerated cohort.

Upper-Class Transfer Students

Students who successfully transfer to the nursing program from another institution join the upper-class Change of Major cohort of students to form one nursing cohort that begins each fall semester. Accepted transfer students should expect to take an extra semester to complete the program.

Upper-Class Change of Major/Transfer students follow a parallel nursing plan of study for the freshman and sophomore years, exception to any nursing (NURS) course(s) and NUTR 2050. All NURS courses and NUTR 2050 must be completed at Clemson University. The NURS classes and NUTR 2050 must be taken in sequence as outlined on their respective curricula and may not be moved to other semesters. These tracks are only offered as full-time enrollments.

Clemson University School of Nursing
B.S. Traditional Track
CURRICULUM PLAN 2023-2024

FRESHMAN YEAR

Fall Semester¹		Spring Semester	
*BIOL 1030 General Biology I	3	CH 1010 General Chemistry I	4
*BIOL 1050 General Biology I Lab	1	*ENGL 1030 Accelerated Composition	3
*NURS 1020 Univ Success Skills	2	STAT 2300 Elem. Statistical Inference	3
*COMM 1500 or COMM 2500	3	PSYC 2010 Intro to Psychology	3
Arts and Humanities (Non-Literature) Req ²	3	*NURS 1400 Comp Appl. In Health Care	3
<u>Social Science Requirement⁴</u>	<u>3</u>		<u>16</u>
	15		

SOPHOMORE YEAR

Fall Semester		Spring Semester	
*BIOL 2220 Hum Anat and Phys I	4	*BIOL 2230 Human Anat and Phys II	4
*MICR 2050 Intro to Microbiology	4	*NURS 3100 Health Assessment	3
Arts and Humanities (Literature) Req ²	3	*NURS 3200 Professionalism in Nursing	3
*NUTR 2050 Nutrition for Nursing Prof	3	*NURS 3110 Health Promotion	2
<u>Elective</u>	<u>2</u>	Global Challenges Requirement ^{2,3,5}	3
	16	<u>Elective</u>	<u>1</u>
			16

JUNIOR YEAR

Fall Semester*		Spring Semester*	
ENGL 3150 Scientific Writing <i>or</i>		NURS 3030 Med-Surg II: Nurs of Adults	7
ENGL 3140 Tech <i>or</i> ENGL 3040 Business	3	NURS 3050 Psychosocial Nurs	3
NURS 3040 Pathophysiology	3	NURS 3300 Research in Nurs ^{2,3}	3
NURS 3230 Gerontology Nurs	2	<u>NURS 3330 Health Care Genetics</u>	<u>3</u>
NURS 3120 Med-Surg I: Found of Nurs	4		16
<u>NURS 3400 Pharmacotherapeutic Nurs</u>	<u>3</u>		
	15		

SENIOR YEAR

Fall Semester*		Spring Semester*	
NURS 4010 Mental Health Nurs	5	NURS 4030 Med-Surg 3: Complex Nurs Adults	5
NURS 4110 Nurs of Children	5	NURS 4150 Community Hlth Nurs	4
<u>NURS 4120 Nurs Women & Fam</u>	<u>5</u>	<u>NURS 4100 Leadership Mgmt. & Nurs Care Pract</u>	<u>6</u>
	15		15

TOTAL HOURS = 124

Footnotes:

- ¹ Students scoring below the designated score on the CMPT must take an approved math prerequisite for STAT 2300 during this semester.
 - ² See General Education Requirements.
 - ³ All students must fulfill the global challenges requirement to be eligible for graduation. Six credit hours of Clemson approved global challenges courses must be taken. Course transfers from other universities are not eligible. The required Nurs 3300 (Research) fulfills 3 of the 6 credit hours. Student is responsible for choosing and taking another non NURS eligible course to fulfill the remaining 3 credit hours. See global challenges approved courses.
 - ⁴ See approved SC REACH Act courses. All undergraduate students who enter the university during summer 2021 or after must have credit for an approved social science course that also satisfies the SC REACH Act requirement. Students that have already earned credits that satisfy the SC REACH Act requirement may enroll in any approved social science course.
 - ⁵ If this requirement is satisfied by another course in the curriculum, elective hours must be taken to cover the credit hours.
- *Classes and semesters with an asterisk cannot be moved to another semester.

Notes:

- A minimum grade of a C is required in the following courses for progression to junior year clinical courses: BIOL 1030/BIOL 1050 or BIOL 1100, BIOL 2220, BIOL 2230, CH 1010, MICR 2050 or MICR 3050, NUTR 2050, STAT 2300, and the approved MATH pre-requisite if required.
- A minimum grade of C is required in all NURS nursing courses.
- To progress in junior level nursing courses, students may not have received more than 2 final course grades that are fulfilling nursing degree requirements of less than a C in the last five years. Academic forgiveness counts as an attempt.
- A minimum grade point ratio of 2.5 is required for registration in each nursing course.
- Additionally, if the student's nursing GPA drops below a 2.5, the student is not eligible to continue in nursing.
- Students may repeat one nursing course only. Withdrawing with a W from the course or applying Academic Forgiveness counts as an attempt. Students who fail a second nursing course are not eligible to continue in nursing. A student who receives concurrent D's in Pathophysiology and Pharmacology may be eligible to retake both courses concurrently with prior approval from the School of Nursing.
- Students may not exceed a maximum of two attempts, to successfully complete any NURS course. Students who are not successful on a second attempt are not eligible to continue in nursing.
- Students must pass didactic and clinical components to pass all clinical courses.

**Clemson University School of Nursing
B.S. Accelerated Track
CURRICULUM PLAN 2023-2024**

FRESHMAN YEAR

<u>Fall Semester¹</u>		<u>Spring Semester</u>	
*BIOL 1030 General Biology I	3	CH 1010 General Chemistry I	4
*BIOL 1050 General Biology I Lab	1	*ENGL 1030 Accelerated Composition	3
*NURS 1020 Univ Success Skills	2	STAT 2300 Elem. Statistical Inference	3
*COMM 1500 or COMM 2500	3	PSYC 2010 Intro to Psychology	3
Arts and Humanities (Non-Literature) Req ²	3	<u>*NURS 1400 Comp Appl. In Health Care</u>	<u>3</u>
<u>Social Science Requirement⁴</u>	<u>3</u>		16
	15		

SOPHOMORE YEAR

<u>Fall Semester</u>		<u>Spring Semester</u>	
*BIOL 2220 Hum Anat and Phys I	4	*BIOL 2230 Human Anat and Phys II	4
*MICR 2050 to Microbiology	4	*NURS 3100 Health Assessment	3
Arts and Humanities (Literature) Req ²	3	*NURS 3200 Professionalism in Nursing	3
*NUTR 2050 Nutrition for Nursing Prof	3	*NURS 3110 Health Promotion	2
<u>Elective</u>	<u>2</u>	Global Challenges Requirement ^{2,3,5}	3
	16	<u>Elective</u>	<u>1</u>
			16

JUNIOR YEAR

<u>Fall Semester*</u>		<u>Spring Semester*</u>	
ENGL 3150 Scientific Writing <i>or</i>		NURS 3030 Med-Surg II: Nurs of Adults	7
ENGL 3140 Tech <i>or</i> ENGL 3040 Business	3	NURS 3050 Psychosocial Nurs	3
NURS 3040 Pathophysiology	3	NURS 3300 Research in Nurs ^{2,3}	3
NURS 3230 Gerontology Nurs	2	<u>NURS 3330 Health Care Genetics</u>	<u>3</u>
NURS 3120 Med-Surg I: Found of Nurs	4		16
<u>NURS 3400 Pharmacotherapeutic Nurs</u>	<u>3</u>		
	15		

SENIOR YEAR

<u>Summer Semester*</u>		<u>Fall Semester*</u>	
NURS 4010 Mental Health Nurs	5	NURS 4030 Med-Surg 3: Complex Nurs Adults	5
NURS 4110 Nurs of Children	5	NURS 4150 Community Hlth Nurs	4
<u>NURS 4120 Nurs Women & Fam</u>	<u>5</u>	<u>NURS 4100 Leadership Mgmt. & Nurs Care Pract</u>	<u>6</u>
	15		15

TOTAL HOURS = 124

Footnotes:

¹ Students scoring below the designated score on the CMPT must take an approved math prerequisite for STAT 2300 during this semester.

² See General Education Requirements.

³ All students must fulfill the global challenges requirement to be eligible for graduation. Six credit hours of Clemson approved global challenges courses must be taken. Course transfers from other universities are not eligible. The required Nurs 3300 (Research) fulfills 3 of the 6 credit hours. Student is responsible for choosing and taking another non NURS eligible course to fulfill the remaining 3 credit hours. See global challenges approved courses.

⁴ See approved SC REACH Act courses. All undergraduate students who enter the university during summer 2021 or after must have credit for an approved social science course that also satisfies the SC REACH Act requirement. Students that have already earned credits that satisfy the SC REACH Act requirement may enroll in any approved social science course.

⁵ If this requirement is satisfied by another course in the curriculum, elective hours must be taken to cover the credit hours.

*Classes and semesters with an asterisk cannot be moved to another semester.

Notes:

- A minimum grade of a C is required in the following courses for progression to junior year clinical courses: BIOL 1030/BIOL 1050 or BIOL 1100, BIOL 2220, BIOL 2230, CH 1010, MICR 2050 or MICR 3050, NUTR 2050, STAT 2300, and the approved MATH pre-requisite if required.
- A minimum grade of C is required in all NURS nursing courses.
- To progress in junior level nursing courses, students may not have received more than 2 final course grades that are fulfilling nursing degree requirements of less than a C in the last five years. Academic forgiveness counts as an attempt.
- A minimum grade point ratio of 2.5 is required for registration in each nursing course.
- Additionally, if the student's nursing GPA drops below a 2.5, the student is not eligible to continue in nursing.
- Students may repeat one nursing course only. Withdrawing with a W from the course or applying Academic Forgiveness counts as an attempt. Students who fail a second nursing course are not eligible to continue in nursing. A student who receives concurrent D's in Pathophysiology and Pharmacology may be eligible to retake both courses concurrently with prior approval from the School of Nursing.
- Students may not exceed a maximum of two attempts, to successfully complete any NURS course. Students who are not successful on a second attempt are not eligible to continue in nursing.
- Students must pass didactic and clinical components to pass all clinical courses.

**Clemson University School of Nursing
B.S. First-Year Change of Major Track
CURRICULUM PLAN 2023-2024**

FRESHMAN YEAR

<u>Fall Semester</u> ¹		<u>Spring Semester</u>	
BIOL 1030 General Biology I	3	CH 1010 General Chemistry I	4
BIOL 1050 General Biology I Lab	1	Global Challenges Requirement ^{2,3,5}	3
COMM 1500 or COMM 2500	3	STAT 2300 Elem. Statistical Inference	3
Arts and Humanities (Non-Literature) Req ²	3	ENGL 1030 Accelerated Composition	3
Social Science Requirement ⁴	3	<u>PSYC 2010 Intro to Psychology</u>	<u>3</u>
<u>Coursework for alternate path/major</u>	<u>3</u>		<u>16</u>
	16		

SOPHOMORE YEAR

<u>Fall Semester</u> *		<u>Spring Semester</u>	
BIOL 2220 Hum Anat and Phys I	4	*BIOL 2230 Human Anat and Phys II	4
MICR 2050 Intro to Microbiology	4	Arts and Humanities (Literature) Req ²	3
NUTR 2050 Nutrition for Nursing Prof	3	*NURS 3100 Health Assessment	3
<u>NURS 1400 Comp Appl. In Health Care</u>	<u>3</u>	*NURS 3200 Professionalism in Nursing	3
	14	<u>*NURS 3110 Health Promotion</u>	<u>2</u>
			15

JUNIOR YEAR

<u>Fall Semester</u> *		<u>Spring Semester</u> *	
ENGL 3150 Scientific Writing <i>or</i>		NURS 3030 Med-Surg II: Nurs of Adults	7
ENGL 3140 Tech <i>or</i> ENGL 3040 Business	3	NURS 3050 Psychosocial Nurs	3
NURS 3040 Pathophysiology	3	NURS 3300 Research in Nurs ^{2,3}	3
NURS 3230 Gerontology Nurs	2	<u>NURS 3330 Health Care Genetics</u>	<u>3</u>
NURS 3120 Med-Surg I: Found of Nurs	4		16
<u>NURS 3400 Pharmacotherapeutic Nurs</u>	<u>3</u>		
	15		

SENIOR YEAR

<u>Summer Semester</u> *		<u>Fall Semester</u> *	
NURS 4010 Mental Health Nurs	5	NURS 4030 Med-Surg 3: Complex Nurs Adults	5
NURS 4110 Nurs of Children	5	NURS 4150 Community Hlth Nurs	4
<u>NURS 4120 Nurs Women & Fam</u>	<u>5</u>	<u>NURS 4100 Leadership Mgmt. & Nurs Care Pract</u>	<u>6</u>
	15		15

TOTAL HOURS = 124

Footnotes:

- ¹ Students scoring below the designated score on the CMPT must take an approved math prerequisite for STAT 2300 during this semester.
- ² See General Education Requirements.
- ³ All students must fulfill the global challenges requirement to be eligible for graduation. Six credit hours of Clemson approved global challenges courses must be taken. Course transfers from other universities are not eligible. The required Nurs 3300 (Research) fulfills 3 of the 6 credit hours. Student is responsible for choosing and taking another non NURS eligible course to fulfill the remaining 3 credit hours. See global challenges approved courses.
- ⁴ See approved SC REACH Act courses. All undergraduate students who enter the university during summer 2021 or after must have credit for an approved social science course that also satisfies the SC REACH Act requirement. Students that have already earned credits that satisfy the SC REACH Act requirement may enroll in any approved social science course.
- ⁵ If this requirement is satisfied by another course in the curriculum, elective hours must be taken to cover the credit hours.
- *Classes and semesters with an asterisk cannot be moved to another semester.

Notes:

- A minimum grade of a C is required in the following courses for progression to junior year clinical courses: BIOL 1030/BIOL 1050 or BIOL 1100, BIOL 2220, BIOL 2230, CH 1010, MICR 2050 or MICR 3050, NUTR 2050, STAT 2300, and the approved MATH pre-requisite if required.
- A minimum grade of C is required in all NURS nursing courses.
- To progress in junior level nursing courses, students may not have received more than 2 final course grades that are fulfilling nursing degree requirements of less than a C in the last five years. Academic forgiveness counts as an attempt.
- A minimum grade point ratio of 2.5 is required for registration in each nursing course.
- Additionally, if the student's nursing GPA drops below a 2.5, the student is not eligible to continue in nursing.
- Students may repeat one nursing course only. Withdrawing with a W from the course or applying Academic Forgiveness counts as an attempt. Students who fail a second nursing course are not eligible to continue in nursing. A student who receives concurrent D's in Pathophysiology and Pharmacology may be eligible to retake both courses concurrently with prior approval from the School of Nursing.
- Students may not exceed a maximum of two attempts, to successfully complete any NURS course. Students who are not successful on a second attempt are not eligible to continue in nursing.
- Students must pass didactic and clinical components to pass all clinical courses.

Clemson University School of Nursing
B.S. Upper-Class Change of Major & Transfer Track
CURRICULUM PLAN 2023-2024

FRESHMAN YEAR

Fall Semester¹		Spring Semester	
BIOL 1030 General Biology I	3	CH 1010 General Chemistry I	4
BIOL 1050 General Biology I Lab	1	ENGL 1030 Accelerated Composition	3
COMM 1500 or COMM 2500	3	STAT 2300 Elem. Statistical Inference	3
Arts and Humanities (Non-Literature) Req ²	3	PSYC 2010 Intro to Psychology	3
Social Science Requirement ⁴	3	<u>Elective (not required for major)</u>	<u>3</u>
<u>Elective</u>	<u>3</u>		<u>16</u>
	16		

SOPHOMORE YEAR

Fall Semester		Spring Semester	
*BIOL 2220 Hum Anat and Phys I	4	*BIOL 2230 Human Anat and Phys II	4
*MICR 2050 Intro to Microbiology <i>or</i>		Global Challenges Requirement ^{2,3,5}	3
MICR 3050 General Microbiology	4	<u>Electives (not required for major)</u>	<u>8</u>
Arts and Humanities (Literature) Req ² .	3		<u>15</u>
<u>Elective (not required for major)</u>	<u>4</u>		
	15		

JUNIOR YEAR

Fall Semester*		Spring Semester*	
NURS 3100 Health Assessment	3	NURS 3230 Gerontology Nurs	2
NURS 1400 Comp Appl. In Health Care	3	NURS 3120 Med-Surg I: Found of Nurs	4
NUTR 2050 Nutrition for Nursing Prof.	3	NURS 3400 Pharmacotherapeutic Nurs	3
NURS 3200 Professionalism in Nursing	3	NURS 3040 Pathophysiology	3
NURS 3110 Health Promotion	2	ENGL 3150 Scientific Writing <i>or</i>	
<u>Elective</u>	<u>1</u>	<u>ENGL 3140 Tech <i>or</i> ENGL 3040 Business</u>	<u>3</u>
	15		15

SENIOR YEAR

Fall Semester*		Spring Semester*	
NURS 3030 Med-Surg II: Nurs of Adults	7	NURS 4010 Mental Health Nurs	5
NURS 3050 Psychosocial Nurs	3	NURS 4110 Nurs of Children	5
NURS 3330 Health Care Genetics	3	<u>NURS 4120 Nurs Women & Fam</u>	<u>5</u>
<u>NURS 3300 Research in Nurs³</u>	<u>3</u>		<u>15</u>
	16		
Fall Semester/Extra Semester*			
NURS 4030 Med-Surg 3: Complex Nurs Adults	5		
NURS 4150 Community Hlth Nurs	4		
<u>NURS 4100 Leadership Mgmt. & Nurs Care Pract</u>	<u>6</u>		
	15	TOTAL HOURS = 124	

Footnotes:

- ¹ Students scoring below the designated score on the CMPT must take an approved math prerequisite for STAT 2300 during this semester.
 - ² See General Education Requirements.
 - ³ All students must fulfill the global challenges requirement to be eligible for graduation. Six credit hours of Clemson approved global challenges courses must be taken. Course transfers from other universities are not eligible. The required Nurs 3300 (Research) fulfills 3 of the 6 credit hours. Student is responsible for choosing and taking another non NURS eligible course to fulfill the remaining 3 credit hours. See approved Global Challenges Courses.
 - ⁴ See approved SC REACH Act courses. All undergraduate students who enter the university during summer 2021 or after must have credit for an approved social science course that also satisfies the SC REACH Act requirement. Students that have already earned credits that satisfy the SC REACH Act requirement may enroll in any approved social science course.
 - ⁵ If this requirement is satisfied by another course in the curriculum, elective hours must be taken to cover the credit hours.
- *Classes and semesters with an asterisk cannot be moved to another semester.

Notes:

- A minimum grade of a C is required in the following courses for progression to junior year clinical courses: BIOL 1030/BIOL 1050 or BIOL 1100, BIOL 2220, BIOL 2230, CH 1010, MICR 2050 or MICR 3050, NUTR 2050, STAT 2300, and the approved MATH pre-requisite if required.
- A minimum grade of C is required in all NURS nursing courses.
- To progress in junior level nursing courses, students may not have received more than 2 final course grades that are fulfilling nursing degree requirements of less than a C in the last five years. Academic forgiveness counts as an attempt.
- A minimum grade point ratio of 2.5 is required for registration in each nursing course.
- Additionally, if the student's nursing GPA drops below a 2.5, the student is not eligible to continue in nursing.
- Students may repeat one nursing course only. Withdrawing with a W from the course or applying Academic Forgiveness counts as an attempt. Students who fail a second nursing course are not eligible to continue in nursing. A student who receives concurrent D's in Pathophysiology and Pharmacology may be eligible to retake both courses concurrently with prior approval from the School of Nursing.
- Students may not exceed a maximum of two attempts, to successfully complete any NURS course. Students who are not successful on a second attempt are not eligible to continue in nursing.
- Students must pass didactic and clinical components to pass all clinical courses.

**Clemson University School of Nursing
B.S. Accelerated Second Degree (ASD) Track
CURRICULUM PLAN 2023-2024**

Program Description

The Accelerated Second Degree (ASD) Nursing track is designed for students who have already earned a bachelor's degree from a regionally or nationally accredited college or university. The 16-month track consists of four, full-time consecutive semesters (fall, spring, summer, and fall) and leads to a Bachelor of Science degree with a major in Nursing.

All General Education and prerequisite courses must be successfully completed prior to the start of classes.

BIOL 1030 General Biology I	3	ENGL 1030 Accelerated Composition	3
BIOL 1050 General Biology I Lab	1	ENGL Scientific, Technical, or Business Writing ²	3
CH 1010 General Chemistry I	4	COMM 1500 or COMM 2500	3
STAT 2300 Elem. Statistical Inference	3	Arts and Humanities (Non-Literature) Req ⁴	2

GENERAL EDUCATION¹

BIOL 2220 Hum Anat. and Phys I	4	Global Challenges Req ³	3
BIOL 2230 Human Anat. and Phys II	4	*NURS 1020 Univ Success Skills ²	2
MICR 2050 Intro to Microbiology	4	*NURS 1400 Comp Appl. In Health Care ²	3
PSYC 2010 Intro to Psychology	3	*NUTR 2050 Nutrition for Nursing Prof ²	3
SOC 2010 Intro to Sociology	3	*NURS 3300 Research in Nurs ^{2,5}	3

JUNIOR YEAR

<u>Fall Semester*</u>		<u>Spring Semester*</u>	
NURS 3040 Pathophysiology	3	NURS 3030 Med-Surg II: Nurs of Adults	7
NURS 3400 Pharmacotherapeutic Nurs	3	NURS 3050 Psychosocial Nurs	3
NURS 3200 Professionalism in Nursing	3	NURS 3230 Gerontology	2
NURS 3100 Health Assessment	3	<u>NURS 3330 Health Care Genetics</u>	<u>3</u>
<u>NURS 3120 Med-Surg I: Found of Nurs</u>	<u>4</u>		<u>15</u>
	16		

SENIOR YEAR

<u>Summer Semester*</u>		<u>Fall Semester*</u>	
NURS 4010 Mental Health Nurs	5	NURS 4030 Med-Surg 3: Complex Nurs Adults	5
NURS 4110 Nurs of Children	5	NURS 4140 Community Hlth Nurs & Hlth Promotion	5
<u>NURS 4120 Nurs Women & Fam</u>	<u>5</u>	<u>NURS 4100 Leadership Mgmt. & Nurs Care Pract.</u>	<u>6</u>
	15		16

TOTAL HOURS = 124

Footnotes:

¹ See General Education Requirements.

² An alternate course may be substituted. A course substitution form must be submitted.

³ All students must fulfill the global challenges requirement to be eligible for graduation. Three credit hours of Clemson approved global challenges courses must be taken. Course transfers from other universities are not eligible.

⁴ If this requirement is satisfied by another course in the curriculum, elective hours must be taken to cover the credit hours.

⁵ NURS 3300 can count towards your global challenge requirement, if taken at Clemson University. If a student subs NURS 3300 from another institution, the student must take another approved eligible global challenges course. See approved global challenges courses.

**Notes*

- Students may not receive more than 2 final course grades that are fulfilling nursing degree requirements of less than a C in the last five years. Academic forgiveness counts as an attempt.
- A minimum grade point ratio of 2.5 is required for registration in each nursing course.
- If a student's nursing GPA drops below a 2.5, the student is not eligible to continue in nursing.
- Students may repeat one nursing course only. Withdrawing with a W from the course or applying Academic Forgiveness counts as an attempt. Students who fail a second nursing course are not eligible to continue in nursing. A student who receives concurrent D's in Pathophysiology and Pharmacology may be eligible to retake both courses concurrently with prior approval from the School of Nursing.
- Students may not exceed a maximum of two attempts, to successfully complete any NURS course. Students who are not successful on a second attempt are not eligible to continue in nursing.
- Students must pass didactic and clinical components to pass all clinical courses.

RNBS Curriculum Information

RNBS Prerequisite Courses (TOTAL = 62 Credits)

Prerequisite Course	Credits*	Equivalent Clemson Course(s) Needed
Communication & Public Speaking	6	ENGL 1030 Accelerated Composition COMM 1500 or COMM 2500 Public Speaking
Mathematical Sciences	3	STAT 2300 Statistics
Physical or Biological Sciences	20	BIOL 2220 Anatomy & Physiology I (4) BIOL 2230 Anatomy & Physiology II (4) MICR 2050 or MICR 3050 Microbiology (4) <i>AND 2 of the following 4:</i> BIOL 1030/1050 General Biology I (4) BIOL 1040/1060 General Biology II (4) CH 1010 General Chemistry I (4) CH 1020 General Chemistry II (4)
Global Challenges**	6	Select from list of approved courses
Arts & Humanities - Literature	3	ENGL 2000-level, select from American, British, World Lit, etc.
Social Sciences	6	PSYC 2010 Introduction to Psychology (3) SOC 2010 Introduction to Sociology (3)
Nutrition	3	NUTR 3020 Principles of Nutrition (3)
Science & Technology	3	CPSC 1200 Computer Applications (3)
Electives	12	College transferable courses

*Only courses in which a grade of "C" or better is earned are considered for transfer credit.

** All students must fulfill the global challenges requirement to be eligible for graduation. Six credit hours of Clemson approved global challenges courses must be taken. Course transfers from other universities are not eligible. The required Nurs 3300 (Research) fulfills 3 of the 6 credit hours. Student is responsible for choosing and taking another non NURS eligible course to fulfill the remaining 3 credit hours. See approved global challenges courses.

RNBS Required Courses (TOTAL = 32 Credits)

Course Title	Course Credits
NURS 3330 Healthcare Genetics	3 (3,0)
NURS 3300 Research in Nursing*	3 (3,0)
NURS 3070 Family Nursing in the Community	4 (3,2)
ENGL 3150 Scientific Writing	3 (3,0)
NURS 4060 Issues in Professionalism	3 (3,0)
NURS 4250 Community Health Nursing	4 (3,2)
NURS 4050 Leadership and Management in Nursing	3 (2,2)
NURS 3190 Health Assessment for RNs	3 (3,0)
NURS Electives	3 (3,0)
<ul style="list-style-type: none"> • Varies, can be undergraduate or graduate-level courses • Students must have 3.0 GPA or higher to enroll in graduate-level course • Graduate courses may not be offered in an online only format • Independent study credit may be used to satisfy this requirement 	

*Nurs 3300 fulfills 3 of the required 6 global challenges credit hours. Student is responsible for choosing and taking another non NURS eligible course to fulfill the remaining 3 credit hours. See approved global challenges courses.

RNBS Exemption Credit for NURS Courses

After completion of NURS 4060: Issues in Professionalism with a B or better, students receive credit of 31 hours for course work completed during their nursing diploma or associate degree program. Credit is awarded for the following CU Nursing courses:

Course Title	Course Credit
NURS 3030, Nursing of Adults	7
NURS 3120, Therapeutic Nursing Interventions	4
NURS 4010, Mental Health Nursing	5
NURS 4030, Complex Nursing of Adults	5
NURS 4110, Nursing Care of Children	5
NURS 4120, Nursing Care of the Childbearing Family	5

RNBS Curriculum Progression - Fall Start**

Fall	NURS 3040	Pathophysiology 3(3,0)
	ENGL 3150	Scientific Writing & Communication 3(3,0)
	NURS 4060	Issues in Professionalism 3(3,0)
Spring	NURS 3070	Family Nursing in the Community 4(3,2) <i>7 weeks</i>
	NURS 4250	Community Health Nursing 4(3,2) <i>7 weeks</i>
	NURS 3330	Healthcare Genetics 3(3,0)
	NURS 3190	Health Assessment for RNs 3(3,0)
Summer*	NURS 4050	Leadership and Management 3(2,2)
	NURS 3300*	Research in Nursing 3(3,0)
	NURS Electives	(Undergraduate and Graduate options)

*Summer courses are only offered during summer semester.

**Student may choose when to take their 2nd (non NURS) global challenges course in their curriculum. NURS 3300 counts as three of the six global challenges credit hours. See approved global challenges courses. The remaining three credit hours must be a non NURS class.

RNBS Curriculum Progression – Spring Start**

Spring	NURS 3040	Pathophysiology 3(3,0)
	ENGL 3150	Scientific Writing & Communication 3(3,0)
	NURS 4060	Issues in Professionalism 3(3,0)
Summer*	NURS 4050	Leadership and Management 3(2,2)
	NURS 3300*	Research in Nursing 3(3,0)
	NURS Electives	(Undergraduate and Graduate options)
Fall	NURS 3070	Family Nursing in the Community 4(3,2) <i>7 weeks</i>
	NURS 4250	Community Health Nursing 4(3,2) <i>7 weeks</i>
	NURS 3330	Healthcare Genetics 3(3,0)
	NURS 3190	Health Assessment for RNs 3(3,0)

*Summer courses are only offered during summer semester.

**Student may choose when to take their 2nd (non NURS) global challenges course in their curriculum. NURS 3300 counts as three of the six global challenges credit hours. See approved global challenges courses. The remaining three credit hours must be a non NURS class.

Potential Graduate Courses for RNBS Students*

NURS 8010 – Advanced Family and Community (3 credits, Spring only course)

NURS 8040 – Knowledge Development in Nursing (2 credits, Fall only course)

NURS 8090 – Pathophysiology (3 credits, Fall and Summer course)

NURS 8270 – Foundations of Nursing Education (3 credits, Spring only course)

NURS 8500 – Nursing Informatics (3 credits, Spring only course)

*Not all courses are offered each academic year. Enrollment depends on space available.

RNBS Transfer Credit Evaluation

- When students are accepted into the RN-BS Program, they are responsible to ensure that all courses are officially evaluated for transfer. Students will receive a Transfer Credit Evaluation form from University Admissions when they are officially accepted.
- For any course not listed on the Transfer Course Equivalency List (TCEL), a designated faculty member from the course's home department must evaluate the course for transfer credit. In this case, the student will be required to provide a course description from the sending institution. The most efficient way to get courses evaluated is by attending a Transfer Orientation Session where all Department Heads are present.
- When all courses are approved for transfer, the transfer evaluation will be reviewed by the RNBS Student Program Coordinator. In the case where a course does not transfer, the student will be required to take the course to meet degree requirements.
- All students must complete 32 credit hours of study at Clemson University in order to meet residency requirements.
- Students are responsible for ensuring that all course work in their curriculum plan is completed for graduation.

RNBS Residency Requirement

Upper division nursing courses must be taken at Clemson University in order to meet the university's Residency Requirement. These courses cannot be challenged on the basis of examination or work experience. Although many RN's have years of experience that will support their knowledge base, these courses are designed to provide a theoretical and experiential framework for professional practice and will serve as a foundation for courses in the graduate program.

RNBS Clinical Course Requirement

Only registered nurses may enroll in clinical courses offered in the RNBS completion program.

RNBS Independent Study Guidelines (NURS 4990)

1. Prior to registration for NURS 4990, the student must seek approval from a faculty member who agrees to guide the experience.
2. Student will formulate objectives, plan of study, and evaluation methods in consultation with the faculty member.
3. A copy of the above will be submitted to the Director of the School of Nursing within three weeks after the start of the semester.
4. A maximum of 3 hours of NURS 4990 may be taken

RNBS Special Topics Course (NURS 3000)

Nursing 3000: Special Topics Course. To be offered at various times. Courses include content regarding specific interests. These courses are elective courses and are not mandated by the curriculum for graduation.

RNBS Summer Semester

Selected nursing courses may be offered in summer school contingent upon availability of funds, adequate student enrollment and faculty availability. However, the School of Nursing does not guarantee that any nursing course will be scheduled during the summer sessions. Information about summer offerings will be distributed in advance of on-line registration.

RNBS Policies Regarding Progression

1. A minimum grade of "C" or better is required in science and nursing courses.
2. A minimum grade point ratio of 2.5 must be achieved in all required nursing courses for progression to the next level. If the student's nursing GPA drops below 2.5, the student is not eligible to continue in nursing.
3. A minimum grade point ratio of 2.5 is required for registration in each nursing course.
4. Students may not exceed a maximum of two attempts, to complete successfully any NURS course. Students who are not successful on a second attempt are not eligible to continue in nursing.
5. Students may repeat one nursing course only. Withdrawing with a *W* from the course or applying Academic Forgiveness counts as an attempt. Students who fail a second nursing course are not eligible to continue in nursing.
6. Students must pass didactic and clinical components to pass all clinical courses.

Bachelor of Science in Nursing Course Descriptions

Please see Undergraduate Announcements for Pre/Co-requisites

Nursing 1020 Nursing Success Skills 2(2,0) Introduction to a variety of topics critical to a student's success as a Nursing major and future professional. Topics include time management, goal setting, test taking, campus and nursing department resources and policies, critical thinking, and diversity. Students have the opportunity to discover and practice many procedures, techniques, and tips, as well as apply principles learned to their future career in nursing.

Nursing 1400: Computer applications in Health Care 3(3,0) Designed to introduce students to the application of computers in the delivery of health care. Covers existing healthcare applications and forecasts future needs. Multiple computer systems will be discussed. Nursing majors will be given enrollment priority.

Nursing 1980: Creative Inquiry – Nursing 1-4 (1-4, 0) In consultation with and under the direction of a faculty member, students pursue scholarly activities individually or in teams. These creative inquiry projects may be interdisciplinary. Arrangements with mentors must be established prior to registration. May be repeated for a maximum of eight credits.

Nursing 2980: Creative Inquiry – Nursing 1-4 (1-4, 0) In consultation with and under the direction of a faculty member, students pursue scholarly activities individually or in teams. These creative inquiry projects may be interdisciplinary. Arrangements with mentors must be established prior to registration. May be repeated for a maximum of eight credits.

Nursing 3000: Seminar in Health Care Topics 1-4(1-4,0-9) Individualized in-depth study in a selected health care area; may have a clinical component and/ or special projects. Open to non- Nursing majors. May be repeated for a maximum of six credits.

Nursing 3030: Med-Surg II: Nursing of Adults 7(3,12) Incorporates theoretical and empirical knowledge from the physical and social sciences. Uses critical thinking to provide holistic, safe individualized nursing care to adults, including health promotion, maintenance, restoration and health teaching.

Nursing 3040: Pathophysiology for Health-Care Professionals 3(3,0) Focus is on disease mechanisms and recognition of the manifestations of these mechanisms in body systems. Discussion will also include pharmacologic and mechanical interventions commonly associated with specific disease processes and application to patient-care situations.

Nursing 3050: Psychosocial Nursing 3(3,0) Course uses a life span approach to examine psychosocial, developmental, family, and cultural factors that influence individuals from diverse populations and their families in the promotion, maintenance, and restoration of health. The use of the nursing process, critical thinking, therapeutic communication, and psychosocial nursing interventions is explored.

Nursing 3070: Family Nursing in the Community 4(3,2) Bridge course for registered nurse students which focuses on nursing care of families across the lifespan in the context of the community. Major emphasis is on practice activities to assist individuals in achieving or maintaining wellness in the family, home, and community environments.

Nursing 3100: Health Assessment 3(2,3) Introduces concepts of health, wellness, and illness. Focuses on physical, psychosocial, and cultural assessment for the well adult client with variations across the life span. Includes interviewing techniques.

Nursing 3110: Health Promotion Across the Lifespan 2(2,0) Focuses on health promotion and

illness prevention activities across the life span for individual and families in the community. Major emphasis is on nursing's role in the acquisition and maintenance of health as well as the identification and modification of health risk factors.

Nursing 3120: Foundations of Nursing 4(2,6) Focus on therapeutic nursing interventions, including selected psychomotor skills, communication skills, and teaching/learning.

Nursing 3170: Development of the Nursing Profession 3 (3,0) Explores the evolution of nursing as a profession, the social and technological factors and challenges, struggles and accomplishments of past nursing leaders. Includes strategies for effecting change based on experiences of the past.

Nursing 3180: Multidisciplinary Approach to End-of-Life Care 3 (3,0) Integrates principles of care to increase comfort at the end of life, presented within a framework which encompasses the physical, psychosocial, and spiritual dimensions of an individual. Coursework also includes ethical and legal issues related to advance directives, reimbursement, and regulatory topics.

Nursing 3190: Health Assessment for RNs 3(3,0) Demonstrate health assessment of well or ill individuals. Emphasis is on data collection as a basis for critical thinking in nursing practice.

Nursing 3200: Professionalism in Nursing 3(3,0) Application of critical thinking skills in the professional nursing roles in multidisciplinary approaches to health care. Analysis of the historical development of modern nursing. Examination of issues of nursing care to diverse populations within context of ethical and professional standards.

Nursing 3230: Gerontology Nursing 2(2,0) Introduction of theories of aging. Focus on complex health care issues of aging and chronic care including promotion, maintenance and restoration of health of the elderly. Concepts from the sciences address physiological, psychological, and sociological issues of aging and chronic illness.

Nursing H3280: Honors Seminar I 1 (1,0) Serves as the foundation for senior honors projects. Students identify a topic of interest, a faculty member, and team members for their honors project and begin to review the literature in their areas of interest. To be taken Pass/Fail only.

Nursing 3300, H3300: Research in Nursing 3(3,0) Introduction to conceptual frameworks, models, and theories related to nursing. Analysis of reported research in nursing and related disciplines. Ethical, moral, and legal issues are discussed in relation to nursing research.

Nursing 3330: Health Care Genetics 3 (3,0) Focus on the new genetics and the implications for health care professionals. Discussion includes applications of the evolving genetics technology and services to changing life stages. Issues of ethics relevant to various genetic disorders is also addressed.

Nursing 3340: Integrative Healing: Complementary/Alternative Healthcare 3 (3,0) Introduction to healing practices that are complementary with/and alternative (C/A) for conventional Western medicine. Includes exploration of research, principles, techniques, and methods of C/A used in health and healing.

Nursing 3400: Pharmacotherapeutic Nursing Interventions 3(3,0) Focus is on integration of nursing process with pharmacotherapeutics, administration, monitoring, and related client education. Includes major drug classifications, indications for use, side effects, interactions, routes of administration, usual dosages and contraindications.

Nursing 3980: Creative Inquiry – Nursing 1-4 (1-4, 0) In consultation with and under the direction of a faculty member, students pursue scholarly activities individually or in teams.

These creative inquiry projects may be interdisciplinary. Arrangements with mentors must be established prior to registration. May be repeated for a maximum of eight credits.

Nursing 4010: Mental Health Nursing 5(3,6) Application of theories and the nursing process to identify, implement, and evaluate nursing interventions for the care of clients with psychiatric disorders.

Nursing 4030: Med-Surg III: Complex Nursing of Adults 5(3,6) Focus on the biological, psychological, philosophical, and socio-cultural influences on complex health problems related to acute and traumatic conditions. Emphasis on the concepts of circulation, oxygenation, homeostasis, and compensation in acutely ill adults.

Nursing 4050: Leadership and Management in Nursing 3(2,2) Focus on the role of the professional nurse in managing nursing care. Theories and research related to leadership, power, management, organizations, regulation, and ethics are discussed. Directed laboratory experiences are provided.

Nursing 4060: Issues in Professionalism 3(3,0) Analysis of the development of professional nursing. Consideration of educational issues, legal and economic issues, health policy, leadership, cultural variations, and the influence of values in ethical decisions and nursing practice.

Nursing 4100: Leadership, Management, and Nursing Care Practicum 6 (3,9) Focus is the role of the professional nurse in practicing and managing nursing care. Theories and research related to clinical practice, leadership, power, management, organizations, regulation, ethics, and licensure preparation are discussed. Direct lab experiences are provided under preceptor supervision.

Nursing 4110: Nursing Care of Children 5(3,6) Focuses on child health problems and health maintenance. Emphasis is placed on biological, pathophysiological, psychological, and sociocultural concepts related to nursing care of children with acute, critical, and chronic illnesses. Includes strategies for alleviation of illness, restoration of wellness, promotion and maintenance of health, growth, and development.

Nursing 4120: Nursing Care of Women and Their Families 5(3,6) Focus on health care of women and their families. Emphasis is placed on biological, psychological, and socio-cultural concepts. Identification of appropriate nursing strategies that enhance individual capacity to achieve or maintain wellness in the family, home, community, and hospital environment.

Nursing 4140: Community Health Nursing and Health Promotion 5(3, 6) Focuses on community health nursing of families and community groups, including community assessment, screening, health promotion and health education, with emphasis on the health of clients and population groups in homes, schools, industries and other community agencies and organizations.

Nursing 4150: Community Health Nursing 4(2,6) Consideration of health promotion activities for family and community groups with emphasis on community assessment, screening, and health teaching/counseling. Practice activities will be related to health promotion in population groups and nursing care of homebound clients. Laboratory settings include homes, schools, industries, and other community organizations.

Nursing H4200: Senior Honors I 2 (2,0) Students will develop a proposal for major thesis, direct study project, or research project under the guidance of a faculty preceptor.

Nursing 4250: Community Nursing 4(3,2) Consideration of health promotion activities for groups within the community with emphasis on community assessment, screening, and

health teaching/counseling. Practice activities are related to health promotion in population groups and nursing care of homebound clients. Laboratory settings include homes, schools, industries, public health department, and other community agencies.

Nursing H4280: Senior Honors II 2 (2,0) Students will implement a proposal for a major directed study project or research thesis under the guidance of a faculty preceptor.

Nursing 4980: Creative Inquiry – Nursing 1-4 (1-4, 0) In consultation with and under the direction of a faculty member, students pursue scholarly activities individually or in teams. These creative inquiry projects may be interdisciplinary. Arrangements with mentors must be established prior to registration. May be repeated for a maximum of eight credits.

Nursing 4990: Independent Study 1-4 (1-4, 0-9) In-depth study in an area of special interest in Nursing. Students develop specific objectives with a faculty member with expertise in the area of interest. May be repeated for a maximum of six credits.

Departmental Honors Program

The School of Nursing Departmental Honors Program provides nursing students with an opportunity to participate in a faculty-led, advanced, independent, and in-depth research experience related to a clinical problem or professional issue in nursing. The research experience is overseen by a faculty preceptor with expertise in the chosen research area. To qualify for Nursing Departmental Honors, nursing students must meet Clemson University Honors College qualifications and take a minimum of one honors course per semester. To obtain Departmental Honors in Nursing, students must complete four consecutive semesters of departmental honors designated nursing courses (NURS H3280, H3300, H4200, and H4280) beginning fall of the junior 1 semester. Applications for Nursing Departmental Honors are accepted during the spring semester only (during the Sophomore II year). These applications are reviewed and approved by the Nursing Departmental Honors advisor(s). Once approved by Nursing Departmental Honors advisor(s), students must complete the application by applying to the Clemson University Honors College for final approval. The School of Nursing's Departmental Honors Advisors, Dr. Janice Withycombe (Edwards Hall) and Dr. Tracy Lowe (School of Nursing, Greenville) provide academic counseling and pre-registration advisement for all Nursing Departmental Honors students until graduation.

Essential Functions for Nursing Students

ISSUE	STANDARD	EXAMPLES
Critical Thinking	Critical thinking ability sufficient for clinical judgment.	Identify cause-effect relationships; accurately calculate medication dosages. Assemble equipment in sequence for safe use; maintain aseptic environment.
Interpersonal	Interpersonal abilities sufficient to interact with individuals/groups from various social, emotional, cultural, & intellectual backgrounds.	Establish and maintain supportive relationships with patients and other health care providers.
Communication	Communication abilities sufficient for interaction in verbal and written form.	Count aloud and document sponges, instruments, sharps, etc.
Mobility	Physical abilities sufficient to move from room to room and maneuver in small spaces.	Ability to lift, position, push, or transfer patients. Move around in treatment areas; administer CPR. Push/pull or move/lift equipment/supplies (up to 25 pounds). Ability to reach, stoop, bend, kneel, and crouch. Prolonged standing/walking.
Motor Skills	Gross & fine motor abilities sufficient to provide safe & effective care.	Calibrate and use equipment; position patients; assist patients in and out of bed. Use coordinated finger and hand movements.
Hearing	Auditory ability sufficient to monitor and assess health.	Hears monitor alarm, emergency signals, auscultatory sounds, cries for help, voices under protective garb.
Visual	Near/far visual acuity. Sufficient for assessment, & implementation.	Observe patients' responses; reads patients' care plans, consents; gauges, labels, digital printouts, & computer screens.
Tactile	Tactile ability sufficient for assessment of physical health status.	Performs palpation (take a pulse & perceive temperature) &/or those related to therapeutic intervention, e.g. catheter
Smell	Olfactory senses sufficient for maintaining patient safety	Distinguish smells that are contributory to assessing and/or maintaining patient's health status, e.g. smell fire.
Self-Care	Ability to present professional appearance, maintain own health and not place patients in jeopardy.	Implement universal precautions. Use good personal hygiene
Environment	Ability to work in various health care settings.	Work in environment with temperature changes, frequent contact with liquids, sufficient noise to cause distraction, and other hazards. Implement universal precautions with variations.

Check list of Essential Functions I have reviewed and understand the minimum essential functions necessary for nursing. Demonstration of one or more of these core standards may be required. (**please specify*)

I can meet these requirements.

I do not meet these requirements.*

I am capable of meeting these requirements with the following accommodations:*

**Critical Thinking,
Interpersonal &
Communication
Mobility &
Motor Skills
Hearing & Visual
Tactile & Smell
Self-Care
Environment**

*Indicates awareness of applicant to make appointment with Disability Services at 656-6848 (voice/TTY) if accommodations are required to meet Essential Requirements of Nursing Students. I, the undersigned, do hereby testify that I have read and understand the Essential Functions for Nursing Students required for admission to Nursing and that the above statements, as indicated, are true.

Student's Signature _____ Date _____ Telephone Number _____



Kaplan is a series of secure online tests designed to evaluate the knowledge of students in a basic nursing curriculum leading to RN licensure. The results enable nursing faculty to identify knowledge deficits in specific content areas, so that early interventions can be implemented to positively influence student outcomes. The School of Nursing requires that all pre-licensure baccalaureate students demonstrate content mastery in the discipline. The School of Nursing Pre-licensure Baccalaureate Program utilizes the Kaplan Program and the Kaplan NCLEX-RN live review. Formative testing occurs throughout the program at prescribed intervals. Summative testing occurs during the Senior 2 semester. Bonus Points: The goal of providing incentive bonus points is to enhance student performance on Kaplan tests. It is at the discretion of the faculty to provide up to 3 exam bonus points for students that score within the minimal benchmark on Kaplan exams. Please refer to your course syllabi or reach out to your faculty for more details.

SECTION III: ADVISING, REGISTRATION, POLICIES, & PROCEDURES

School of Nursing Policies Regarding Progression

(See also School of Nursing Student Acknowledgement of Policies and Expectations)

All nursing (NURS) courses must be taken at Clemson University

- A minimum grade of a C is required in the following courses for progression to junior year clinical courses: BIOL 1030/BIOL 1050 or BIOL 1100, BIOL 2220, BIOL 2230, CH 1010, MICR 2050 or MICR 3050, NUTR 2050, STAT 2300, and the approved MATH pre-requisite if required.
- A minimum grade of C is required in all NURS nursing courses.
- To progress in junior level nursing courses, students may not have received more than 2 final course grades that are fulfilling nursing degree requirements of less than a C in the last five years. Academic forgiveness counts as an attempt.
- A minimum grade point ratio of 2.5 is required for registration in each nursing course.
- Additionally, if the student's nursing GPA drops below a 2.5, the student is not eligible to continue in nursing.
- Students may repeat one nursing course only. Withdrawing with a W from the course or applying Academic Forgiveness counts as an attempt. Students who fail a second nursing course are not eligible to continue in nursing. A student who receives concurrent D's in Pathophysiology and Pharmacology may be eligible to retake both courses concurrently with prior approval from the School of Nursing.
- Students may not exceed a maximum of two attempts, to successfully complete any NURS course. Students who are not successful on a second attempt are not eligible to continue in nursing.
- Students must pass didactic and clinical components to pass all clinical courses.

Course Space Priority

Students whose progress through the curriculum is delayed for any reason, including course withdrawal, course failure, or medical withdrawal will be admitted to successive clinical courses as space permits. In all cases, first-time enrollees will be given priority over students who are returning or repeating a course.

Validation of Prior Coursework

Students who have been out of clinical courses for one year or more will be required to demonstrate competency in all previously acquired nursing knowledge and clinical skills.

Student Records and Confidentiality

Academic records for purposes of advising are maintained in the Office of Student Services. The School of Nursing will not release information to a third party without the written consent of the student.

Advising

1. All students will be informed of their faculty advisor upon entering the junior year of nursing. Freshman and Sophomores are advised by professional advisors. (see page 48 regarding CBSHS advising.)
2. Faculty advisors will contact their advisees by email near the registration time of each semester in order to set up a meeting time to discuss the student's progress. Group advising will be completed prior individual faculty advising.
3. Students are required to meet with their advisors at the arranged time in order to discuss their progress and classes they plan to take.
4. Any student not meeting with the advisor at the arranged time will not be provided with the registration PIN number, and therefore will not be eligible to register for classes.
5. During advisement, students will be approved to take only courses for which they have had the specified pre-requisites. Students will not add courses for which they are not approved. **Students will not receive credit for courses taken out of sequence. Any student identified taking a course out of sequence will be dropped from the course.**
6. In the event that a faculty advisor does not contact advisees or does not attend the arranged meetings, students should contact the Director Undergraduate Programs.

Grading Policies for Undergraduate Nursing Courses

The following policies have been implemented by the School of Nursing Faculty:

1. Grade Scale:
 - A = 90-100
 - B = 80-89
 - C = 75-79
 - D = 70-74
 - F = Below 70
2. Nursing course grades are determined by the numerical score earned in the classroom and Pass/Fail in the clinical laboratory. In order to pass the course, a student must earn a minimum of 75 in the class and a pass (P) in the clinical laboratory.
3. Rounding up: The School of Nursing requires that students achieve a minimum grade of 75 before any grade can be "rounded up." For example, **74.9 does not round up to 75**. After the student has achieved a minimum grade of 75, the choice to round up lies with the faculty member in charge of the course.
4. Regular and punctual attendance at all clinical labs is required. Unexcused absences from clinical labs will result in course failure (see attendance policy).
5. All final examinations in clinical nursing courses are cumulative and worth 30% of the course grade. Percentage of grade for final exams for nursing courses that do not have a clinical component are at the discretion of the faculty member responsible for the course.

Anticipated Absences

Students who must miss class or clinical due to official functions must contact all affected lead teachers and clinical faculty in writing with official notification from the sponsoring department,

including anticipated dates of the absences, within 1 week of the beginning of the semester. For each anticipated absence, the student must make an appointment, at least 2 weeks before the absence, with all affected faculty members to determine how best to make up any missed content. Failure to do so will result in absences being unexcused. In addition to these steps, students are expected to use the notification of absence (NOA) system.

Class Attendance Policy

1. Ordinarily, there are no excused absences from either class or clinical laboratories. However, it is recognized that students must be absent from time to time. Professional persons demonstrate reliability and dependability in these matters by:
 - a. informing appropriate persons when and why they are going to be absent.
 - b. initiating arrangements for makeup work (if appropriate) with faculty.
2. Clinical faculty will require that missed clinical laboratories be made up regardless of the reason for absence. The nature of the make-up lab will be determined by the lead teacher for the course.
3. Students should try to overcome minor indispositions that are not contagious and that do not result in decreased safety of the student's performance in the clinical setting. However, they should not attend class or clinical laboratories if they are ill. For example, students who have colds, flu, or other contagious illnesses are not expected to attend class or clinical laboratories. They are expected to notify the appropriate faculty member and clinical agency in a timely manner.
4. Grave illness or death of close family members is a legitimate reason for absence. Attendance at wedding or other celebrations, except under extraordinary circumstances, are not.
5. Attendance at regularly scheduled University functions involving students' participation (e.g., out-of-town band concerts in which the student is a member) is an example of absence that must be negotiated between the student and the faculty member. See Anticipated Absence statement.
6. Attendance at state conventions or other professional meetings, thereby necessitating absence from class, may be approved based on students' grade point average, and with approval by the instructors whose classes are missed, and the Director of the School of Nursing. See Anticipated Absence statement.
7. See Course Syllabi for attendance requirements for each course.

Clinical Absences and Tardiness

Clinical absences are excused only in the case of personal illness documented by a health care provider or extreme extenuating circumstances. The student must notify the faculty member and the clinical agency **at least 30 minutes prior** to the expected starting time for the lab. Failure to do so may result in failure of the course. All clinical absences must be made up. Absence from $\geq 20\%$ of clinical hours in a course will result in the student being unable to receive credit for the course. For courses with 15 weeks of clinical, a third absence will result in the student being unable to receive credit for the course. For courses with clinical schedules of less than 15 weeks, a second absence would result in course failure.

Tardiness is defined as appearance on the clinical unit at any time past the designated time. Students should begin to develop professional work habits; therefore, the policy states that if three tardies occur, the student may be unsuccessful in the course. The first incidence of tardiness will be documented and the student counseled. The second incidence of tardiness will be documented with referral to the Course Coordinator and will result in a drop of one letter grade for the course. The third incidence may result in course failure.

Communication with Instructors

Please remember that instructors teach multiple courses in multiple programs, in multiple locations, and in multiple formats. Students and faculty should respond to electronic communications within 48 hours, excluding weekends and holidays. Make sure to include a subject in the subject line. Phone calls to instructors should be made after other attempts to communicate with faculty have been unsuccessful or for emergencies. Adhere to hours provided in each course syllabus. Phone calls should be returned within 48 hours, excluding weekends and holidays also.

Requesting Accommodations

The School of Nursing complies with federal ADA guidelines. Any student who requires accommodation should contact Clemson Student Accessibility Services (SAS) at Suite 239, Class of '56 Academic Success Center Building by phone at 864-656-6848 or by email at studentaccess@lists.clemson.edu. If a nursing student or applicant believes that he or she cannot perform required activities satisfactorily without reasonable accommodation, then he or she should register with Clemson University's Student Accessibility Services. It is the student's responsibility to request the accommodation in a timely manner; the university does not provide for retroactive accommodations. Upon receipt of any request for accommodation, SAS will require the student to provide the appropriate and necessary documentation to confirm the disability. Once the disability is confirmed, SAS will determine the appropriate accommodations and either provide for or arrange such reasonable accommodations, academic adjustments, and/or auxiliary aids and services for students. The student is responsible for maintaining contact with SAS and for working with faculty to plan appropriate learning experiences.

Guidelines for Expressing Student Concerns

Students' concerns or complaints about the Undergraduate Program should be handled in a professional manner. Discussion of these issues should be based on facts and should be conducted using a collegial, problem-solving approach. An attempt should be made to resolve the issue in a manner which is satisfactory yet maintains the integrity of the Nursing program. If the issue(s) cannot be resolved through the procedures below, a formal grievance may be filed (See Undergraduate Announcements). Issues involving a course, such as the quality of instruction and fairness and equity in awarding grades should use the following procedures:

1. If the issue(s) concerns a single course, the student(s) should make an appointment with the course instructor and attempt to come to an amicable resolution.
2. If the issue cannot be settled at the course level, an appointment should be made to discuss

the issue with Director of Undergraduate Programs, Mrs. Leslie Ravan at 439 Edwards Hall in Clemson or 459 CU Nursing in Greenville. Mrs. Ravan can be reached at wagner3@clemson.edu or 864-720-2059

3. If the issue cannot be settled with the Director of Undergraduate Programs, an appointment should be made to discuss the issue with the Director of the School of Nursing, Dr. John Whitcomb.
4. If previous discussions do not resolve the issue, an appointment should be made with the Dean of The College of Behavioral, Social and Health Sciences, Dr. Leslie Hossfeld (116 Edwards Hall).

Issues involving the Undergraduate Program such as curriculum, sequencing and scheduling of courses should begin with step 2 above.

Reserve Officers Training Corps (ROTC) Fact Sheet

- The Departments of the Army and the Air Force both maintain ROTC units at Clemson University. Their mission is to produce officers of high quality to pursue both technical and nontechnical careers in the U.S. Army and Air Force. Both two-and four-year programs are available. The four-year program consists of the basic course for freshmen and sophomores and the advanced course for juniors and seniors.
- Scholarships are available to selected ROTC students. Each scholarship pays for tuition, books, and laboratory expenses, in addition to a month stipend during the school year. Non-scholarship advanced cadets also receive a stipend per month. Basic course credit may be awarded to students having one or more years of military service.
- Selected advanced Air Force cadets receive flight training at government expense. Cadets who complete their major course of study and satisfy commissioning requirements as established by law and/or regulations are appointed Second Lieutenants. Ample opportunity exists for graduate study in both services, with temporary deferments possible.

Nursing Students Enrolled in ROTC

- Bachelor of Science with major in Nursing students who are enrolled in ROTC courses may substitute the free electives for ROTC, thereby meeting the University requirement that each college allow 10 elective credits for ROTC.
- Other courses may be substituted if the Department Chairman of the course in question approves the ROTC course as a substitute.
- Nursing students interested in ROTC may contact Aerospace studies in 300 Tillman Hall, or Military Science in Johnstone Hall for more information.

Ms. Lena Burgess (Edwards Hall, Room 433) provides academic counseling and pre-registration advisement for nursing students enrolled in ROTC.

Textbook Policy

Students are strongly encouraged to keep their pathophysiology, health assessment, pharmacology, therapeutic nursing interventions, psychosocial nursing textbooks, and APA

Manual as resources for future nursing courses.

Academic Integrity Policy

“As members of the Clemson University community, we have inherited Thomas Green Clemson’s vision of this institution as a ‘high seminary of learning.’ Fundamental to this vision is a mutual commitment to truthfulness, honor, and responsibility, without which we cannot earn the trust and respect of others. Furthermore, we recognize that academic dishonesty detracts from the value of a Clemson degree. Therefore, we shall not tolerate lying, cheating, or stealing in any form.” (<http://www.clemson.edu/academics/integrity/>).

The Academic Integrity policy states that plagiarism “includes the copying of language, structure or ideas of another and attributing the work to one’s own efforts” (Undergraduate Catalog). The definition of plagiarism does not differentiate between deliberately using someone else’s work without attribution or doing so unintentionally. **Both are plagiarism!**

Some common forms of plagiarism are:

- Directly reproducing or paraphrasing someone else’s work (published or unpublished), including insights and opinions, without attribution, regardless of length.
- Failing to clearly identify quoted material by using quotation marks (for short sections) or block text (for larger sections).
- Directly quoting your own text from previous projects or papers, without attribution. Plagiarism also includes using someone else’s ideas, art, figures, tables, maps, charts, diagrams, and so forth, even if you recreate or reformat the material.

An exception is made for material that is common knowledge. If information is readily available from general reference sources in the chosen field, or if the information appears undocumented in several sources, it may be common knowledge. Whether material is common knowledge is often a judgement call. If in doubt err on the side of caution and cite the source. Never copy text *of any kind* and use it as your own.

Policies Governing Student Behavior

The School of Nursing enforces two sets of guidelines governing student behavior when students are functioning in the role of student nurse. The first is the Code of Conduct which addresses general expectations for conduct in the classroom and clinical settings. The second is the Standards of Professional Practice, which more specifically addresses responsibility and accountability for students in the provision of nursing care.

Code of Conduct

Students of Clemson University School of Nursing are expected to demonstrate professional conduct in both the clinical and classroom settings. Students will demonstrate professional conduct by:

- Attending all class and clinical sessions. Orientation is considered clinical.

- Being prepared for and attentive during class and clinical.
- Arriving and leaving on time for class and clinical.
- Refraining from holding private conversations during class.
- Maintaining respectful, constructive verbal and non-verbal interactions with faculty, peers, and clinical agency personnel.
- Turning off cell phones during class and clinical. Students are not allowed to have cell phones on during class except with faculty permission during a family emergency, and then it must be on vibrate. Students are not allowed to have cell phones on during clinical. Any cell phone use during clinical, except for during approved breaks, is considered patient abandonment and will result in a U for the day.
- Turning off laptops and other electronic devices except for use in class-related activities.
- Refraining from signing in for another student for class attendance or any other activity for which signing in is required. Signing in for another student is considered academic dishonesty and will be referred to Academic Integrity Committee
- Taking tests in the approved setting. Students must take Kaplan in a proctored environment and must sign a roster to document their presence. Failure to do so is considered academic dishonesty and will be referred to Academic Integrity Committee.
- Refraining from practicing invasive procedures without supervision. Students will not practice of any invasive procedure in an unsupervised setting. Such unsupervised practice is a violation of the Nurse Practice Act as well as School Policy and Code of Conduct and will result in dismissal from the program.
- Refraining from taking equipment without approval. Students will not take any equipment without authorization from any clinical practice. Taking equipment without approval is considered theft and will result in referral to the Board for Ethics and Community Standards for disciplinary action.

Students who fail to meet the above expectations will receive a written reprimand specifying the problem behavior and expected behavior change. The faculty member will counsel the student to clarify expectations and obtain the student's signature acknowledging the reprimand and expectations. If the problem behavior is related to a clinical experience, the student will receive an unsatisfactory for the clinical day. The reprimand will be noted on the student's clinical evaluation tool and a copy of the reprimand will be maintained in the student's file. A second written reprimand regarding any of the above behaviors will result in the student's final grade being dropped by one letter grade. A third breach of the above code of conduct will result in the students being dropped from the course. If the student has inadequate withdrawal hours or if the date is past the drop date, the student will be awarded a D in the course.

Breach of the following expectations on **even one occasion** may result in failure of the course. Students are always expected to:

- Notify the clinical instructor at least 30 minutes prior to any clinical tardiness or absence. Sending word by a classmate, emailing, and/or leaving a message is not adequate. **The student must speak to the instructor and is responsible for having the phone number and contact information available when needed.**

- Be truthful and honest. Cheating and/or providing false information to faculty members or clinical personnel will not be tolerated and can result in dismissal from the Nursing Program.

Civility Statement

Students of Clemson University are expected to demonstrate professional conduct in both the classroom and the clinical settings. Students will demonstrate professional conduct by maintaining respectful, constructive verbal and non-verbal interactions and written communication with faculty, peers, and clinical agency personnel.

Students who fail to meet the above expectations will receive a written reprimand specifying the problem behavior and expected behavior change. The faculty member will clarify expectations and obtain the student's acknowledgement of expectations. A copy of the reprimand will be maintained in the student's file. A second written reprimand regarding any of the above behaviors will result in the student's final grade being dropped by one letter grade. A third breach of the above code of conduct will result in the students being dropped from the course. If the student has inadequate withdrawal hours or if the date is past the drop date, the student will be awarded a D in the course.

Breach of the following expectation on even one occasion may result in failure of the course: Students are always expected to be truthful and honest. Cheating and/or providing false information to faculty members or clinical personnel will not be tolerated and can result in dismissal from the Nursing Program.

Standards of Professional Practice

Nursing students are expected to demonstrate responsibility and accountability according to the Standards of Professional Practice. Practice may be considered unsafe and/or unprofessional when a student fails to use the nursing process effectively by engaging in one or more of the following activities:

1. Failure to recognize the need for assistance when unprepared for nursing action.
2. Failure to take nursing action when such action is essential to the health and safety of the client.
3. Failure to recognize the influence of own attitudes and behavior on care of clients.
4. Failure to assume responsibility for completing nursing actions.
5. Performing actions which are detrimental to the health and safety of the client.
6. Compromising patient confidentiality. No identifying patient information is to be recorded on clinical paperwork or Personal Digital Devices. Clinical paperwork and Personal Digital Devices are to be safeguarded at all times to prevent loss and access by unauthorized people.
7. Functioning outside the scope of student nurse practice.
8. Violating clinical agency policies or procedures.
9. Attending any clinical laboratory while under the influence of alcohol or drugs (please note that any student violating this provision is also subject to the recommendation of the Drug and/or Alcohol Abuse Policy Procedure in the Clemson SON Student Handbooks).

Students violating a Standard of Professional Practice will be counseled and may receive an Unsatisfactory grade for the clinical, resulting in failure of the nursing course. Any student committing a second violation of the Professional Practice in any nursing course for the duration of the program may be immediately dismissed from the School of Nursing.

The School of Nursing has the authority to dismiss any student if he or she conveys deliberate false information regarding nursing care.

Approved by SON Faculty February 2006

Recommended Technology Capabilities

- Windows or Macintosh operating system
- Internet access
- Highly recommended to have Cable modem or DSL
- Internet Explorer, Mozilla Firefox, or Safari
- Microsoft Office
- Macromedia Flash Player
- Web camera
- Microphone, headphone
- Computers are also available in the University Center library

Distance Education Guidelines

The School of Nursing uses the Canvas Learning Management System to facilitate online education. Students are expected to actively participate in all online assignments to be successful in their courses. Canvas can be opened by:

1. Opening the internet browser to Clemson at www.clemson.edu
2. Select the Student link
3. Select the Canvas menu option
4. Login with the Clemson University name and password
5. Click on the course at the welcome page
6. Enter the Canvas classroom

Instructors will use Canvas as they deem appropriate for each course. Each instructor will review the setup of his/her course and requirements for discussion boards, participation, deadlines for participation, etc. Please refer to each syllabus for guidelines.

Instructors may require synchronized or asynchronous participation. Synchronous participation requires that students participate with each other and/or the instructor at the same time. Asynchronous participation requires that students participate at different times, but read and assimilate information from one another's postings.

Instructors may require various levels of online participation. For example, one instructor may require students to log into Canvas 3 times per week while another instructor may require 4 times per week.

Netiquette

Remember when communicating electronically that the person at the other end cannot see your facial expression nor perceive other indicators of your intended emotional expression. Therefore, things can be taken out of context and the reader of the communication may misconstrue what the writer intended. A message may be seen as angry or judgmental when it was not intended to be that way. Please be mindful of all your communication using email and Canvas.

Using all capital letters may be interpreted as shouting. Be sure that any use of humor can be interpreted as humor and that it is not offensive in any way. Keep critiques constructive. Do not be antagonistic. Do not plagiarize. Be professional at all times.

Helpful Websites

Clemson University	http://www.clemson.edu
Technology Help	http://www.clemson.edu/ccit
Library Services	http://www.lib.clemson.edu
Registrar's Office	http://www.registrar.clemson.edu
Financial Aid	http://www.clemson.edu/financial-aid/
CU CAPS	https://www.clemson.edu/campus-life/student-health/caps/

Peer to Peer File Sharing

In regard to the appropriate use of copyrighted materials, the use of peer-to-peer (P2P) file-sharing networks for the sole purpose of obtaining materials outside of the copyright owner's exclusive rights of reproduction and distribution is a violation of U.S. federal law and could be subject to disciplinary action by the University. According to the U.S. Copyright Office:

"Uploading or downloading works protected by copyright without the authority of the copyright owner is an infringement of the copyright owner's exclusive rights of reproduction and/or distribution. Anyone found to have infringed a copyrighted work may be liable for statutory damages up to \$30,000 for each work infringed and, if willful infringement is proven by the copyright owner, that amount may be increased up to \$150,000 for each work infringed. In addition, an infringer of a work may also be liable for the attorney's fees incurred by the copyright owner to enforce his or her rights.

Whether or not a particular work is being made available under the authority of the copyright owner is a question of fact. But since any original work of authorship fixed in a tangible medium (including a computer file) is protected by federal copyright law upon creation, in the absence of clear information to the contrary, most works may be assumed to be protected by federal copyright law.

Since the files distributed over peer-to-peer networks are primarily copyrighted works, there is a risk of liability for downloading material from these networks. To avoid these risks, there are currently many "authorized" services on the Internet that allow consumers to purchase copyrighted works online, whether music, e-books, or motion pictures. By purchasing works through authorized services, consumers can avoid the risks of infringement liability and can limit their exposure to other potential risks, e.g., viruses, unexpected material, or spyware." This includes sale of instructional materials. No student shall sell or attempt to sell any information provided by any University member in any course of study offered at Clemson University (Clemson University Code of Conduct #15) –Added 8/25/16

Students who fail to meet the above expectations will receive a written reprimand specifying the problem behavior and expected behavior change. The faculty member will counsel the student to clarify expectations and obtain the student's signature acknowledging the reprimand and expectations. If the problem behavior is related to a clinical experience, the student will receive an unsatisfactory for the clinical day. The reprimand will be noted on the student's clinical evaluation tool and a copy of the reprimand will be maintained in the student's file. A second written reprimand regarding any of the above behaviors will result in the student's final grade being dropped by one letter grade. A third breach of the above code of conduct will result in the students being dropped from the course. If the student has inadequate withdrawal hours or if the date is past the drop date, the student will be awarded a D in the course.

Breach of the following expectations on **even one occasion** may result in failure of the course. Students are always expected to:

- Notify the clinical instructor and clinical agency at least 30 minutes prior to any clinical tardiness or absence. Sending word by a classmate, emailing, and/or leaving a message is not adequate. **The student must speak to the instructor and the clinical unit and is responsible for having those phone numbers available when needed.**
- Be truthful and honest. Cheating and/or providing false information to faculty members or clinical personnel will not be tolerated and can result in dismissal from the Nursing Program.

Clinical Laboratory Requirements

All nursing students are required by the School of Nursing and clinical agencies to meet specific requirements in order to enroll in nursing courses with a clinical lab. A student information form is provided for submission of documentation of having met these requirements (See page 23 or 61 of this handbook). The form along with copies of all required documentation (see page 37) must be received by the School of Nursing Office of Undergraduate Studies by the stated deadline: (July 1st). **If all documentation is not received by the deadline, the School of Nursing will drop those students from all nursing courses.** Students who are dropped must submit all documentation before being added back to the courses during late registration. Reinstatement to courses will be dependent upon space availability. Students who do not comply with the stated requirements will not be allowed to enroll in or attend any clinical nursing labs.

From time to time, new requirements may be added and students may be required to complete and submit new forms or to complete such requirement on line as instructed. Submission dates may vary and students will be notified by the student services coordinator of required deadlines.

Helpful Suggestions for Completing Clinical Laboratory Requirements

All clinical requirements should be completed beginning May 1st and turned in no later than July 1st. Packets should be turned in to Robin Metler-Atkinson or Cynthia Mihalchick by July 1st. Failure to turn the requirements in by July 1st will result in you being dropped from your clinical courses.

Please do not turn in original copies of documentation. Please turn in copies with your Student Information Sheet and keep the originals in a file in your possession.

Remember the deadlines and make certain you have turned in everything to avoid being dropped from your nursing courses. If dropped, the School of Nursing cannot guarantee students will be placed back into the original sections of the courses from which they were dropped. Please read the following information carefully.

Clemson University School of Nursing IMMUNIZATION & ENROLLMENT REQUIREMENTS

Students must follow CUSON and clinical agency requirements. **All Immunization & Enrollment requirement information and due dates will be relayed to the student via students' Clemson.edu email.** Requirements are subject to change and will be updated as needed. Documents must be submitted in .pdf format and submitted via email to the cohort-specific Clinical Clearance Coordinator for their cohort/program.

Acceptable Forms of Vaccination Documentation

- All Forms must have names, DOB, etc.
- Copy of vaccination or immunization record
- Copy of laboratory report
- Form signed by health care professional
- EMR detailed with patient name, date, etc.

Required Immunizations

MMR (Measles, Mumps, Rubella): Submit verification of a series of 2 doses of vaccine with dates.

Hepatitis B (Hep B): Submit verification of series of three (3) Hep B shots.

Varicella (Chicken Pox): Submit verification & dates of 2 doses of the varicella vaccine, or documentation of positive titer showing immunity. Report of having had the chicken pox is **not** acceptable. You must have 2 doses or positive titer.

Tdap (Tetanus/Diphtheria/Pertussis): Submit documentation of immunization. Given every 10 years. Immunization must be current & maintained.

Flu Shot: Required documentation due **annually** by October 15th.

Tuberculosis Screening

Tuberculosis Screening is required annually with the first submission being a **Two-Step PPD** (two separate TB tests performed within 3 weeks of each other). A QuantiFeron Gold blood test can be substituted for the Two-Step PPD.

Criminal Background Check (CBC):

Current background check by SRandi at www.srandi.com for Clemson University NUR. Letter of expungement or satisfaction required for any violations or arrest shown on CBC.

BLS / CPR Certification

A valid BLS/CPR certification must be held during enrollment in nursing program. The **ONLY** acceptable CPR certification is the in-person BLS/CPR for Health Care Providers 2-year certification through the **American Heart Association** (www.heart.org). The course must include 1 person/2 person, infant, child, choking & AED. **NOT Acceptable:** Community CPR, Heart Saver CPR, or Red Cross CPR.

Professional Liability Insurance

www.nso.com

Professional Liability Insurance for student nurses with limits of \$1,00,000 per occurrence / \$6,000,000 aggregate. Insurance is required before starting clinical and renewable yearly while in the nursing program.

COVID-19 Vaccine

Documentation of being fully vaccinated against the COVID-19 virus is recommended, but not required.

Proof of two doses of the Pfizer or Moderna OR One dose of the Johnson & Johnson vaccine. **If not vaccinated, you must present an Approved Medical or Religious Exemption from affiliating hospital.**

Additional Health Requirement Information

- Completing your health requirements by the assigned due dates is a professional responsibility expected of all students. Failure to meet all health, certification, and documentation requirements by designated deadlines will prevent the student from beginning or continuing in the nursing program. The student may be dropped from all nursing courses. Reinstatement to nursing courses will depend on space available.
- Please make copies of all documentation required, keep originals in your files, and turn in copies of documentation as one complete packet. Faxed copies not accepted.
- Students are encouraged to report any physical or psychological changes that may impact their ability to progress in the nursing program to their faculty advisor.
- Immunizations prevent thousands of deaths each year and prevent countless disabilities. When receiving immunizations, care should be taken to read recommendations, contraindications and risks for each immunization. If an immunization is contraindicated due to allergy, disease or pregnancy, written verification of the vaccination contraindication must be submitted to the SON with signature of health care provider and student.
- Meningococcal vaccine is recommended in addition to the required vaccines. Students should have one meningococcal vaccine in the dose and route specified by manufacturer.

Health Protection Policy for Faculty and Students

All students and faculty are expected to provide quality care to all clients whatever their diagnosis. Faculty and students must be aware of policies and procedures to reduce the risk of infection to self and others. Students will be taught current information regarding preventing the acquiring and transmitting of infections and will be provided laboratory simulation practice utilizing Standard Precautions. In the event that a nursing student is exposed to an infectious disease or injured at a clinical facility, the student should report immediately to the instructor and nurse manager then proceed to employee health or the emergency room as directed. Any incident must also be reported to the School of Nursing at 864-656-7622.

Students with special health concerns that may place them at risk during clinical experiences should discuss their situations with the Director of Undergraduate Programs and Lead Teacher for the clinical course prior to the beginning of the clinical experience. These students may be required to submit medical clearance with specific guidelines for their clinical experiences. Students who are unable to provide clinical care without undue risk may be required to delay taking clinical courses until they are safely able to do so.

Student Policy Governing Use and/or Abuse of Drugs and/or Alcohol

Use of substances which interfere with the judgment and/or motor coordination of students of the School of Nursing pose unacceptable risk for patients, the University, the faculty and health care agencies. Therefore, use of alcohol, use of illegal drugs and/or the misuse of legal therapeutic drugs by nursing students while engaged in any portion of their educational experience is strictly prohibited. Furthermore, nursing students are strictly prohibited from being under the influence of alcohol or any drug while engaged in any portion of their formal educational experience. Any faculty who suspect a violation of this policy are **required** to take action. The actions to be taken are spelled out in the procedures which follow. Students are required to read and acknowledge by signature that they understand this policy. Parents or guardians of students will be informed of the policy. As this policy refers to positive drug/alcohol screen procedures, the following definitions of positive will be used:

- Screen results indicating use of an illegal drug;
- Screen results indicating non-therapeutic drug level of prescribed or non-prescribed drugs;
- Screen results indicating presence of alcohol in blood.

Drug Policy and Procedure Statement

The Joint Commission (TJC, 2004) requires that all staff, students and faculty meet standards relative to criminal background and freedom from drugs. In compliance with Joint Commission and clinical agency requirements, Clemson University School of Nursing requires drug testing (urine screens).

Procedure for Drug Testing

Prior to participation in clinical facilities, students will be required to follow the procedures established by the School of Nursing. **All costs associated with testing are the responsibility of the student.** Tests are conducted by a qualified laboratory, using established methods and procedures. Confidentiality of the student, as well as the integrity of the urine sample, will be protected. The procedure for collection, as determined by the collection site, will involve a witness to the voiding of the urine sample, securable urine containers, and chain of custody procedures. The urine sample will be screened for amphetamines, barbiturates, benzodiazepines, inhalants, cocaine, marijuana, methadone, methamphetamines, phencyclidines (PCP), opiates/morphine and tricyclic antidepressants. A drug test will be presumed positive if any of the drugs listed are found. Presumed positives will be confirmed by a second test from the original urine sample. If the test is positive, the available evidence, including health history, will be used to determine the presence or absence of drug abuse by a college health officer. The School of Nursing will ensure confidentiality of results by making the information available only to the student and appropriate administrators.

Refusal

Refusal by a student to submit to testing will result in that student's dismissal from the School of Nursing.

Positive Results

Positive drug screens shall be reviewed by the Undergraduate Director. If the student tests positive for one or more of the above drugs and asserts that the positive test is a result of taking a drug prescribed to them by a health care provider, the Undergraduate Director will review, with the student, the actual prescription, amount taken daily, the time and amount of the last dose, and the reasons for the prescribed drug. Additionally, the student will be required to contact the prescriber and/or pharmacy and authorize release of medical information to indicate the illness for which the drug was prescribed, the length of time the student will have to take the drug, and other relevant information.

Reasonable Suspicion of Drug/Alcohol Use

In addition to the pre-clinical screening process for substance abuse, for the protection of patients, faculty, staff, and students, the School of Nursing has the right to require a student to submit to testing for substance abuse at the student's expense when a faculty member has reasonable cause to believe that a student is under the influence of alcohol and other drugs including:

1. Observable phenomena, such as direct observation of drug use or the physical symptoms or manifestations of being under the influence of a drug or alcohol, such as, but not limited to, slurred speech, impaired physical coordination, inappropriate comments or behaviors, pupillary changes, noticeable change in grooming habits or odor of alcohol or other drugs.
2. Abnormal conduct or erratic behavior, absenteeism, tardiness or deterioration in performance.
3. A report of drug use provided by credible sources.
4. Evidence of tampering with a drug test.
5. Information that the individual has caused or contributed to harm of self, visitors, other staff, or patient while under the influence of drugs.
6. Evidence of involvement in the use, possession, sale, solicitation or transfer of drugs. If a faculty member observes such behavior, and if such behavior is observed or validated by another faculty member or clinical agency staff member, the faculty member must excuse or remove the student from the educational or patient setting immediately and contact the School of Nursing Director in order to review the situation and authorize the faculty member to make arrangements for testing. The faculty member is to make arrangements to have the testing performed immediately. If a drug use/abuse incident occurs while on a clinical unit, the student will be responsible for obtaining transportation to the designated lab or other testing agency; the student will not be allowed to drive from the clinical facility. The student will be requested to sign an informed consent to be tested before the specimen is collected at the designated testing agency. The student's failure to consent to the substance abuse test shall result in immediate dismissal from the School of Nursing. (See procedure for positive screens above).

Confidentiality

The CHO (College Health Officer) will report all test results to the Director of the School of Nursing. The results will be maintained in a file in the Director's office. Confidentiality of test results will be maintained with only the Director, the appropriate university administrator, and the student having access to the results.

Readmission

To be considered for readmission, students who are dismissed from the nursing program due to a positive substance abuse screen must:

1. Submit a letter from a treatment agency verifying completion of a substance abuse treatment program.
2. Prior to readmission, submit to an unannounced substance abuse screening at the student's expense. A positive screen will result in ineligibility for readmission.
3. Submit to random drug tests as requested by the School of Nursing after readmission. A positive screen will result in permanent dismissal.

Clinical Dress Code

The professional appearance of our students should reflect a positive image of the School of Nursing. The following dress code applies in all clinical areas, except psychiatry and selected community experiences.*

1. Uniforms:

- A. All students must purchase the SON uniform: purple scrub top embroidered with the orange Clemson tiger paw, white slacks below ankle length; white, professional closed-toe shoes with solid white socks. White all-leather athletic shoes are acceptable.
- B. Uniforms should be clean, neat and wrinkle-free.
- C. Uniforms should be laundered after each clinical.
- D. Underwear should be white or flesh color without designs. No thong underwear is to be worn in the clinical setting.
- E. White or purple lab coats/jackets are the only addition to uniforms.

2. Identification (name) badges are considered part of the official uniform and are required of students in all clinical areas. **Students arriving to clinical without required identification will be dismissed and receive a "U" (Unsatisfactory) for the day defined as a 'Failure to be prepared for clinical'.**

3. Wrist watches with a second hand, professional pins, such as Sigma Theta Tau are considered a part of the dress code. Wedding bands and one pair of small pierced earring studs may be worn (no other body piercings should be visible). Neck jewelry should not be visible. In Newborn Nursery, Labor/Delivery and Operating Room (OR), watches and other jewelry should be pinned to the pocket of scrub attire, if needed.

4. Hair Guidelines:

- A. Clean and well groomed.
- B. Hair should be kept away from the face/shoulders; and should not fall forward while providing care or other professional acts.
- C. Only "human" hair colors should be visible head/facial/body hair.
- D. Long hair will need to be pulled up into a ponytail or bun that is off the shoulders.
- E. No hair accessories, e.g. ribbons, yarn may be worn.
- F. Facial hair, e.g. beards, mustache should be neatly trimmed.

5. Fingernails must be clean and not extend beyond fingertips. No nail polish, acrylic, gel or

artificial fingernails may be worn in the clinical setting.

6. Make-up should be appropriate. No false eyelashes, perfume, or cologne should be worn.
7. No gum, drinks, or food are allowed in clinical area.
8. Students should refrain from smoking while wearing uniforms.
9. One pair pierced earrings (no dangly earrings) in ears. No visible piercings will be permitted (i.e., tongue, eyebrow, nose, chin, lip, or otherwise). Clear spacers may be permitted at the discretion of the clinical instructor and if abides with the piercing policy of the clinical facility.
10. Tattoos may be visible if the images or words do not convey violence, discrimination, profanity, or sexually explicit content. Tattoos containing such messages must be covered. Clemson University faculty and/or agency staff reserve the right to judge the appearance of visible tattoos.

*In Mental Health Nursing (NURS 4010), Community Health (NURS 4150), and Leadership/Management (NURS 4050), the clothing is to be in keeping with the policy of the institution.

*In Pediatrics (NURS 4110), students may wear printed scrub tops and coordinated uniform slacks or pants.

Statement of Unsafe Clinical Practice

Practice may be considered unsafe when a student fails to use the nursing process effectively by engaging in one or more of the following activities:

1. Failure to recognize the need for assistance when unprepared for nursing action.
2. Failure to take nursing action when such action is essential to the health and safety of the client.
3. Attending clinical laboratory while under the influence of alcohol or drugs.
4. Failure to recognize the influence of own attitudes and behavior on care of clients.
5. Lying or deliberately giving inaccurate information regarding nursing care.
6. Performing nursing activities which are detrimental to the health and safety of the client.
7. Failure to assume responsibility for completing nursing actions.

Guidelines for Evaluation of Student Clinical Performance

1. Students should expect to be provided with criteria for evaluation for each assignment which is to be graded.
2. Students should expect that faculty will collect and retain such evidence of student performance as is necessary for fair and accurate formative and summative evaluation.
3. Students should expect that faculty members will return clinical written work in such time to insure their use in the evaluation process.
4. Students or faculty members may request validation from another faculty member of student performance when in doubt about whether the student is unsafe.

Transportation to the CU Nursing Building in Greenville

The CU Nursing Route, operated by Clemson Area Transit (CATbus), connects Clemson University main campus from two locations (P-8 parking lot and Cherry Road at Bryan Circle) to the CU

Nursing building located at 605 Grove Road, Greenville, SC. This route is tailored to nursing classes, sim labs, orientations, and exams scheduled at the CU Nursing building in Greenville. All students, faculty, staff, and guests of the CU Nursing program are encouraged to ride. We do not provide transportation to clinicals or practicums for any students but if you need assistance with transportation to the Greenville Memorial Hospital campus, please contact Mrs. Anna Claire Butler, Student Services Coordinator at 864-720-2054 or acbutle@clemson.edu. Note that routes are subject to cancellation based on ridership. Any changes will be updated on the CU Nursing website and communicated to you via email. The CU Nursing transit schedule and other important information can be found at: <https://www.clemson.edu/campus-life/parking/transit/campus-services/nursing-route.html>

Clinical Laboratory Transportation

Clinical laboratories for nursing courses are held in a variety of locations including area hospitals, health departments, child-care centers, rehabilitation centers, schools, and industries, as well as other settings. Students are required to provide their own transportation to and from clinical sites. Lack of transportation is not considered an acceptable reason for not attending clinical experiences.

Cancellation of Clinical Labs Due to Hazardous Driving Conditions

Clinical laboratories will be canceled when one of the following conditions exist:

- Clemson SON follows the Pickens County school system in decisions concerning school/clinical closing. If Pickens County schools are closed due to hazardous driving conditions, clinical labs are cancelled without penalty to the students. Also, if schools in the county/area of the clinical facility are closed due to hazardous driving conditions, clinical labs are cancelled without penalty to the students. In any case when clinical is cancelled, students may be required to do a case study or make up the time.
- If hazardous driving conditions result in delayed school openings in Pickens County or the county/area where the clinical facility is located, faculty need to come at the new time. For example, if clinical is scheduled to start at 0645, a 2-hour delay would start at 0845. If schools are delayed due to "cold" or reasons other than hazardous driving conditions, clinical should not be delayed.

If a 2-hour delay is announced, lead teachers whose courses have 6-hour clinicals will determine the best course of action for the day by contacting the Director of Undergraduate Programs to determine the continuity business plan. The lead teacher will notify affected clinical instructors whether to have students report at the new time or to plan to make up the lab.

Make-up options for missed clinicals include: (1) Making up the full clinical day later in the semester, the preferred option, if possible. (2) Implementing a useful alternate learning activity. Such an activity, if chosen, should include learning objectives, guided learning activity (e.g. Kaplan simulations, case studies, etc.), and should roughly reflect the number of hours missed. Faculty who choose to use an alternate learning experience should identify the assignment

early in the semester and have it ready for use as needed. (3) Scheduling a simulation in the Clinical Learning and Research Center/Skills Lab. This is an excellent option, but faculty must ensure that the lab is available, and that scheduled time works for all students.

In the event that questionable weather, e.g. freezing precipitation, on the evening before a morning clinical might create hazardous driving conditions, but no announcement has been made about school closings, the faculty should set up a "calling tree" and/or send an e-mail to instruct students that they should not come if the roads are unsafe where they live, regardless of closing decisions.

If a decision to close schools is made during the school day due to inclement weather creating hazardous driving conditions, students should be sent home as soon as that decision is made, due to safety considerations.

Faculty and students must always use their personal judgment when unforeseen weather conditions are encountered and must keep safety first and foremost. Students and faculty should listen to one of the following stations to obtain information on weather conditions and school closings:

TELEVISION

WYFF-TV (Greenville, Channel 4)
WSPA-TV (Spartanburg, Channel 7)
WLOS-TV (Asheville, Channel 13)
WHNS-TV (Asheville, Channel 21)

RADIO

WAHT (Clemson, 1560 AM)
WSBF (Clemson, 88.1 FM)
WESC (Greenville, 92.5 FM)
WSSL (Greenville, 100.5 FM)
WMYI (Greenville, 102.5 FM)

Social Media Policy

*Adapted from White Paper: A Nurse's Guide to the Use of Social Media; 2011
National Council of State Boards of Nursing*

- Awareness and caution are required to avoid inadvertently disclosing confidential or private information about patients. All Clemson University School of Nursing students are expected to comply with the following requirements related to the use of social media:
- First and foremost, nurses and nursing students must recognize that they have ethical and legal obligations to maintain patient privacy and confidentiality at all times.
- Students are strictly prohibited from transmitting by way of any electronic media any patient-related or facility related information and/or images. In addition, students are restricted from transmitting any information that may be reasonably anticipated to violate patient rights to confidentiality or privacy, or otherwise degrade or embarrass the patient.
- Do not share, post, or otherwise disseminate any information, including images, about a patient or information gained in the nurse-patient relationship or within your clinical facility with anyone.
- Do not identify patients by name or post or publish information that may lead to the identification of a patient. This includes any information about the patient: name, address, age, gender, diagnosis, room number, admission date, discharge date, date of birth or death, date of care, or anything else. **NO PATIENT OR FACILITY RELATED INFORMATION CAN BE POSTED ON SOCIAL MEDIA!!** Limiting access to postings through privacy settings is not sufficient to ensure privacy.
- Never refer to patients in a disparaging manner, even if the patient is not identified.
- Do not take photos or videos of patients on personal devices, including cell phones.
- Maintain professional boundaries in the use of electronic media. As with in-person relationships, the nurse has the obligation to establish, communicate and enforce professional boundaries with patients in the online environment. Use caution when having online social contact with patients or former patients. Online contact with patients or former patients blurs the distinction between a professional and personal relationship. The fact that a patient may initiate contact with the nurse does not permit the nurse to engage in a personal relationship with the patient.
- Do not post any information regarding work related issues. Do not even post seemingly innocuous information such as "It was a busy day". Such information could be used in a lawsuit to imply various things about the work environment.
- Promptly report any identified breach of confidentiality or privacy to your instructor and lead teacher.
- Be aware of and comply with facility policies regarding use of employer-owned computers, cameras and other electronic devices and use of personal devices in the work place.
- Do not make disparaging remarks about employers or co-workers. Do not make threatening, harassing, profane, obscene, sexually explicit, racially derogatory, homophobic or other offensive comments. **DO NOT POST ANY INFORMATION WITH REFERENCE TO YOUR SPECIFIC CLINICAL EXPERIENCE.**
- Do not post content or otherwise speak about employer or facility.
- **Summary of CU SON Social Media Policy: Do not post any clinical, patient, or facility related information on any social media. Doing so will result in disciplinary action, up to and including dismissal from the clinical, the SON and/or Clemson University.**

Policy for Use of Personal Digital Devices in the Clinical Area

- Personal digital devices (PDD's), including phones, tablets, laptops, or other digital devices, are to be used in the clinical areas only as approved in advance and directed by faculty. Their use is primarily to access clinical support applications that have been stored on the device. Use of portable electronic devices in clinical is regulated by the clinical agencies, local, state, and federal regulations and laws and by the School of Nursing. All students are fully responsible for following all regulations of the Health Insurance Portability and Accountability Act (HIPAA) guidelines and for following HIPAA guidelines when using their PPD's in the clinical or other settings.
- No personal health identifiers (PHI) can be entered into the device. All personal health identifiers must be removed from any patient data collected by students on PPD's. Students are fully responsible to ensure that they adhere to all HIPAA regulations at all times. This includes proper management of confidential client information.
- **All telephone and camera functions must be disabled during clinical** and lab sessions by placing devices in "Airplane" mode.
- With the exception of instructor approved activities, ALL PHONES WILL REMAIN ON AIRPLANE MODE in the clinical area. Students must adhere to professional standards for all communications, including maintaining confidentiality, proper conduct of communication, and communicating appropriate material.
- Using the device for personal, non-school related functions is strictly prohibited. **Inappropriate use or violation of HIPAA guidelines may result in dismissal from the clinical, the School of Nursing and/or Clemson University.** Inappropriate use includes making or receiving personal calls while in the clinical area, sending or receiving personal texts while in the clinical area, accessing any non-clinical related web-sites while in the clinical area, taking pictures during clinical, or recording any PHI on the device.
- Students should only use the personal digital device in areas designated by the instructor in compliance with institutional policy
- Infection control precautions must be maintained when using personal devices in patient care areas (See Personal Digital Device Infection Control below).
- All students will sign the CU SON electronic compliance form indicating that they have read and understood these policies. This form will be placed in each student's file.

Personal Digital Device Infection Control

- Wash hands before using handheld device.
- Do not handle device with contaminated gloves.
- Wipe down handheld device using solutions recommended by manufacturer and approved by the institution.
- Avoid placing device on surfaces that can possibly contaminate device, such as bedside tables or patients' beds.
- Adhere to infection control policies at all times, especially while in isolation rooms.
- Keep in mind the risk for transmission of organisms is not only to your patients, but also to yourself and your family and friends.

Summary

- 1) Protected Health Information (PHI) **cannot** be entered into the digital device. All patient related information is protected.
- 2) Phones must be in Airplane mode while in clinical.
- 3) Pictures cannot be taken in the clinical setting.
- 4) The usage of personal cell phone functions, including personal text messaging, personal calls, or accessing non-clinically related websites is prohibited during clinical hours.
- 5) Cleaning of digital device must comply with the clinical organization's infection control policy and procedures. If the device becomes contaminated, it should be cleaned with the recommended disinfectant. If a patient is on isolation, insure that appropriate infection control measures are maintained. Hand hygiene is the best method of preventing transmission of disease.
- 6) **Inappropriate use of personal digital devices or violation of HIPAA guidelines may result in dismissal from the clinical, the School of Nursing and/or Clemson University.**

Identity Precautions

It is important to remember that information posted on YouTube, Facebook, Myspace, Twitter, etc. is available to everyone in the world who has internet access, including Clemson University faculty and staff and your potential employers. Students are urged to consider all possible implications of such postings on these and other internet networks. The best postings adhere to appropriate internet etiquette and portray a positive image that you would not hesitate to present to a potential employer.

SECTION IV: SCHOOL OF NURSING FACILITIES, RESOURCES, & STUDENT ORGANIZATIONS

CBSHS Academic Advising Center

The CBSHS Academic Advising Center is located in 309 Edwards Hall. The Academic Advising Center services are available for a variety of services for students; however, the primary purpose is to provide students with essential academic advising services. The office is open Monday through Friday from 8:00 a.m. until 4:30 p.m. Freshman and Sophomore nursing students are advised by 2 professional academic advisors. Once nursing students enter their clinical semester, nursing students will be advised by faculty advisors.

Advisors are available by appointment and students may schedule appointments and view drop-in hours (if available) through CU Navigate (Clemson.campus.eab.com)

Academic Advising Center Personnel for Nursing

Allysa Sutton, Director of Academic Advising
allysas@clermson.edu,
864-656-5495

Deja Kenion, Last Name A-L; Prospective First-Year students
dkenion@clermson.edu,
864-656-3385

Leigh Spooner, Last Name M-Z; Transfer/Change of Major
rspoone@clermson.edu,
864-656-5506

CBSHS Academic Advising Center provides the following services:

Pre-Registration Advising

The Academic Advising Center holds advising sessions prior to course registration for students with an advisor. Students are emailed and given a link to sign up for appointments in CU Navigate, the on-line advising appointment system. Students must attend their advising registration session to register for courses.

Advising appointments are also available outside of pre-registration. Please always check CU Navigate for appointment availability.

Permission to Take Courses away from Clemson University

Students who wish to take a course at another institution must complete a "Request for Approval to Take a Course Elsewhere" form prior to enrolling in the course. The appropriate form is available at Clemson.edu/registrar/documents/credits-taken-elsewhere.pdf. Students must complete the form indicating the school name, course number and title. Your academic advisor will check the transfer credit database to verify that the course will transfer appropriately. If the course is not

listed on the database, students will be directed to see the evaluator in the department where the course is taught at Clemson for approval. Once the transfer approval is given, an advisor will sign the form and the student will email the completed form to ESSTranscripts@Clemson.edu. The form includes Clemson University rules and regulations that governs a student receiving credit for course work. Please note that the courses with an asterisk on the curriculum sheets may not be taken elsewhere for moved to another semester.

Dropping or Adding Classes

Students may use the online registration system to add or drop non-nursing classes during the registration period until the last day to add or drop classes as posted by the University Registrar's Office.

Scholarships

External scholarship opportunities, which are not a part of the University's Financial Aid program, are communicated to all nursing students via email as they become available.

Communicating with your Advisor

Advisors **do not** use g.clemson emails – please be sure to use the appropriate email address or you will not receive a response. Please communicate with your advisor kindly and professionally. Email is not to be used as text messages. Please also be aware of your time, place, and manner when communicating with your advisor. Advisors are a resource, and they want to help you succeed.

Joseph F. Sullivan Center

The Joseph F. Sullivan Center is operated by the College of Behavior, Social and Health Sciences. This Center provides unique opportunities for students to gain experience in providing health promotion, disease prevention and wellness services. Under the guidance of faculty, students plan and implement these services in a well-equipped, up-to-date health facility.

Clinical Learning & Research Center

Mission Statement

The Clinical Learning & Research Center (CLRC) will support current and anticipated instructional, research, and service programs of the College of Behavior, Social and Health Sciences. The primary focus of support is for the faculty, staff, and students of the School of Nursing and the Department of Public Health Sciences.

Contact

Kim Hill, Associate Director of Simulation; 203A Edwards Hall; 656-5477; KKamp@clemson.edu

Hours

Monday – Thursday, 8am-6pm; Friday 8am-4:30pm Note: Hours may vary during summer sessions; The Clinical Learning & Research Center (CLRC) is closed for all University staff holidays

Services

The Learning Resource Center provides students with use of a computer lab equipped with sixteen computers, wireless internet access, photocopier, scanner, flip camera, comfortable study areas, and two study rooms with large flat-screen televisions, a DVD player, and VCR capabilities.

Book/Video/CD/DVD Collection

The LRC provides two primary collections for use in the instructional process by faculty and students.

- a. Book collection – this collection is a nursing/health-based collection and is available for a two-week checkout to faculty/students for use in the learning process.
- b. Video/CD/DVD collection – this collection primarily serves as a faculty-based resource for assigning students audiovisual tools to enhance the classroom/lab experience. The loan period for faculty is for duration of use. Resource lists of either collection will be provided and printed out upon request as needed.

Lost Items

Students will be responsible for the replacement cost, plus a \$5.00 processing charge per item, of all lost items. Items not returned by the specified cutoff date each semester (this will be posted) will be considered lost. The Financial Management Office will be sent a list of all delinquent students and the amount owed. Students will be billed by the University, and all bills must be paid at the Bursar's Office. Students will be required to present their receipt from the Bursar's Office to be reinstated to full borrowing privileges in the Learning Resource Center.

Printing and Copying

Printing from the Learning Resource Center computers and from student computers using PawPrints.

Room Reservations

The LRC maintains two flexible learning spaces and two small 3-5 person study rooms for use by labs, classes, meetings, small group meetings, guest speakers, special events etc.

Room 201 Edwards Hall (classroom) must be booked with Mandy Topper (atopper@clermson.edu) or Wendi Mattson (wmattso@clermson.edu) for student groups and study meetings.

Scanning Services

CLRC staff will assist and instruct students on how to scan graphics/documents.

Guidelines for Clinical Learning and Research Center Operations

To protect the carpet, furniture, equipment, and computers and to maintain an outstanding workspace, management has created a set of rules which must be followed by every user. Staff members are authorized to enforce the rules.

- Food and drink permitted in the LRC.
- Save your work on your own machines' hard drives.
- Respect other users and the staff at all times.
- Please keep voices low while in the LRC out of respect for fellow students who are studying, writing, and testing. Cell phones conversations should be conducted outside of the LRC.
- If you have a problem, consult the staff member on duty.
- Do not copy software from the machines. Software piracy is a crime.
- Computers and all other equipment are to be used for educational purposes only.
- Book Collection – Books are available for check-out. Books may be checked out for two weeks and are located in the floor storage unit. Reference books (in-house use only) cannot be checked out but can be used in the LRC and copied if desired and can be found in the open shelving units.
- Journals – Journal articles are for in house use and can be photocopied if desired.
- Videos – Videos are in house use only and/or for classroom use as related to class projects/assignments.
- Printing is available in the LRC through Paw Prints.
- Music, podcasts, etc. must be listened to through headphones.
- This lab is open, during indicated hours, to Faculty, Staff, and Students in the College of Behavioral, Social and Health Sciences.
- Repeated violation of these rules will result in the revoking of lab privileges.

Clinical Learning Center – Simulation Laboratory

Mission Statement

- To provide nursing students and faculty with a research oriented, state of the art, clinical practice environment.
- The CLC focus supports interdisciplinary teaching and learning of aspects of health care and advances evidenced-based scientific nursing knowledge.

Objectives

- To maintain a current state of the art environment that support clinical practice
- To support faculty by providing clinical simulation models, supplies and equipment for teaching and research activities
- To provide a positive learning environment for students supported by current clinical equipment, simulation resources, and supplies
- To maintain a clinical lab environment that simulates community healthcare facilities
- To provide learning opportunities for clinical simulation experiences utilizing SimMan, CathSim, and other simulation technology

Hours

- Office Hours: Varies per academic semester; See posted schedule
- Lab Hours: Varies per academic semester; See posted schedule

Services

- Tutor/Assist students with skill improvement
- Assistance with lab set-up and break-down
- Ordering supplies
- Coordinating laundry pick-up/delivery
- Work with faculty in organization/implementation of skill sets in various classes

Simulation Lab Agreement

- All students will be required to sign the Simulation Lab Agreement that can found at the end of this handbook.

Computer Resources

User Id's and Passwords

Please Read! Very Important!

- Passwords must be a minimum eight characters and contain one letter, one number and one special character. Passwords are not case sensitive on computers using the authentication system.
- You are required to change your password every 90 days; the computer will prompt when it is time enter a new password.
- Don't ever share your UserID and password with anyone else.
- Don't write your password down or pick a password that is easy to guess.
- **Be careful how you use your University User ID and password.**
- For further information on Password Security go to: <https://ccit.clemson.edu/test/policy/cu-it-policies/usernames-and-passwords/>

Email Forwarding

Students receive a **clemson.edu** email address as part of initial enrollment. This email is used to convey important information about coursework, etc. It is the student's responsibility to regularly check this email. Please note: As part of Clemson's new email policy, you cannot add new forwards to external accounts. Please read Clemson's electronic mail policy: <https://clemsonpub.cfmnetwork.com/B.aspx?BookId=11100&PageId=456767>

Sigma Theta Tau, Gamma Mu Chapter

Sigma Theta Tau is the international honor society of nursing with chapters at schools and colleges of nursing throughout the United States and several other countries. Gamma Mu Chapter was installed at Clemson University College of Nursing in the Spring of 1978. Its purposes are those of the international organization:

- to recognize superior achievements;
- to recognize the development of leadership qualities;
- to foster high professional standards;
- to encourage creative work;
- to strengthen commitment to the ideals and purposes of the profession.

Through the membership, Gamma Mu Chapter works to support the purposes of the society by engaging in activities which are of an educational or scientific nature and by cooperating with other chapters and the international council. At least two program meetings are held during the year, one of which consists of research presentations by nurses. Membership is an honor, designed to recognize and encourage superior scholarship and leadership. Selection is made from among students in baccalaureate or graduate programs in nursing and from among community nurse leaders with at least a bachelor's degree. Eligibility screening is carried out in January, and eligible candidates are notified directly by the Eligibility Committee. Upon acceptance and payment of the induction fee, new members are received into the Chapter each Spring.

Qualifications for Regular Membership:

- A. Candidates shall have demonstrated superior scholastic achievement, evidence of professional leadership potential and/or marked achievement in the field of nursing.
- B. Candidates shall be elected from students enrolled in:
 1. Bachelor and masters programs which have been accredited by the nationally recognized accrediting body for professional nursing, and post-masters, doctoral and post-doctoral programs.
 2. Students who have completed at least one-half of the required nursing components of the bachelor's curriculum or a minimum of one-fourth of nursing shall be eligible.
 3. Bachelor of Science Degree Program:

Students shall have a grade average of at least 3.0 on a four-point scale or its equivalent, i.e., "B" or the second highest grade of the institution as indicated by the official record of grades. Exceptions maybe made at the discretion of the chapter's Eligibility and Membership Committee when a student has a qualifying grade average in the nursing major, has demonstrated consistent progress in academic achievement, and meets to a high level the other qualifications for membership. When grade averages are not available, the use of a reliable and valid measure, such as a rating tool, shall be used to determine scholastic achievement. The number of students from any one class shall not exceed one-third of the total number expected to graduate from that class.
 4. Programs of Graduate Study:

Programs of graduate study include Master's, Post Master's, Doctoral, Post-Doctoral. Nurses matriculated for graduate study in nursing are eligible for membership if they have achieved a grade point average higher than the minimum requirement for graduation. When grade averages are not available, the use of reliable and valid measures, such as a rating tool, shall be used to determine scholastic achievement.
- C. A community nurse with a bachelors or higher degree who has demonstrated marked achievement in the field of nursing shall be eligible for membership in

any chapter.

South Carolina Student Nurses' Association (SNA) at Clemson University

All students enrolled in the School of Nursing who have not yet completed a Bachelor of Science Degree in Nursing are eligible for membership in the Student Nurses' Association. This organization serves to promote career exploration through programs featuring speakers from various specialties in nursing. It also strives to keep students informed about a variety of issues currently affecting nursing by means of program meetings and participation in the state level organization, Student Nurses' Association of South Carolina. A number of students from Clemson University have held offices in the state SNA in recent years. Membership in SNA is voluntary and can be attained upon payment of a nominal membership fee. Forms may be obtained from the SNA faculty advisor or from any SNA member.

Student Representatives on School Program Committees

In the beginning of each year, students are elected to serve as representatives of their class and cohort on the School of Nursing Program Advisory Committee. Student input is one way the faculty learns about concerns and issues in the School. It is important to elect representatives who will agree to attend designated meetings in order for this process to take place.

BS Student Program Committee: At least two students per class.

Student Class Representatives

The School of Nursing has a process of receiving student feedback through end-of-the-semester Nursing Class Representatives meetings. Each of the SON classes/cohorts select up to two representatives to gather feedback from their classmates for purposes of sharing your experience for academic quality control. Feedback can be gathered through email, Google forms, Qualtrics, or other means. At the meeting, the SON administration asks that you gather and share of the positive things you have experienced as well to identify some areas for improvement. The feedback received has promoted real changes in the past. More information will be shared in the first semester NURS courses.

SECTION V: GRADUATION INFORMATION

National Council Licensure Examination for Registered Nurses (NCLEX-RN)

All graduates of nursing programs are required to pass the NCLEX-RN in order to obtain a license to practice nursing and to use the title "R.N.". The examination is the same in each state and is offered on computer through various testing facilities in the state. Application materials are available online for each state board of nursing. Seniors in the BS-T cohort should submit the required materials to Mrs. Robin Metler-Atkinson (metler@clemson.edu) (408 Edwards Hall). Seniors in the BS-A cohort should submit required materials to Mrs. Anna Claire Butler (acbutle@clemson.edu) (461 CU Nursing), and the Seniors in the ASD cohort should submit required materials to Ms. Cynthia Mihalchick (mihalch@clemson.edu) (465 CU Nursing). Students seeking licensure outside South Carolina need to include the mailer with sufficient postage. Each Board of Nursing determines the applicant's eligibility to take NCLEX. Applicants who have any misdemeanors or criminal records should seek consultation of the Board of Nursing several months before the application deadline. All graduate nurses are personally notified of their performance on the NCLEX-RN by the State Board of Nursing in the state where they took the examination. This information is reported as either "pass" or "fail." No individual scores are given to anyone. Successful candidates are listed as registered nurses on the state board website. South Carolina is a member of the RN Compact. Nurses with a compact license may practice in any compact state. Some states, such as Georgia for example, are not members of the compact so registered nurses must obtain a Georgia license to practice in that state.

NOTE: THE INDIVIDUAL STUDENT IS RESPONSIBLE FOR COMPLETING THE APPLICATION PROCESS AND MEETING ALL DEADLINES. Practicing without a valid license is a serious offense.

Pins for Professional Convocation

Early in the semester, an information e-mail will be sent to graduating seniors, in which students will be able to order Clemson Nursing pins online. A realistic time for the students to submit their pin order is listed online, and if this date is not honored then there is no guarantee the pins can be completed on time. The School of Nursing will assist past graduates in reordering pins, if they should need to do so.

At the time of graduation, the School of Nursing holds Professional Convocation to honor its graduates and to welcome new graduates into the profession. Students completing the Master of Science degree in Nursing will receive their master's hoods as part of the ceremony. Baccalaureate graduates will receive the school pin.

Program Pin and Cap

The School of Nursing pin was designed by Dean Emerita Geraldine Labecki and the first graduating class of the Baccalaureate Degree Program in Nursing. This class consisted of three graduates who completed their course of study in 1972. You receive the School of Nursing pin at the School of Nursing Convocation. Your pin is worn as part of your official uniform whenever you are engaged in nursing practice.

- **GOLD -- Stands for worthiness**

- **BLUE -- Stands for truth and constancy**
- **THE SCROLL (BOOK) -- Symbolizes the search for knowledge based on nursing practice**
- **THE SEAL -- Is the University Seal with the state's symbol, the palmetto, in the center**

Clemson University Baccalaureate Cap

(Can be ordered through SNA). The cap was also designed by Dean Emerita Geraldine Labecki and the first graduating class of 1972.

- **The three pleats in the back represent the three graduates of this class.**
- **The University Logo in gold metal now replaces an original cloth "C.U." which was made of gold and purple thread.**
- **The Logo pin is to be worn on the left wing (corner) of the cap, 1/2 inch from the upper edge.**

School of Nursing Estimated Expenses

- PPD – Check with your doctor or clinic for cost
- BLS/CPR for Healthcare Providers - www.heart.org (American Heart Association) for cost
- Malpractice Insurance - Offered by NSO at www.NSO.com, approx. \$42
- Hepatitis B – Check with your healthcare provider for cost
- Health and Accident Insurance - Check with your family's health insurance or student health insurance for cost
- Background Check – www.SRandI.com at \$35
- Health Assessment – Check with doctor or health professional
- Transportation to and from clinical sites

Approximate Graduating Student Expenses estimates*

• NCLEX Exam Application Fee	\$200.00
• Licensure Fee (South Carolina)	\$97.00
• Criminal History Background Check (South Carolina)	\$54.25
• School of Nursing Pin (optional)	\$45.00 - \$199.00
• University Ring (optional)	\$406.18-\$1613.26
• Cap/Gown/Tassel (if ordered on time)	\$29.99+\$6 shipping fee

*Please be aware that these are the estimated costs, subject to change.

SECTION VI: STUDENT FORMS

Understanding of Alcohol and Drug Policy & Permission for Drug Screening

I have read and understand the Alcohol and Drug policy and agree to the drug screen guidelines.

I hereby release the designated testing agency and its director, Clemson University, the School of Nursing and faculty from any claim in connection with the drug screening guidelines. I understand that in the event any legal action be taken as a result of the drug screening guidelines, confidentiality may no longer be maintained. I further understand that I may be subject to drug tests while enrolled in the School of Nursing. A positive drug test or refusal to submit to testing will result in dismissal from the School of Nursing

Signature

Print Name

Date _____

Approved by SON Faculty September 2005

SCHOOL OF NURSING HANDBOOK

I have read the student handbook and understand the School of Nursing policies.

Signature

Print Name

Date _____

Nursing Student Acknowledgement of Policies and Expectations

- I must **pass all nursing and other science courses with a minimum grade of “C”** or better for progression to the next level.
- I must **maintain a grade point ratio (GPR) of 2.5** or above for my overall courses as well as my required nursing courses to remain in the nursing curriculum. If my overall GPR or Nursing GPR falls below 2.5, I will no longer be eligible to continue in the nursing curriculum.
- I must **maintain full time progress with a GPR of 2.5** or above to guarantee my space in nursing courses. Otherwise, I am not guaranteed a place in the remaining upper division nursing courses. If I am eligible to reenroll, I will be permitted to register in courses as space is available. (Students electing to study abroad for a semester during freshman or sophomore year will remain in the full-time cohort.)
- I may **repeat one nursing course only**. Withdrawing with a “W” from the course or applying Academic Forgiveness counts as an attempt. If I fail a second nursing course, I am not eligible to continue in nursing. If I earn D’s in Pathophysiology and Pharmacology, I may be eligible to retake both courses concurrently with prior approval from the School of Nursing.
- I must **pass the didactic and clinical** components to pass all clinical courses.
- A criminal background check is required before entering clinical courses and a negative result is expected. I understand that my clinical placement and/or licensure may be affected by information revealed through a criminal background check.
- I must submit to a **drug test** prior to any clinical. If I refuse to submit to drug testing, I will be dismissed from the School of Nursing. If I have a positive result on the drug test, I will be suspended from the School of Nursing. (See Undergraduate Handbook for requirements for readmission after a positive drug screen).
- I must **satisfy all clinical requirements** prior to any clinical. **If I miss the deadline, I will be dropped from clinical courses.** All documents should be submitted as a package.
- I am required to participate in the **Supplemental Testing (ST)**. I must **pass all required ST in order to progress** to the next level of courses. I will receive an **incomplete in the course in which I did not pass the ST**, which will be converted to my course grade when I have passed the ST.
- I understand that if I have been counseled or disciplined for chemical, mental or physical impairment, while in school, or ever been convicted of a crime, I may be required to report it to the State Board of Nursing when applying for licensure.
- I understand that I will have the opportunity during the sophomore 1 semester to provide a **cohort preference** to aid in determining the cohort placement for clinical courses and experience. I understand that all final decisions for cohort placement are determined by the School of Nursing.
- I understand that due to the challenging nature of the nursing program, the rigorous coursework, and the rigid curriculum path, students in need of accommodations are strongly encouraged to reach out to **Student Accessibility Services (SAS)** as soon as possible to ensure timely implementation of approved accommodations. All student accommodations are initiated through the SAS process. They are not initiated by individual departments, programs, or faculty. SAS is located on the second floor of the Academic Success Center in suite 239.
- I understand that the Nursing Undergraduate Handbook contains information for which I am held accountable and that I must review the Handbook at the beginning of each academic year. I understand that the policies set forth in the Handbook are binding and that breach of these policies can have consequences ranging from a written warning to dismissal from the program. I have read and understand this School of Nursing Contract and I agree to abide by the terms therein.

Student’s Full Name (please print)

CU ID Number

Student Signature

Date

PLEASE KEEP COPIES OF ALL HEALTH INFORMATION FOR YOUR OWN RECORDS
CLEMSON UNIVERSITY
School of Nursing
PERSONAL HEALTH HISTORY

This health information will be kept confidential and handled only by appropriate personnel in the School of Nursing.
To be completed by student. Please print or type.

Name: _____ COHORT _____

Permanent Address: _____ City _____

State _____ Zip _____ CUID# C _____ Last 5 Digits of SS _____

Date of Birth: _____ Cell Phone: _____ Alternate Phone: _____

Clemson E-mail Address: _____

Emergency Contact: _____ Relationship to contact: _____

Emergency Contact Address: _____ Phone # of contact: _____

What High School did you attend? _____

What is your city of birth and hometown? _____

General Health Information:

Date of last physical examination: _____

Any medication allergies (hyper-sensitivities, allergies, upset stomach, hives, rash, etc.):

Med: _____ Type reaction: _____ Med: _____ Type reaction: _____

Please indicate existing conditions which might impair or affect your functioning in the health care setting or the safety of patients /clients.

___ Hearing or vision impairment ___ Heart condition ___ Diabetes ___ Seizure disorder/fainting spells

___ Physical limitations ___ Latex allergy ___ Acute infection ___ Any chronic disease

___ Emotional problems ___ Other: Please specify _____

Please list any drugs (Prescription and Over-the Counter (OTC) that you use.

Name of drug: _____ Frequency of Use: _____

Name of drug: _____ Frequency of Use: _____

Name of drug: _____ Frequency of Use: _____

Simulation Lab Agreement

To maximize the value of the lab experience for all CUSON students participating in lab activities, it is essential that each student uphold the integrity of the lab experience. To achieve this, students must read and agree to the following before participating in any lab-related activity:

Content: I agree not to divulge any content covered in Sim Lab to any other student, including those in other sections of the same course or students enrolled in any nursing course. This includes but is not limited to Sim Lab manual materials, simulation scenarios, games, quizzes, skills check-off, or any other activities and content covered during time in the lab. The material is the intellectual property of Clemson University School of Nursing, and violating the confidentiality agreement constitutes a breach of the Clemson University School of Nursing's academic integrity policy and will be addressed according to policy and procedure.

Materials/Supplies: I understand that all medications and IV fluids are simulated, not for human consumption, and could cause serious harm if ingested. I understand that medical supplies like syringes, IV catheters, and sutures may be expired or intended for simulation only, and I agree to never practice on myself or another student. I agree to utilize all equipment in the simulation lab with professionalism, integrity and solely for its intended purpose. I will notify the simulation team if additional supplies are needed or if there is a problem with any equipment or supplies used in the lab. I understand equipment and supplies are the lab's property and should not be removed without permission from the simulation team and formal sign-out on the Google form. I acknowledge that I am responsible for tidying up anything used in the simulation lab space and will leave it ready for the following user.

Safety: I agree to strictly adhere to all lab safety protocols, including, but not limited to, hand hygiene, properly engaging sharp safety devices, utilizing sharps disposal, safe patient handling, infection control, and maintaining physical and psychological safety for all simulation lab occupants.

Phones: I agree to keep my phone and computer put away during the duration of my time in the Sim Lab and/or Classroom areas unless instructed otherwise by the nursing faculty. I understand that if I am instructed/permitted/allowed by faculty to use my phone and/or computer, tablet, or electronic device during lab, these devices may only be used for classroom-related activities and under no circumstances may be used to take photos or record.

Professionalism/Fidelity: Students of Clemson University School of Nursing are always expected to demonstrate professional conduct, which includes the clinical, classroom, lab, and virtual settings. I understand that the simulation lab is a clinical area and therefore requires students to comply with the Dress Code indicated in the School of Nursing Student Handbook for all lab, simulation, activities, practice, and remediation encounters. (Students should reference the handbook and/or course lead faculty for specifics of the Dress Code.)

I agree to maintain a professional bedside manner, including respectful communication, a positive attitude, and absolutely no vulgar language.

I agree to maintain simulation fidelity (the extent to which the simulation experience depicts reality) not to distract other learners or impact simulation quality.

This is in addition to the lead faculty's expectations and syllabus.

Violation of any of the above could result in lab dismissal, formal write-up, "Unsatisfactory," or other disciplinary action in accordance with the Clemson School of Nursing Student Handbook.

Student Signature _____

Date _____ Created by SON July 2023

Essential Functions for Nursing Students

ISSUE	STANDARD	EXAMPLES
Critical Thinking	Critical thinking ability sufficient for clinical judgment.	Identify cause-effect relationships; accurately calculate medication dosages. Assemble equipment in sequence for safe use; maintain aseptic environment.
Interpersonal	Interpersonal abilities sufficient to interact with individuals/groups from various social, emotional, cultural, & intellectual backgrounds.	Establish and maintain supportive relationships with patients and other health care providers.
Communication	Communication abilities sufficient for interaction in verbal and written form.	Count aloud and document sponges, instruments, sharps, etc.
Mobility	Physical abilities sufficient to move from room to room and maneuver in small spaces.	Ability to lift, position, push, or transfer patients. Move around in treatment areas; administer CPR. Push/pull or move/lift equipment/supplies (up to 25 pounds). Ability to reach, stoop, bend, kneel, and crouch. Prolonged standing/walking.
Motor Skills	Gross & fine motor abilities sufficient to provide safe & effective care.	Calibrate and use equipment; position patients; assist patients in and out of bed. Use coordinated finger and hand movements.
Hearing	Auditory ability sufficient to monitor and assess health.	Hears monitor alarm, emergency signals, auscultatory sounds, cries for help, voices under protective garb.
Visual	Near/far visual acuity. Sufficient for assessment, & implementation.	Observe patients' responses; reads patients' care plans, consents; gauges, labels, digital printouts, & computer screens.
Tactile	Tactile ability sufficient for assessment of physical health status.	Performs palpation (take a pulse & perceive temperature) &/or those related to therapeutic intervention, e.g. catheter insertion.
Smell	Olfactory senses sufficient for maintaining patient safety	Distinguish smells that are contributory to assessing and/or maintaining patient's health status, e.g. smell fire.
Self-Care	Ability to present professional appearance, maintain own health and not place patients in jeopardy.	Implement universal precautions. Use good personal hygiene
Environment	Ability to work in various health care settings.	Work in environment with temperature changes, frequent contact with liquids, sufficient noise to cause distraction, and other hazards. Implement universal precautions with variations.

Check list of Essential Functions I have reviewed and understand the minimum essential functions necessary for nursing.

Demonstration of one or more of these core standards may be required. (**please specify*)

I can meet these requirements.

I do not meet these requirements.*

I am capable of meeting these requirements with the following accommodations:*

**Critical Thinking,
Interpersonal &
Communication
Mobility &
Motor Skills
Hearing & Visual
Tactile & Smell
Self-Care
Environment**

*Indicates awareness of applicant to make appointment with Disability Services at 656-6848 (voice/TTY) if accommodations are required to meet Essential Requirements of Nursing Students. I, the undersigned, do hereby testify that I have read and understand the Essential Functions for Nursing Students required for admission to Nursing and that the above statements, as indicated, are true.

Student's Signature _____ Date _____ Telephone Number _____