

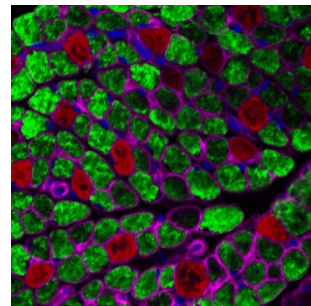


For customer or technical service, contact us:  
Clemson Light Imaging Facility  
Life Sciences Facility, Room G024  
190 Collings Street  
Clemson, SC 29634  
864.656.1264  
imaging@clemson.edu  
clemson.edu/light-imaging

## PREPARED MICROSCOPE SLIDES

Catalog No.: SL-FSM: SHEEP MUSCLE CRYOSECTION

Unit Size: Each



**Sample Description:** This prepared slide represents a single cryosection of sheep muscle tissue. It has been stained with a traditional marker for the nucleus, two antibodies that decorate two types of myosin, and an antibody that decorates laminin. The secondary antibodies exhibit peak excitation/emission wavelengths of 496/519 nm, 556/573 nm, and 632/647 nm. The nuclear stain exhibits peak excitation/emission wavelengths of 358/461 nm. The sample works well for widefield or confocal microscopy. Standard filter sets for blue/green/orange-red/far red imaging will work well for this sample. The sample was prepared in a hard mount with a refractive index of nearly 1.5.

**Storage:** We suggest storing the prepared slide in the slide holder at 4°C. Protect from prolonged exposure to light.

**Slide Use:** This slide is intended for use by technically qualified individuals with appropriate training to handle potentially hazardous materials. It is meant to be used for demonstration purposes and should not be transferred to a third party.

Sample Credit: Rhonda R. Powell<sup>1</sup>, Chad McMahan<sup>2</sup>, Susan K. Duckett<sup>3</sup>, Terri F. Bruce<sup>1</sup>

<sup>1</sup>Clemson Light Imaging Facility, Clemson University

<sup>2</sup>Department of Bioengineering, Clemson University

<sup>3</sup>Department of Animal and Veterinary Sciences, Clemson University