

# Annual Report of Activities

JANUARY 2024 - DECEMBER 2024



**COOPERATIVE EXTENSION**  
*College of Agriculture, Forestry and Life Sciences*

**THIS PAGE INTENTIONALLY LEFT BLANK.**



# Executive Summary

Sumter Stormwater Solution’s Annual Report of Activities summarizes education, involvement, and participation programming provided by Sumter Stormwater Solutions’ (SSS) community and education consortium partners. Programming activities strive to educate community members about stormwater quality and quantity and its role in the health of our local waterways. Program areas are determined by the SSS Strategic Plan, which identifies target pollutants of concern, outreach strategies, and short-term and long-term goals.

In 2024 we participated in a variety of events, including Art in the Park and Sumter’s eSTEAM festival. Carolina Clear’s new commercial and billboard campaigns launched in 2024, focusing on regular septic system maintenance (more details on page 8). City of Sumter and Sumter County have taken actions to reduce litter in Sumter, including litter clean-ups, tarp giveaways, and tire buyback programs.

## OUTREACH ACTIVITIES AND TOTAL NUMBER REACHED (*estimated*)

1. Internet: 1,389,679
2. Television: 555,727
3. Billboard: 179,977
4. Publication: 114,162
5. Outreach Materials: 1,000
6. Demonstrations sites: 3,000
7. Fairs and Festivals: 8,250
8. Trainings, presentations, contacts: 6,213
9. Public involvement: 308



**Cassie Castleberry**  
SSS Coordinator

*Cassie Castleberry has been a Clemson Extension Water Resources Agent since June 2023 and is the coordinator of Sumter Stormwater Solutions. She is a native South Carolinian and is passionate about protecting the natural resources and quality of life in Sumter and throughout the state. Cassie’s professional interests include storm water education in the classroom, wildlife/land management, and how water connects us all .*



# Table of Contents

|  |    |
|--|----|
| Executive Summary.....                                   | I  |
| Community Partners.....                                  | 1  |
| Education Partners.....                                  | 2  |
| Mission and Goals .....                                  | 3  |
| Education and Involvement Program History.....           | 4  |
| Highlight: Art in the Park/Rain Barrel Art Contest ..... | 5  |
| Highlight: Pocalla Springs Elementary School Garden..... | 6  |
| Highlight: Statewide Mass Media Campaign.....            | 7  |
| Highlight: eSTEAM .....                                  | 8  |
| Report Format .....                                      | 9  |
| Public Education: Indirect .....                         | 10 |
| Public Education: Direct .....                           | 12 |
| Public Involvement .....                                 | 16 |
| Outreach Summary .....                                   | 17 |



# Community Partners

Sumter Stormwater Solutions community partners include Sumter County and the City of Sumter. Both City and County are instrumental for prioritizing efforts, evaluating stormwater pollutants and challenges, and developing new initiatives. In addition, the communities assist with clean-ups, display stormwater information at public events, and participate in planning meetings. Their leadership and support is essential to the function and progress of this group.

## Local MS4 Consortium Representatives: 2024

| Municipality & Position  | Representative |
|--------------------------|----------------|
| <b>Sumter County</b>     |                |
| Stormwater Manager       | Alfred Conyers |
| Environmental Technician | Reggie Felder  |
|                          |                |
| <b>City of Sumter</b>    |                |
| Stormwater Manager       | Teige Elliot   |
| Engineering Associate    | Aashad Carter  |





# Education Partners

Sumter Stormwater Solutions education partners include government agencies, non-profit and community organizations and businesses who share the consortium's mission of providing education to the public on stormwater issues throughout the City and County. Each partner brings a unique skill set to the organization and enhances the variety of programs the consortium is able to offer.

## Education Partners



**COOPERATIVE EXTENSION**  
*College of Agriculture, Forestry and Life Sciences*



SC DEPARTMENT of  
**ENVIRONMENTAL SERVICES**

**POINSETT**  
STATE  PARK





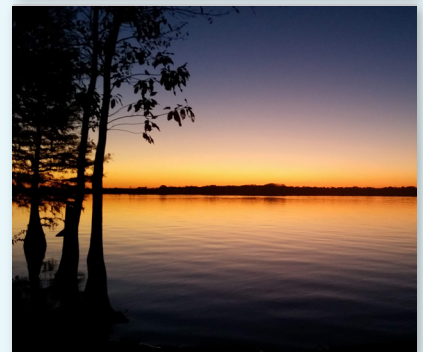
# Mission and Goals

## MISSION STATEMENT

*To enhance water resource protection and stewardship through education, public involvement and partnerships.*

## PROGRAM GOALS

- Use a watershed approach to develop and implement a comprehensive education strategy that addresses stormwater pollution using a prioritized approach capitalizing on local training resources.
- Foster and expand upon citizen involvement in stormwater management through education and participation programs to encourage behavioral change towards improved environmental protection and awareness.
- Facilitate collaboration among local organizations interested in watershed-related education to best meet the educational needs of local communities.
- Through partnerships, leverage education resources and organize outreach programs to meet the NPDES Phase II permit requirements for public stormwater education and outreach to achieve greater water resource protection.
- Participate in collaborative stormwater education that can serve as a model for others.





# Education and Involvement Program History

The Sumter Stormwater Solutions 2024-2028 Strategic Education Plan will guide the education efforts of Sumter Stormwater Solutions from January 2024 through December 2028. It was developed with input from consortium partners at a strategic planning meeting on November 29, 2023, at the Liberty Center in Sumter. Partners included city and county stormwater, wastewater, and planning staff; as well as Sumter Soil and Water Conservation District, Winyah Rivers Alliance, and Clemson Extension.

Input included prioritized lists of pollutants of concern and target behaviors. A copy of the strategic plan can be viewed on the Sumter Stormwater Solutions page at [clemson.edu/extension/carolinaclear/files/sss/sss-strategic-education-plan-2024-2029-ada.pdf](https://clemson.edu/extension/carolinaclear/files/sss/sss-strategic-education-plan-2024-2029-ada.pdf)

## Priority Pollutants of Concern (POC) and Target Behaviors identified in the Sumter Stormwater Solutions Strategic Education Plan (2024-2028)

| Pollutant of Concern | Target Behavior  |
|----------------------|--|
| Bacteria             | <ul style="list-style-type: none"> <li>Residents know how to properly maintain their septic or sewer system</li> <li>Residents and restaurants understand how to properly disposing of fats, oils, and grease (FOG)</li> </ul>   |
| Sediment             | <ul style="list-style-type: none"> <li>Construction professionals know how to properly install and maintain sediment control and erosion BMPs</li> <li>Residents and farmers have the tools and resources to implement erosion prevention practices, including riparian buffers</li> </ul> |
| Litter               | <ul style="list-style-type: none"> <li>Residents understand the impacts of local litter issues and take action to reduce litter</li> <li>Residents and community leaders are aware of litter prevention techniques</li> </ul>  |
| General Awareness    | <ul style="list-style-type: none"> <li>Adults and youth can explain how local stormwater runoff affects the larger watershed</li> <li>Residents are aware of common pollutants and pollution sources in their community</li> </ul>   |





# 2024 Highlight

## Art in the Park/Rain Barrel Art Contest



Art in the Park, a big yearly community event, was held on April 20, 2024. Leading up to this event, local schools were given the opportunity to participate in a rain barrel art contest. 5 schools took up the challenge. They were provided with all the materials to complete a fully functional, creatively painted rain barrel. Students and teachers from elementary age to high school worked diligently to complete their works of art. Upon delivering their barrels at the event that morning the necessary equipment was installed for each barrel, and they were put on display for voting.

Throughout the day people of all ages cast their votes for their favorite rain barrel for a total of 382 votes! The rain barrels sparked conversations about rainwater collection, conservation, storm water runoff, and how to use rain barrels in their own yards.

Three of the five barrels were taken back to the schools for installation in their own school garden projects while the other two were available for silent auction that day. These rain barrels brought in \$60 and provided 2 homeowners with their very own beautiful and functional rain barrel.





# 2024 Highlight

## School Garden

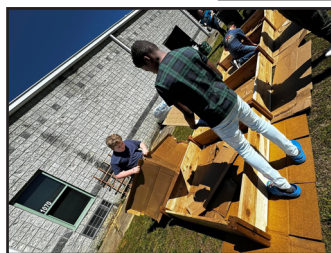
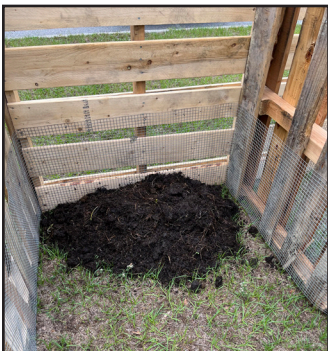
Pocalla Springs Elementary School is one of our local schools here in Sumter. They applied for and received the gardening grant through Clemson University. One of the principals reached out for support with this project. Working with Dr. Richburg, a plan was made to put the garden together with the help of the entire school (approximately 650 students from preK-5th grade, teachers, and staff).

Day one was spent prepping and assembling the garden boxes. Other garden boxes from a previous project were moved from their original spot to the new space and were positioned for their new role as a pollinator garden.

Then students and teachers took turns filling the beds with cardboard, soil, fertilizer and compost scraps from the school's kitchen.

Day two continued with students and teachers planting pollinator seeds and sweet potato slips. There were discussions on garden maintenance, the importance of pollinators, what compost can do for a garden and how composting keeps food waste out of the landfill, and how to capture rain for their garden.

A compost bin was created from the shipping pallets and rain barrels were dropped off for the students to paint. This school is a great example of wanting to learn and share how to be environmentally active.





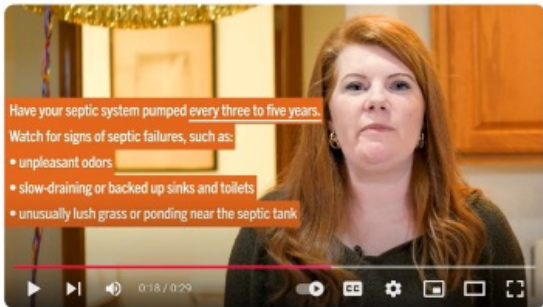
# 2024 Highlight

## Statewide: 2024-2025 Mass Media Campaign

Susan Lunt, Carolina Clear Coordinator

Clemson Extension’s Carolina Clear program 2024-2025 mass media campaign focused on regular septic system maintenance which keeps you, your family, and your community healthy. By maintaining your system you are ultimately saving money, protecting your property value, keeping your family and neighbors safe, and protecting the environment. Septic Systems that are not operating as designed and/or improperly maintained can contribute to harmful bacteria entering our watershed. Bacteria is currently the most common type of water pollution in SC, with over 300 impaired waterbodies found through the state. Waterbodies affected by bacteria pollution may be unsafe for swimming, fishing, harvesting shellfish, or supplying drinking water. Stormwater Consortiums across the State have identified bacteria in waterways as a pollutant of concern. The multi-part mass media campaign included a billboard and a television commercial; each developed by a team of Carolina Clear Extension agents and was based on feedback from regional Consortiums. Billboard messaging was provided on the target behavior “Inspect your septic system every one to two years”. Twenty-three billboards were installed around the state through a partnership with the Outdoor Advertising Association of South Carolina. These billboards impacts are documented with weekly views and had a combined total of over 2,044,913 totally weekly impressions in 2024 and documented through total impressions which reached over 13,269,871 million. Commercial messaging concentrated on the target behavior: “Pump your septic system every three to five years”. The commercial aimed to be relatable and share a clear message. The commercial was shared on five stations and streaming services around the State and reached 1,968,790 million viewers across South Carolina. To view the commercial visit: [https://www.youtube.com/watch?v=gHW\\_SPOULbc](https://www.youtube.com/watch?v=gHW_SPOULbc).

Both the billboards and the commercial directs viewers to visit [Clemson.edu/carolinaclear](https://www.clemson.edu/carolinaclear).



2024 Carolina Clear Mass Media Campaign Commercial: Septic System Maintenance

Billboards in Sumter County were located at:  
US 76/378 W, 0.2 miles W/O State Road 441  
US 76/378 W (Broad Street), 350 feet W/O Loring Mill Road



[clemson.edu/extension/carolinaclear](https://www.clemson.edu/extension/carolinaclear)





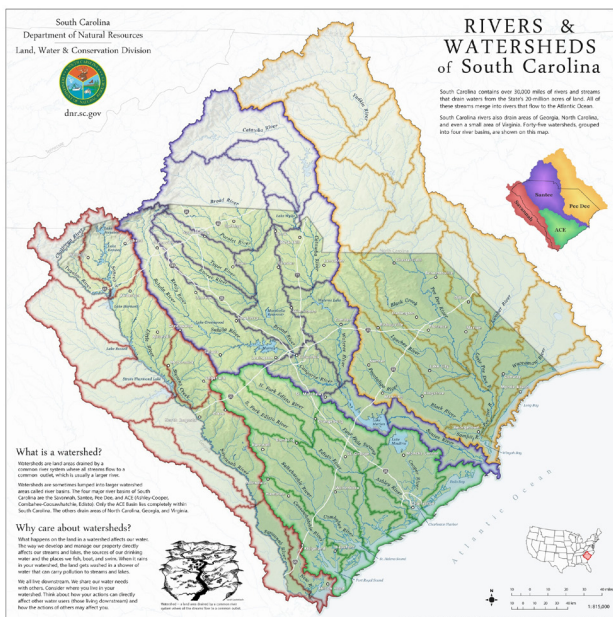
# 2024 Highlight

## October 5, 2024-Sumter's eSTEAM Festival

The 2024 eSTEAM festival provided a platform to educate the Sumter community about watersheds and how “We all live downstream.” Partnering with city and county stormwater staff, Clemson Extension was able to provide a creative activity to teach Sumter about the impacts of stormwater run-off. Located on Main Street, in downtown Sumter; the eSTEAM festival is a celebration of science, technology, engineering, art, and math that draws hundreds of local families.

At the Sumter Stormwater Solutions booth, festival attendees were taken through a demonstration of how water flows from the mountains to the ocean. Using aluminum foil, baking trays, and colored water in a bottle participants were asked to make predictions about how the water would flow in each tray. Each tray represented different parts of the state; the mountains/piedmont, the sandhills, and the coastal areas. The demonstration showed how water flows through a watershed and affects everyone. This was a great opportunity to discuss the affects of Hurricane Helene and how we all have a responsibility to be good watershed stewards and how important watersheds are to our environment. To encourage less use of single-use plastics, giveaways were offered that included reusable produce bags, reusable travel cutlery sets, reusable travel towels, chip clips and reusable shopping bags.

In addition to the demonstration activity, Clemson Extension provided educational materials for information about composting, rainwater harvesting, storm drains, and common pollutants.





# Annual Report of Activities Format

This annual report details all stormwater education, outreach, involvement, and participation activities provided by Sumter Stormwater Solutions from January 2024 to December 2024. Activities are obtained from an online database managed by Carolina Clear that consortium partners contribute to throughout the year.

Activities are divided into two categories: public education and public involvement. Public education is further broken down into direct and indirect outreach methods. Direct methods include activities that are implemented through direct contact (e.g. workshops, presentations). Indirect activities include internet, television, radio, print, and billboard activities.

For each activity, the following information is provided: lead provider, supporting partners (if applicable), date conducted, and number of impacts.

Public education activities are classified into two broad categories, **direct** and **indirect** outreach methods, to express mechanisms by which information has been communicated to the public. Direct methods include activities that are implemented via direct personal contact. Examples of direct methods include workshops, presentations, trainings, and public involvement activities. In contrast, indirect outreach methods refer to contacts through traditional media channels including television, radio, print, and billboards. Indirect methods generally reach a much greater portion of the population due to the nature of their mediums; however, it is often more difficult to gauge specific impacts. When dealing with direct methods, smaller numbers of people are reached yet the ones that are reached generally provide a forum for direct evaluation and feedback. Each method is important in the overall education campaign, and both are part of the five year educational strategy for Sumter Stormwater Solutions. Throughout the document, the words “direct” or “indirect” are provided at the top of each reporting table.

\*Data provided are as accurate as possible and are reviewed by multiple individuals involved in the reporting process. However, due to the nature of indirect outreach initiatives, indirect impact numbers are typically estimates.

The activities in the report are listed in table format.



# Public Education: Indirect

| DATE | ACTIVITY DESCRIPTION   | PARTNERS                 | NUMBER OF IMPACTS |
|------|--|--------------------------|-------------------|
| 2024 | Website: Total unique views in 2024 for the Carolina Clear, Sumter Stormwater Solutions, Carolina Yards, Stormwater Ponds, Clemson Extension Water Resources, Rain Gardens, Living Shorelines, CEPSCI, and CSPR websites   | Clemson Extension        | 97,074            |
| 2024 | Carolina Clear Youtube page provides educational videos related to stormwater.   | Clemson Extension        | 8,900             |
| 2024 | Carolina Clear Facebook page provides information on stormwater best management practices.   | Clemson Extension        | 22,700            |
| 2024 | Sumter Stormwater Solutions Facebook Page provides information on stormwater best management practices and related, local events.  | Clemson Extension        | 213               |
| 2024 | Carolina Yards Facebook page provides information to help South Carolinians conserve water and make positive changes to the environmental quality of their yards, neighborhoods, and surrounding waterways.  | Clemson Extension        | 26,237            |
| 2024 | Water quality tips and segments on <i>Making It Grow</i> television show on ETV or Facebook Live.  | Clemson Extension, SCETV | 19,866            |
| 2024 | Making It Grow! FB page (Lifetime Post Total Reach: The number of people who had your Page's post enter their screen. Posts include statuses, photos, links, videos and more)  | Clemson Extension, SCETV | 1,234,555         |
| 2024 | Factsheets located on the Clemson Home and Garden Information Center (HGIC) that have been authored by Water Resource Agents and that directly relate to stormwater education include topics on pond management, landscape-level stormwater management, vegetative buffers, low impact development, and more. The total unique views is estimated from historical data and current trends. Note: this may be an under estimate of the total impacts as this does not include factsheets on topics associated with fertilizer application, composting, native plants, and other best management practices associated with water quality. These publications can be accessed at <a href="http://hgic.clemson.edu">hgic.clemson.edu</a> | Clemson Extension        | 50,000            |



# Public Education: Indirect

| DATE         | ACTIVITY DESCRIPTION  | PARTNERS   | NUMBER OF IMPACTS |
|--------------|---|--|-------------------|
| 2024         | Land Grant Press publications authored by the Clemson Extension Water Resources Team include 31 publications since 2019. Topics include stormwater ponds, livestock ponds, recreational ponds, wetlands, aquaponics, funding, flooding, pond dredging, pond weeds, headwater streams, watershed based planning, harmful algal blooms and more. These publications can be accessed at <a href="http://lgpress.clemson.edu">lgpress.clemson.edu</a> | Clemson Extension, Carolina Clear, LGP           | 59,685            |
| 2024         | Billboard: The 2024-2025 Carolina Clear mass media campaign focused on regular septic system maintenance. Billboard messaging was provided on the target behavior “Inspect your septic system every one to two years” in high-visibility locations: US 76/378 W, 0.2 miles W/O State Road 441 and US 76/378 W (Broad Street), 350 W/O Loring Mill Road (impacts reported as total weekly impressions).  | Clemson Extension                                | 179,977           |
| 2024         | TV: The 2024-2025 Carolina Clear mass media campaign focused on regular septic system maintenance. Commercial messaging was provided on the target behavior “Pump your septic system every three to five years” (WLTX/Streaming)  | Clemson Extension                                | 412,200           |
| 2024         | Clemson newspapers (Clemson Extension offers stormwater pond preparation tips; floating wetlands bring beauty, benefits to South Carolina ponds)  | Clemson Extension, Clemson University            | 2,177             |
| 2024         | Dog waste stations: 4 at Patriot Park, 4 at Dillon Park, 5 at Palmetto Park, 2 at Live Oak Park   | Sumter County, City of Sumter                    | 3,000             |
| October 2024 | Rainwater harvesting display at Sumter County Fair, including information about protecting water quality in the home landscape  | Master Gardeners, Clemson Extension              | 350               |
| 2024         | Outreach materials (rack cards, manuals, fact sheets) and promotional materials (reusable produce bags, grocery bags, and travel utensil sets, FOG lids, dog waste bags)  | Clemson Extension, PalmettoPride                 | 1,000             |
| 2024         | Publication: Taking Care of Business: A User’s Guide For Being Septic Safe  | Clemson Extension, Carolina Clear                | 2,300             |
| 10/5/2024    | eSTEAM Sumter: Participants learned about stormwater runoff within our watershed, composting, rainwater harvesting, litter prevention, and stormdrain education.  | City of Sumter, Sumter County, Clemson Extension | 7,500             |
| 4/20/2024    | Art in the Park: Displays about rainwater harvesting and other practices to protect water quality. See pg 5 for more details.   | Clemson Extension                                | 400               |



# Public Education: Direct

| DATE   | ACTIVITY DESCRIPTION  | PARTNERS  | NUMBER OF IMPACTS |
|--|---|---|-------------------|
| 2024   | Carolina Yards Online Course was developed to assist and guide South Carolina homeowners in conserving water in the landscape and making positive changes in the environmental quality of their yards, neighborhoods, and surrounding waterways by implementing and maintaining low impact and low maintenance yard practices.  | Clemson Extension                                   | 30                |
| 2024   | CSPR Course: Clemson provides training and certification through the Certified Stormwater Plan Reviewer (CSPR) program to educate personnel on the proper design and review of stormwater and sediment control plans for development sites in order to meet regulator and environmental requirements. Impacts reflect statewide trainings. Certifications and recertifications were offered as online and in-person formats.  | Clemson Extension, Clemson University, SCDES        | 59                |
| 2024   | CEPSCI Course: Clemson provides training and certification through the Certified Erosion Prevention and Sediment Control Inspector (CEPSCI) program to assist in pollution prevention control on construction projects. Impacts reflect statewide trainings. Certifications and recertifications were offered as online and in-person formats.  | Clemson Extension, Clemson University, SCDES, SCDOT | 1,295             |
| Fall 2024  | The Master Pond Manager (MPM) course teaches recreation and stormwater pond management, training participants through online classroom and field-based curriculum; it was offered in the fall, with field days hosted in Clemson, SC on 10/23-24.   | Clemson Extension                                   | 47                |
| 5/13/2024-7/12/2024, 10/21/2024-12/20/2024, 10/28/2024-12/6/2024 | Post-Construction BMP Inspector certification and re-certification hybrid courses include online and field-based training focused on inspection and maintenance of best management practices used for stormwater management; the certification course was offered in the spring, with the field day held on June 25 in Clemson, SC, and both the certification and re-certification courses were offered in the fall with the field days held on December 5 and 6 in North Charleston, SC: a total of 67 individuals were certified and 32 were re-certified. | Clemson Extension                                   | 99                |
| 2024   | Master Rain Gardener: an online and field based training focused on rain garden and rainwater harvesting system design and implementation; online classroom was held, with field days in October in Mount Pleasant, SC.   | Clemson Extension                                   | 63                |





# Public Education: Direct

| DATE                                 | ACTIVITY DESCRIPTION  | PARTNERS   | NUMBER OF IMPACTS |
|--------------------------------------|---|--|-------------------|
| 2024                                 | In-Person, Phone, Email: Clemson Extension Agents answered questions and provided services to a variety of Sumter County audiences regarding water resources and stormwater-related best management practices | Clemson Extension  | 68                |
| 2024                                 | Soil and Water Samples: Clemson Extension, in cooperation with Clemson's Agricultural Service Lab, processed soil and water samples for Sumter County residents and commercial audiences                      | Clemson Extension  | 582               |
| 1/1/2024,<br>3/23/2404,<br>5/11/2024 | Poinsett's Elemental Adventure Series: a 4-part series started in October 2024 that focused on educational activities related to earth, air, fire, and water.   | Clemson Extension, Poinsett State Park, SSWCD, CCTC, Sumter Fire Department  | 150               |
| 5/20/2024                            | Feral Hog Lesson: the impacts to farmers and waterways  | Clemson Extension, Liberty STEAM Charter School, City of Sumter, SSWCD, CCTC | 15                |
| 6/13/2024                            | Barrels & Beer: paint your own rain barrel for home installation.   | Clemson Extension, SSWCD, CSWCD  | 12                |
| 6/17/2024,<br>6/18/2024              | Water Camp: all about water resources for students in k-4   | Clemson Extension, Liberty STEAM Charter School                              | 53                |
| 10/5/2024                            | eSTEAM table: watershed demonstration   | Clemson Extension, SSS   | 250               |
| 11/7/24                              | Compost Lessons: all about the impacts of composting for students k-2   | Clemson Extension, CCTC, Jackson Elementary School                           | 80                |
| 11/10/2024                           | Congaree Land Trust Conservation Celebration at Sans Souci Farm.  | Clemson Extension, CCTC  | 75                |
| 2024                                 | Pee Dee Rain Barrel & Compost Bin sale  | Clemson Extension, Rainwater Solutions, Carolina Clear                       | 48                |
| 2024                                 | Lessons taught in schools and at the Sumter library related to importance of food sources and how to be a good steward of our natural resources.  | Sumter Soil and Water Conservation District                                  | 360 students      |



# Public Education: Direct

| DATE     | ACTIVITY DESCRIPTION   | PARTNERS   | NUMBER OF IMPACTS |
|----------|--|--|-------------------|
| 2024     | Dam Ownership in South Carolina Course is an on-demand online course to assist dam owners and/or operator with understanding the basic concepts to protect the integrity and benefit of dams   | Clemson Extension, SCDES, Natural Resources Conservation Service | 35                |
| 2024     | Seasonal Pond Management in the Upstate is an online, asynchronous course, providing information about how to manage recreational ponds in South Carolina  | Clemson Extension, Carolina Clear                                | 15                |
| 2024     | Be Well Informed is an on-demand online course that provides information for people relying on private drinking water wells including a basic introduction to groundwater, well components, well maintenance, and relevant water quality issues  | Clemson Extension, Carolina Clear                                | 115               |
| 2024     | Living Shorelines is an on-demand online course that shares how this is a powerful tool to proactively protect estuarine shorelines and prevent erosion along residential and commercial properties  | Clemson Extension, Carolina Clear                                | 75                |
| 2024     | South Carolina Certified Landscape Professional Course is an online, self-paced course designed to provide a basic working knowledge of sound horticultural and landscaping practices  | Clemson Extension  | 53                |
| 2024     | Master Tree Farmer is a "hybrid" course combining online and face-to-face learning where participants learn scientific and practical knowledge to manage forested land to best suit ecological, economical, and recreational forest resources  | Clemson Extension  | 67                |
| 2024     | Master Naturalist program aims to turn out volunteer citizen scientists who can positively impact the natural resources of the state   | Clemson Extension  | 101               |
| 2024     | Backyard Wildlife Habitat Short Course teaches participants the basic principles of creating and establishing a wildlife habitat in their own backyard; and covers topics that include the basic needs for your garden, food, shelter, water, and space requirements for attracting wildlife | Clemson Extension  | 345               |
| 3/6/2024 | On Farm Water Management Workshop for New & Beginning Farmers in Blackville, SC  | Clemson Extension, Carolina Clear                                | 15                |



# Public Education: Direct

| DATE          | ACTIVITY DESCRIPTION   | PARTNERS  | NUMBER OF IMPACTS |
|---------------|--|---|-------------------|
| 4/6/24        | Association of Natural Resource Extension Professionals<br>Poster: Singing In The Rain in Hershey, PA  | Clemson Extension,<br>Carolina Clear  | 300               |
| 5/13/24       | National Health Outreach & Engagement Conference<br>Poster: Be Septic Safe in Greenville, SC   | Clemson Extension,<br>Carolina Clear  | 300               |
| 5/15/24       | South Carolina Association of County Agricultural Agents<br>Poster: Singing In The Rain in Beaufort, SC  | Clemson Extension,<br>Carolina Clear  | 120               |
| 5/17/24       | South Carolina Association of County Agricultural Agents<br>Lightening Talk: Natural Resources Team in Beaufort, SC  | Clemson Extension,<br>Carolina Clear  | 120               |
| 6/6/24        | South Carolina Association of Storm Water Managers<br>Septic Panel Discussion in Columbia, SC  | Clemson Extension,<br>Carolina Clear  | 130               |
| 7/14-19/2024  | Poster: Singing in the Rain: Embracing the Hybrid Method for Rain Garden Education. NACAA Conference in Dallas, TX   | Clemson Extension,<br>Carolina Clear  | 400               |
| 9/5/2024      | Clemson Extension Exhibitor Table. South Carolina Association of Stormwater Managers Meeting. Columbia, SC. Outreach materials & giveaways- 25 Rainwater Harvesting manuals from Sumter Stormwater Solutions.            | Clemson Extension,<br>Carolina Clear  | 125               |
| 10/16-17/2024 | South Carolina Water Resources Conference in Columbia, SC (Presentations/Posters: Be Septic Safe, Rain Gardens As A Wildlife Habitat, On-Farm Water Management)  | Clemson Extension,<br>Carolina Clear  | 286               |
| 11/7/2024     | South Carolina Association of Storm Water Managers<br>Presentation:Low Impact Development for Residential Properties in Columbia, SC   | Clemson Extension,<br>Carolina Clear  | 130               |
| 2024          | Salt Marsh Course is an on-demand online course that teaches about ecosystems, threats & stressors, flora & fauna, oysters, stewardship, and provides additional resources related to salt marshes                       | Clemson Extension, SC<br>Department of Natural Resources, SC Sea Grant Consortium, NOAA | 175               |
| 2024          | Landscape Design Workshop at the South Carolina Botanical Garden in partnership with Clemson Extension is an immersive experience where participants gained valuable knowledge and hands-on practice in landscape design | Clemson Extension, SC<br>Botanical Gardens  | 20                |



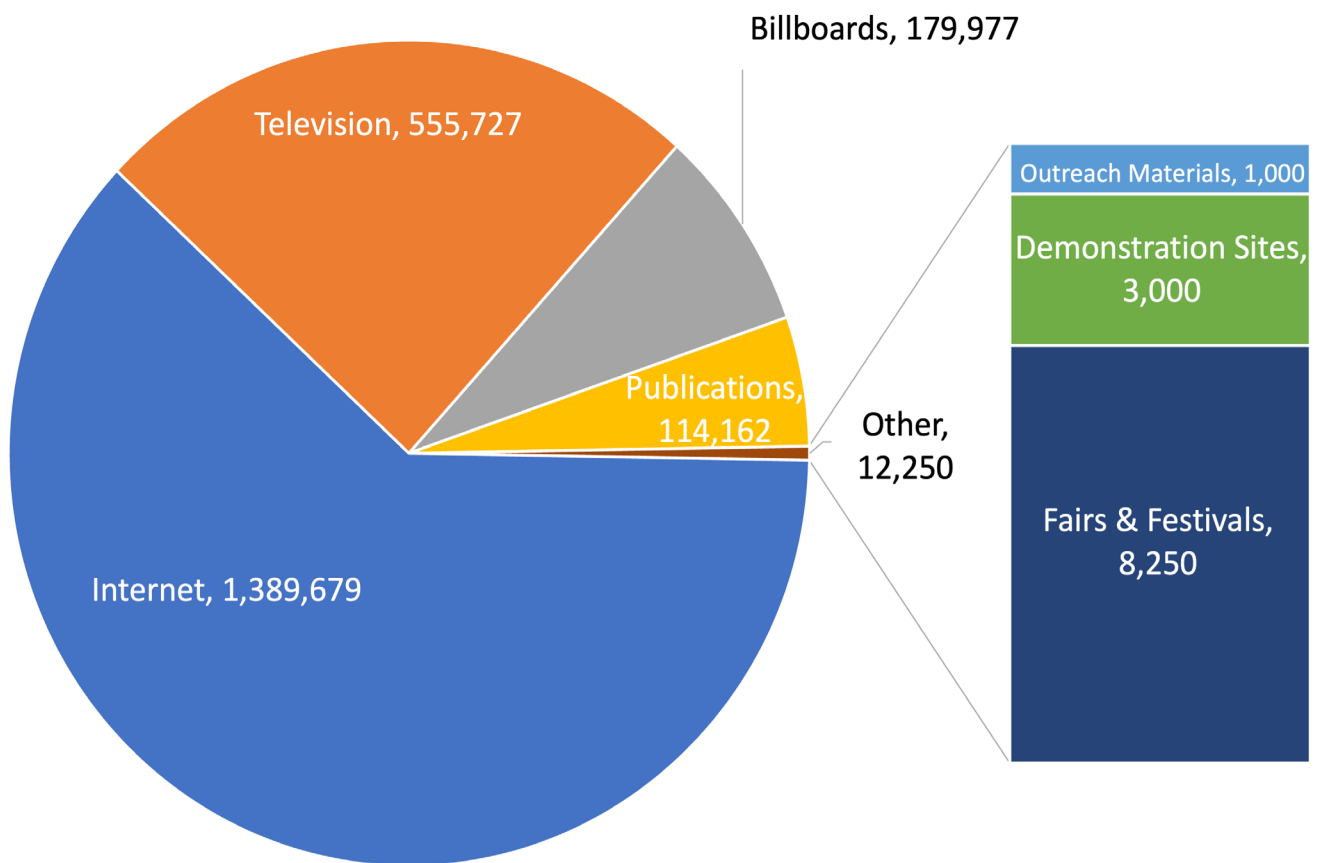
# Public Involvement

| DATE                    | ACTIVITY DESCRIPTION  | PARTNERS   | NUMBER OF IMPACTS                      |
|-------------------------|---|--|--|
| 2024                    | Certified Carolina Yards<br>Individuals putting Carolina Yards behaviors into practice in their own yards can have a certified Carolina Yard<br>*Statewide  | Clemson Extension  | 58                                     |
| 2024                    | Sumter County hosted 31 litter clean-up days and 11 school visits. Total weight includes litter bags, debris cleaned along roads, and litter rake pick-ups.   | Sumter County, Sumter Litter Advisory Board              | 124,630 lbs collected                  |
| 4/13/2024,<br>8/21/2024 | City of Sumter Tire Buy-Back event  | City of Sumter, Continental Tire, Sumter County          | 2,500 tires collected                  |
| 2024                    | City of Sumter hosted 54 litter clean-up days for a total of 1,409 hours. Total weight includes litter bags, debris cleaned along roads (including tires, TVs, and mattresses), and litter rake pick-ups. | City of Sumter, Palmetto Pride                           | 2,374 bags, 63,010 total lbs collected |
| 2024                    | Local farms utilized the no-till drill loaned out by Sumter Soil and Water Conservation District  | Sumter Soil and Water Conservation District              | 14 producers, 322.78 acres             |
| 2024                    | Local environmental stakeholders met to address resource concerns in Sumter County. Participants included government agencies, local farmers, residents, and educators                                    | Sumter Soil and Conservation District, Clemson Extension | 31 participants                        |



# Outreach Summary

Total impacts for 2024: 2,258,316 individuals.

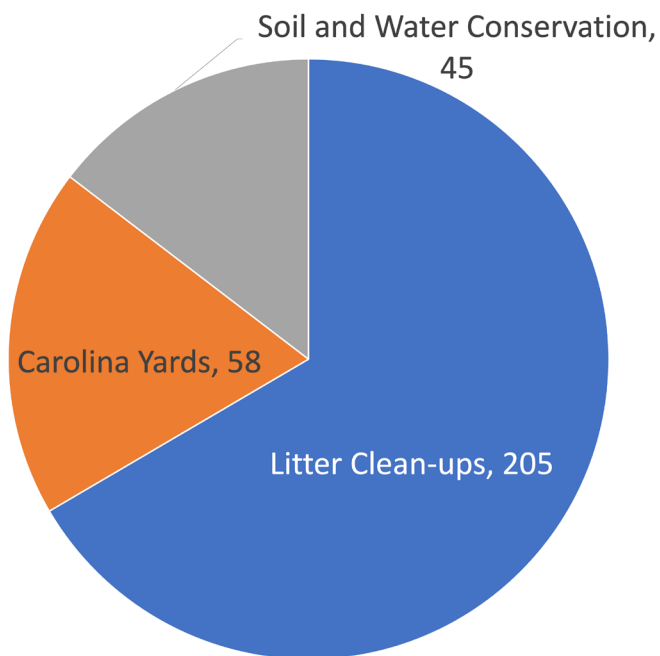
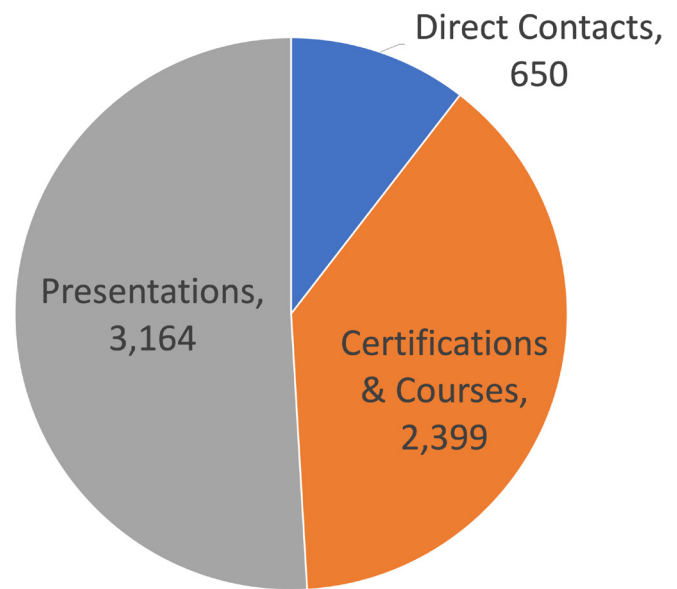


INDIRECT METHODS SUMMARY,  
TOTAL ESTIMATED IMPACTS: 2,251,795



# Outreach Summary

**DIRECT METHODS SUMMARY,  
TOTAL ESTIMATED IMPACTS: 6,213**



**PUBLIC INVOLVEMENT SUMMARY,  
TOTAL ESTIMATED IMPACTS: 308**



# Prepared By:

## AUTHOR

**CASSIE CASTLEBERRY**

SSS Coordinator

Water Resources Agent

Clemson University Cooperative Extension Service

123 E Liberty St, Sumter, SC

O: 803-848-8166

C: 803-236-4252

castleb@clemson.edu

**SPECIAL THANKS TO CONSORTIUM PARTNERS AND EXTENSION EMPLOYEES WHO CONTRIBUTED PHOTOS AND DATA FOR THIS REPORT**



*Carolina Clear is a program of the Clemson University Cooperative Extension Service. Information is provided by Faculty and Cooperative Extension Agents. Clemson University Cooperative Extension Service offers its programs to people of all ages, regardless of race, color, gender, religion, national origin, disability, political beliefs, sexual orientation, gender identity, marital or family status and is an equal opportunity employer.*



**COOPERATIVE EXTENSION**  
*College of Agriculture, Forestry and Life Sciences*



**Carolina**  
**CLEAR**  
by Clemson Extension

[www.clemson.edu/extension](http://www.clemson.edu/extension)