

# Clemson University Plant Problem Clinic, Nematode Assay Lab and Molecular Plant Pathogen Detection Lab

## Annual Report for 2012

The Plant Problem Clinic serves the people of South Carolina as a multidisciplinary lab that provides diagnoses of plant diseases and identifications of weeds and insect pests of plants and structures. The Nematode Assay Lab, located within the Department of Entomology, Soils and Plant Sciences, assists with this effort by identifying plant parasitic nematodes in soil samples sent through the Clinic. Plant pathogens, insect pests and weeds can significantly reduce plant growth and development. Household insects can infest our food and cause structural damage to our homes. The Plant Problem Clinic addresses these problems by providing identifications, followed by management recommendations.

As a part of the Department of Plant Industry in Regulatory Services, the Plant Problem Clinic also helps to detect and document new plant pests and diseases in South Carolina and serves as an information resource for Clemson University Extension, teaching, regulatory and research personnel.

In 2012, the Plant Problem Clinic received 1366 samples. The continued success of the Plant Problem Clinic could only be accomplished through the cooperation of numerous individuals in various disciplinary areas across the Clemson University system. In 2012, 26 people from 9 disciplinary areas contributed by identifying diseases, insects or plants or by providing management recommendations. Appreciation is expressed to all faculty and staff that contributed their time and effort, enhancing the success of the Plant Problem Clinic.

Much gratitude goes out to the core lab staff, who provided much needed assistance. Lab Coordinator Diana Low performed both lab and office duties while using her organizational skills to keep things running smoothly. Curt Colburn, the Molecular Biologist in charge of the Molecular Plant Pathogen Detection Lab, assisted the Plant Problem Clinic by doing bacterial identifications, plus PCR reactions and ELISA tests in some cases. Special thanks are also extended to other primary identifiers: Entomologist Tim Drake, Botanist Dixie Damrel and Mycologist Julia Kerrigan. Appreciation is also extended to Sarah Morrison, a Biological Sciences student who provided summer assistance in the lab, and also filled in by identifying a few plant samples while Dixie was away.

The Nematode Assay Lab received 2249 samples during calendar year 2012. The Nematode Assay Lab is now reporting from PDIS, the database and reporting system used by the Plant Problem Clinic. Dr. Paula Agudelo and her technician, David Harshman, assisted with this transition, which will make sample login, data entry and reporting easier.

The Molecular Plant Pathogen Detection Lab processed 143 samples. Most of these were submitted by Department of Plant Industry Regulatory Inspectors for surveys to detect regulated pathogens. However, some came from another state for regulated pathogen tests and some others were performed to clear plant materials for shipment by a private greenhouse operation.

Meg Williamson, Diagnostician

## **Diagnostic Inputs**

Primary identifiers Providing  
Diagnoses/Identifications for the Clinic in 2012

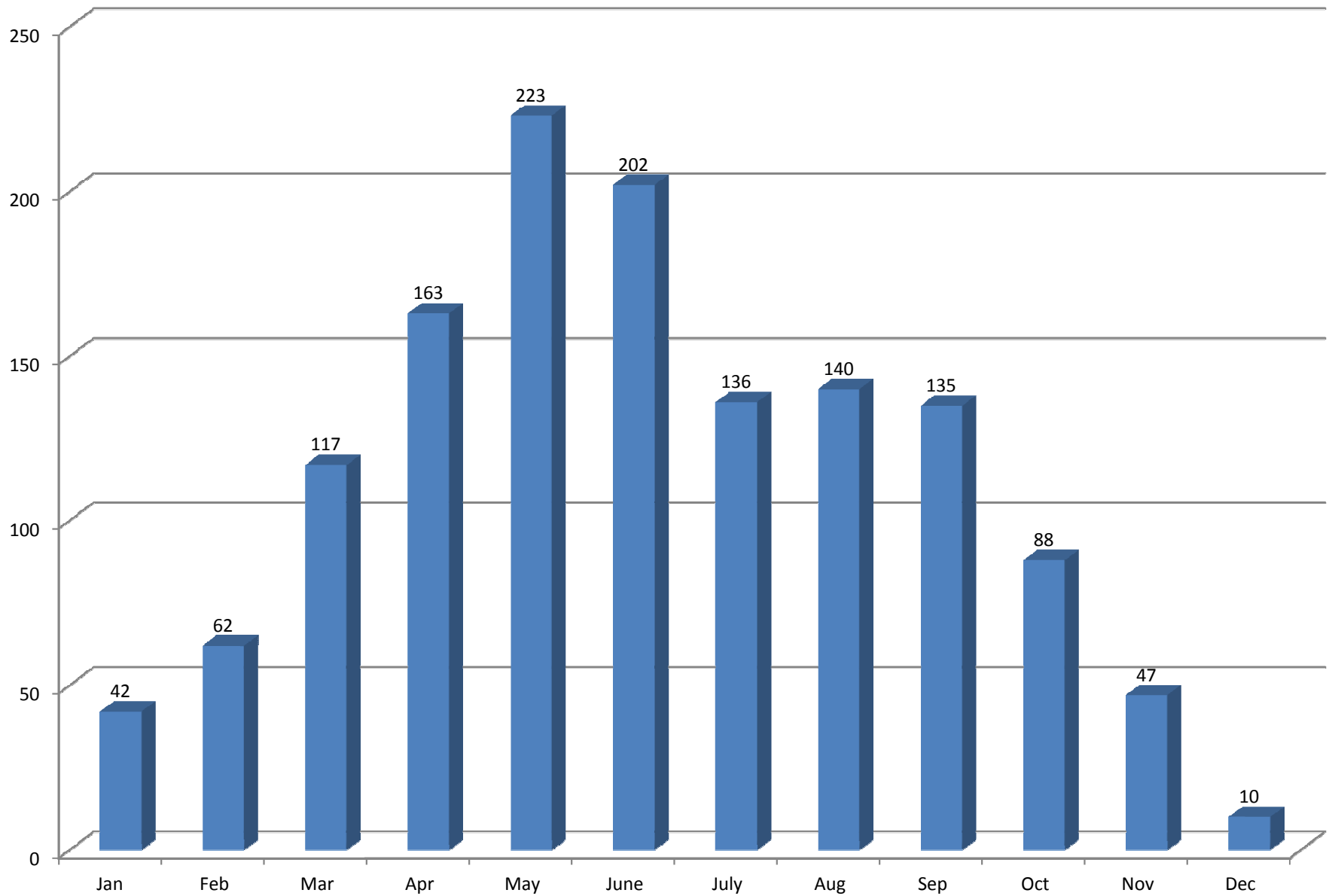
Curt Colburn, diagnosed 7 samples.  
Dixie Damrel diagnosed 90 samples.  
Julia Kerrigan diagnosed 8 samples.  
Lola Fernandez Ortuno diagnosed 1 sample.  
Meg Williamson diagnosed 1137 samples.  
Sally Brock diagnosed 3 samples.  
Sarah Morrison diagnosed 2 samples.  
Tim Drake diagnosed 183 samples.

## **Consultant Inputs**

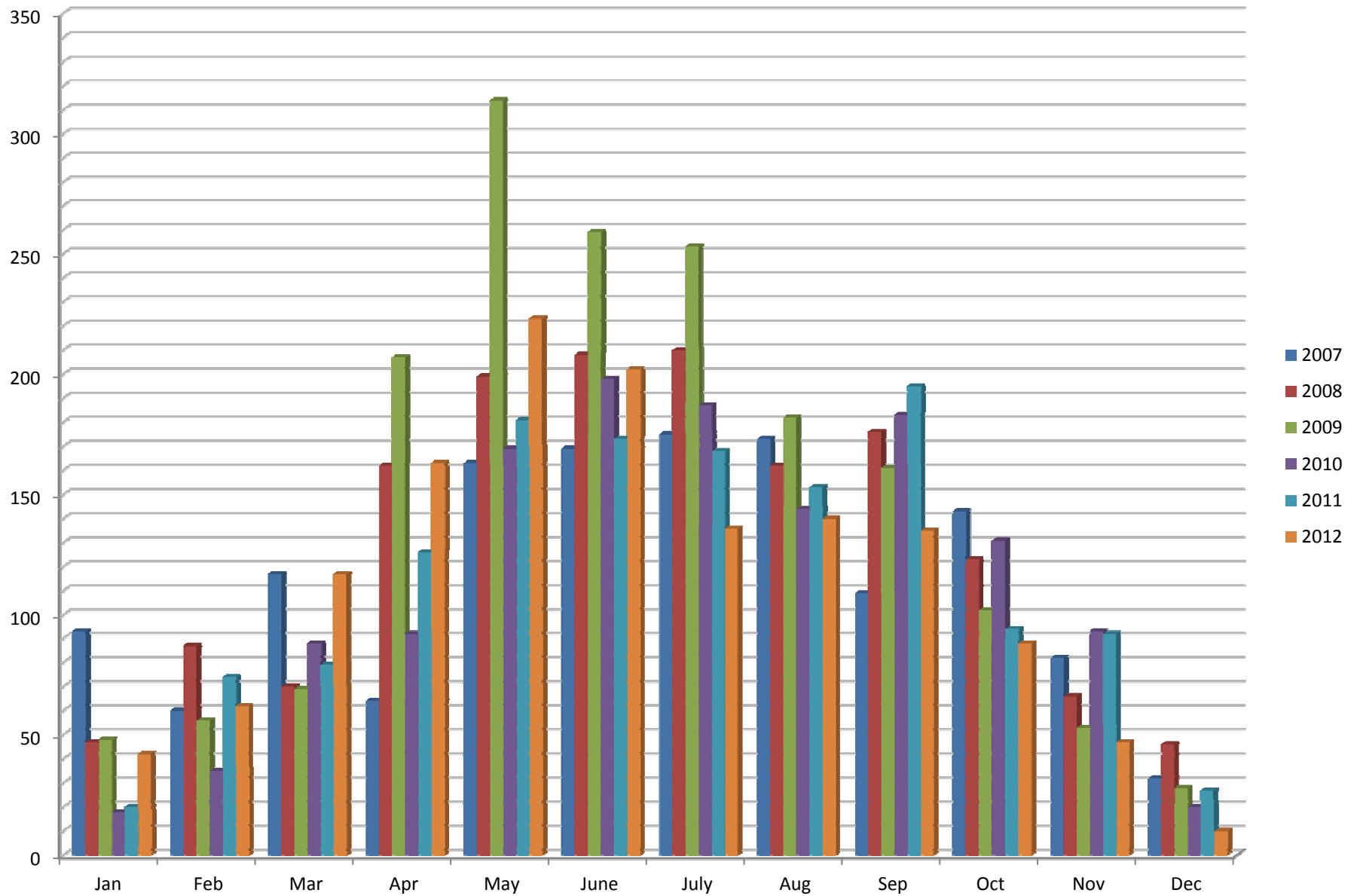
Advisory Consultants Providing Management  
Recommendations for the Clinic during 2012.

Bert McCarty gave advice for 4 samples.  
Bob Polomski gave advice for 34 samples.  
Bruce Martin gave advice for 1 sample.  
Corey Heaton gave advice for 10 samples.  
Desmond Layne gave advice for 1 sample.  
Eric Benson gave advice for 71 samples.  
Jim Faust gave advice for 1 sample.  
Joey Williamson gave advice for 37 samples.  
John Andrae gave advice for 4 samples.  
John Hains gave advice for 1 sample.  
Jonathan Schultheis gave advice for 1 sample.  
Juang-Horng 'JC' Chong gave advice for 12 samples.  
Mike Marshall, gave advice for 17 samples.  
Powell Smith gave advice for 2 samples.  
Richard Hassell gave advice for 1 sample.  
Steve Jeffers gave advice for 2 samples.  
Vic Shelburne gave advice for 1 sample.  
Wayne Mitchem gave advice for 1 sample.

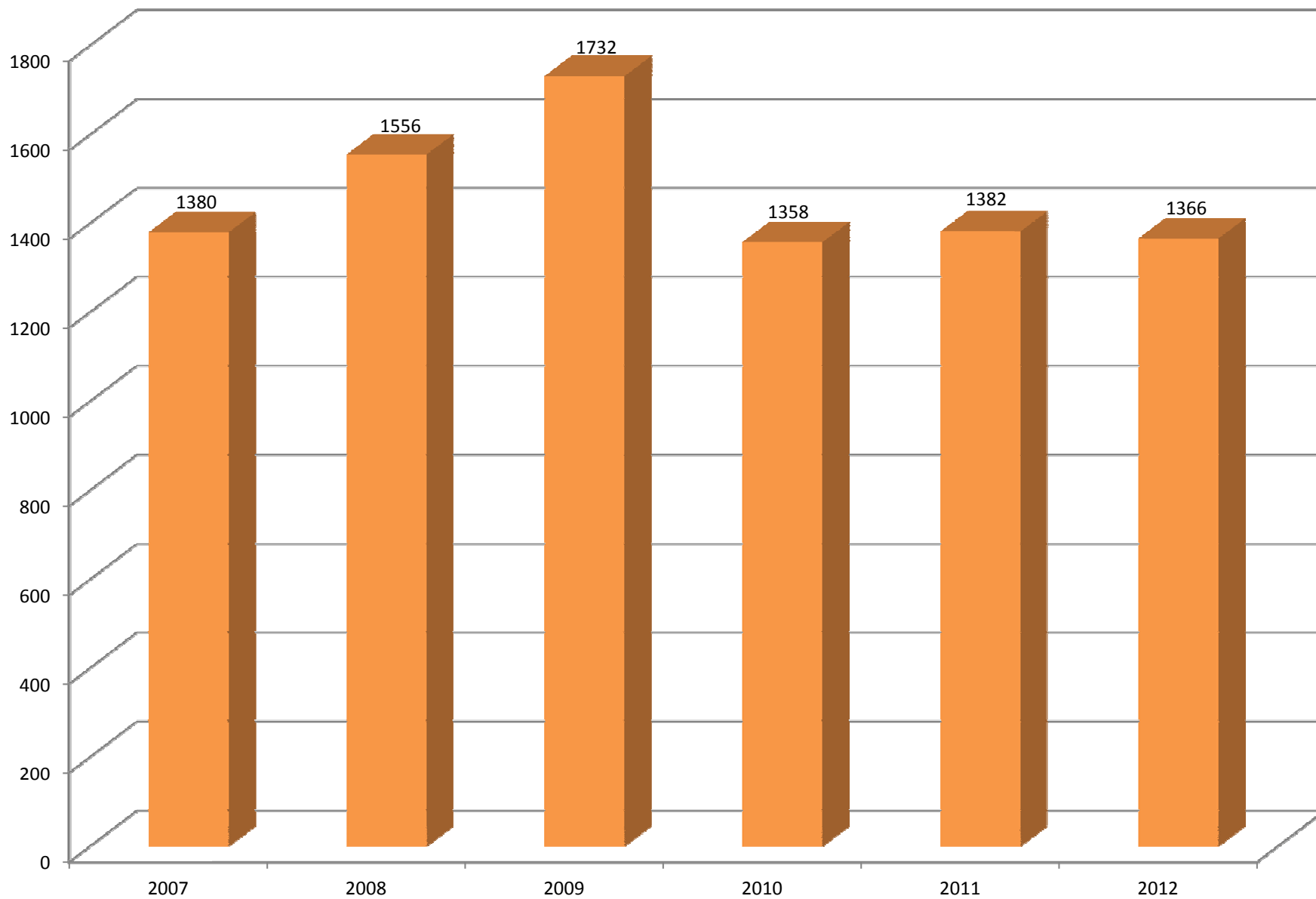
## Plant Problem Clinic Monthly Sample Numbers for 2012



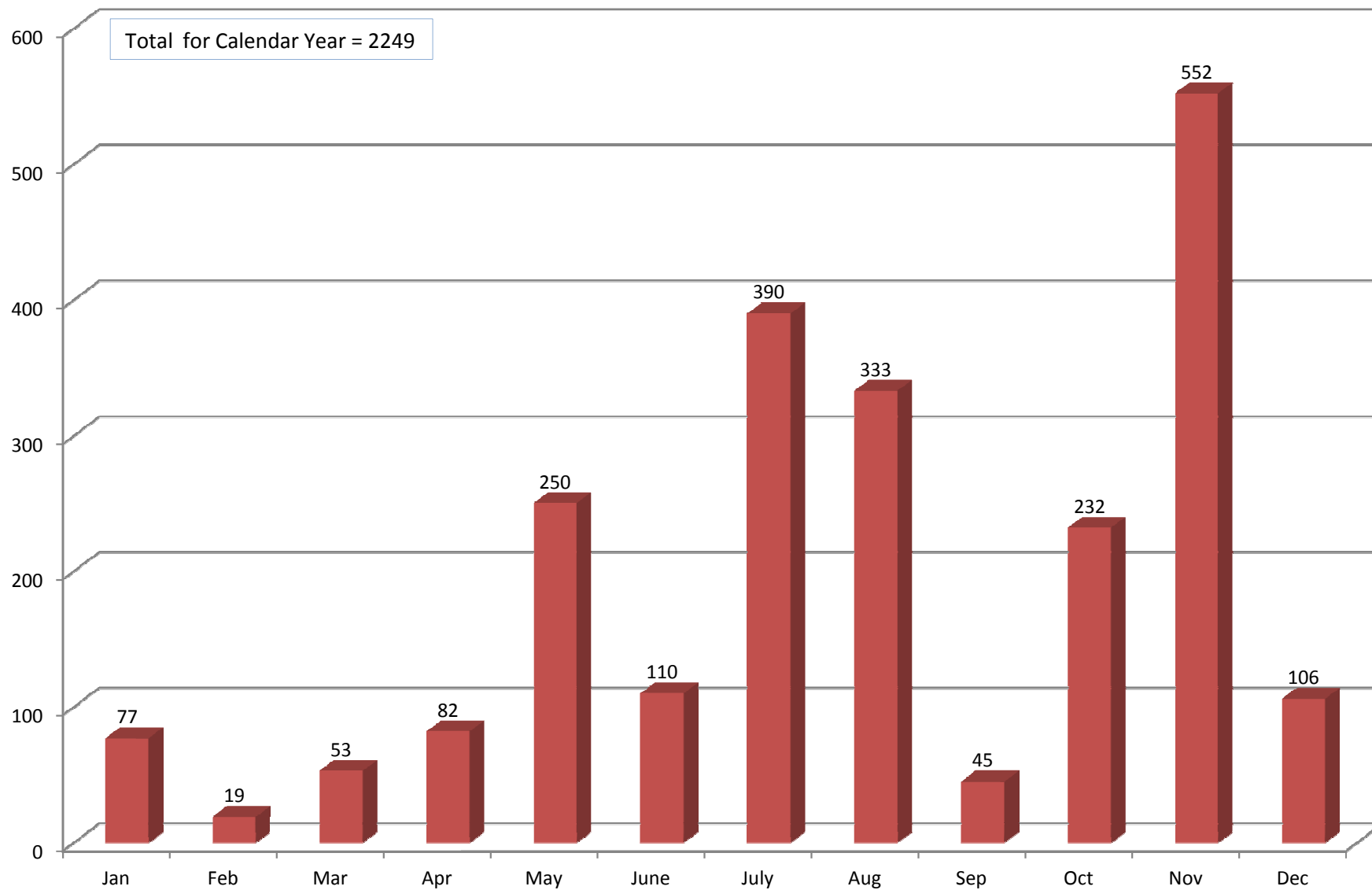
## Plant Problem Clinic Monthly Sample Numbers 2007 - 2012



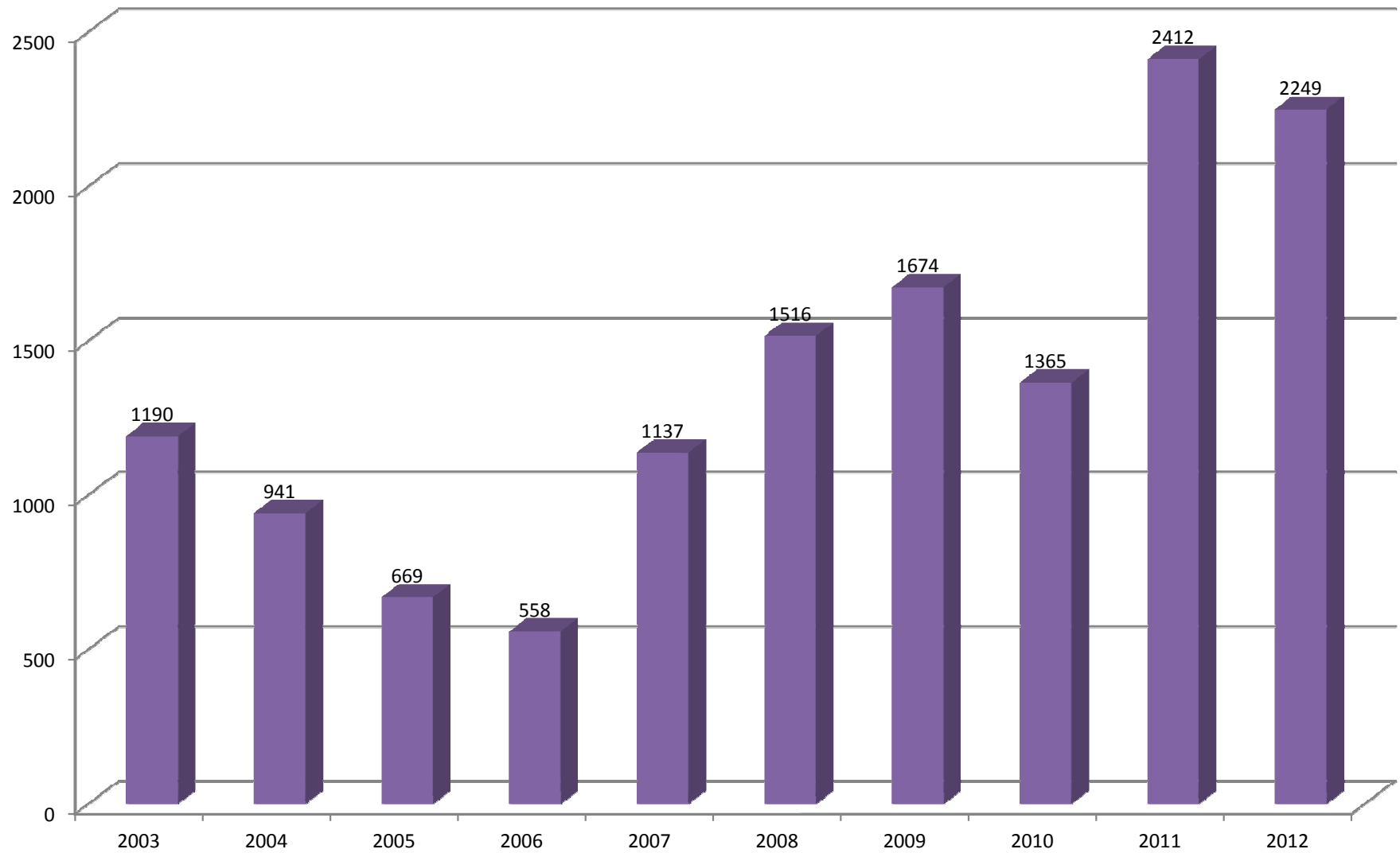
## Plant Problem Clinic Yearly Sample Numbers 2007 -2012



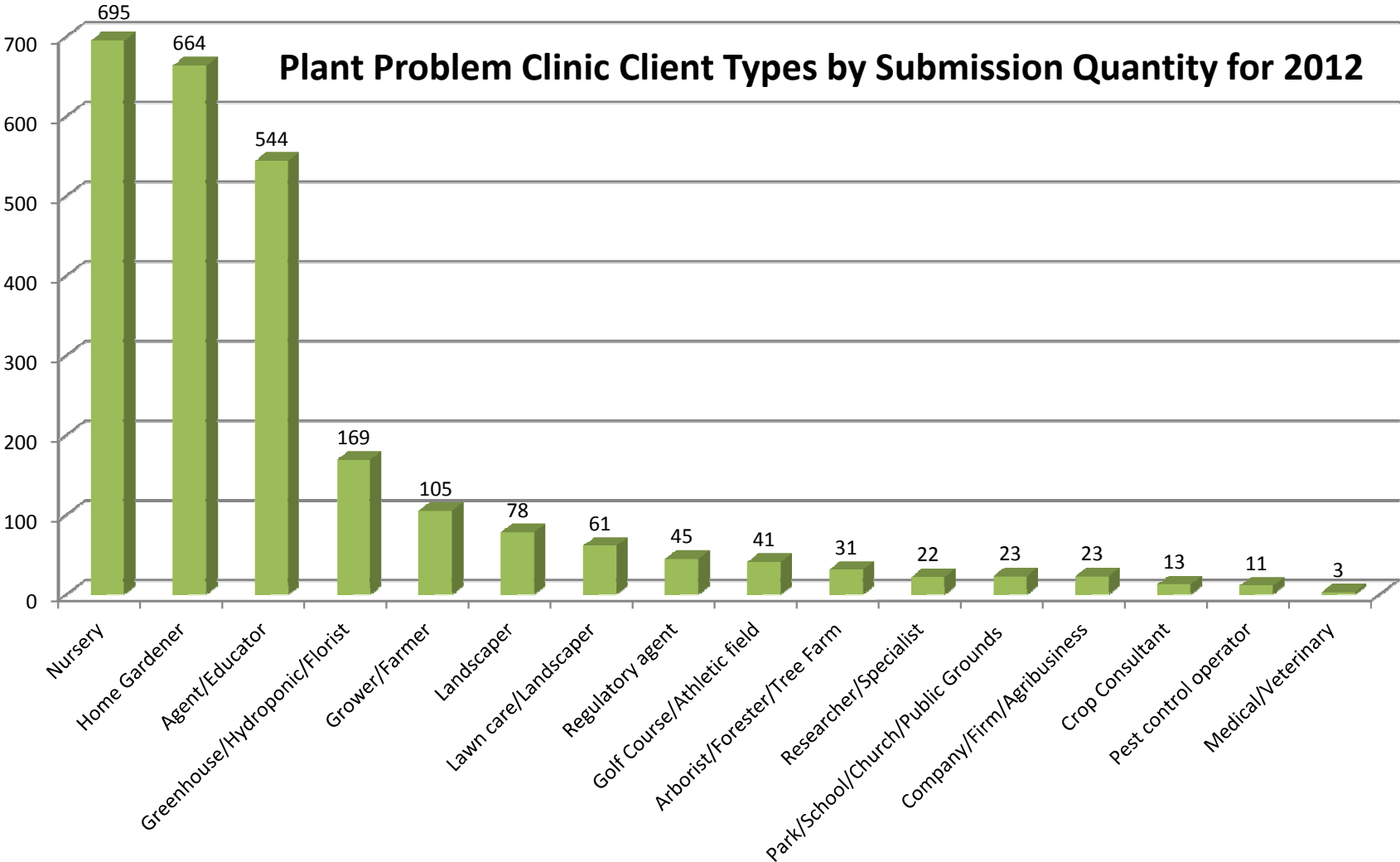
## Monthly Samples Received in 2012 by the Clemson University Nematode Assay Lab



## Samples Received by the Clemson University Nematode Assay Lab over the past 10 years

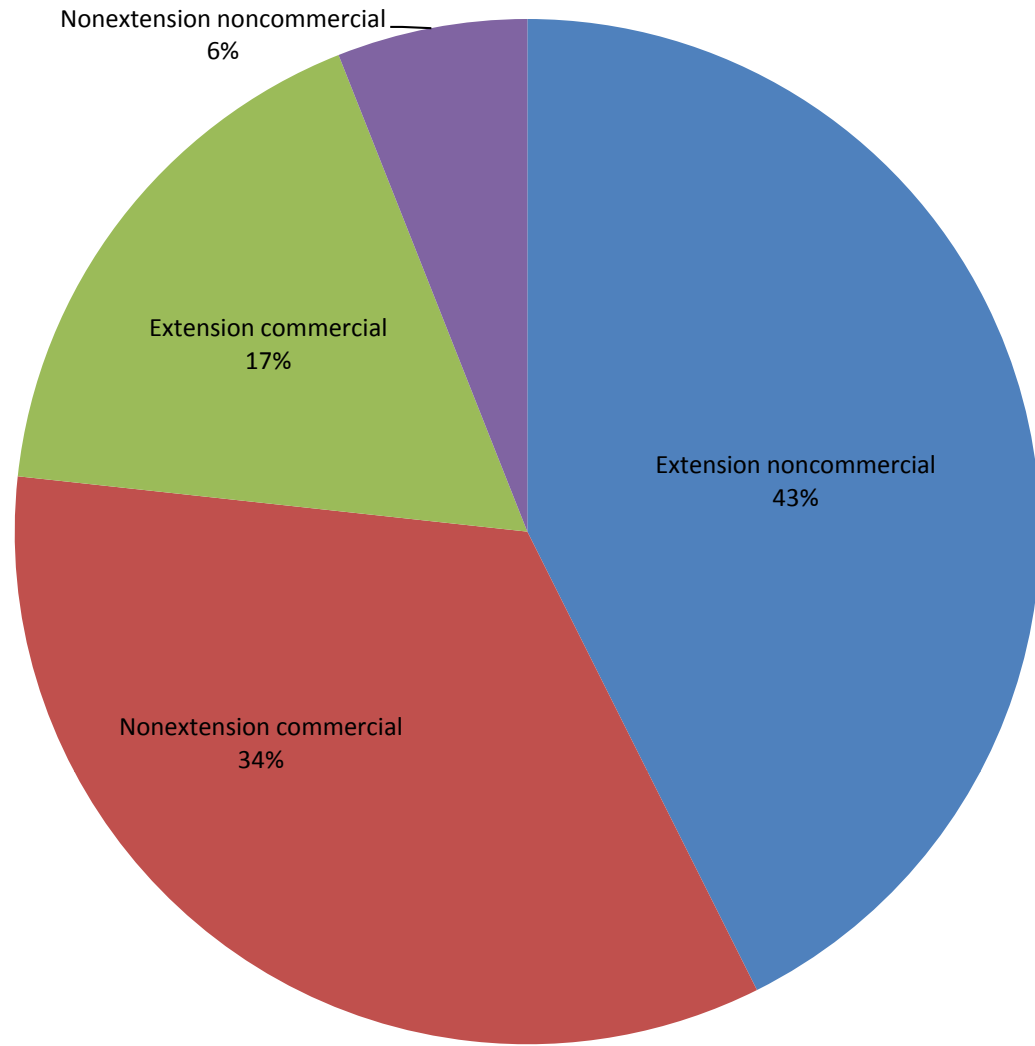


**Plant Problem Clinic Client Types by Submission Quantity for 2012**

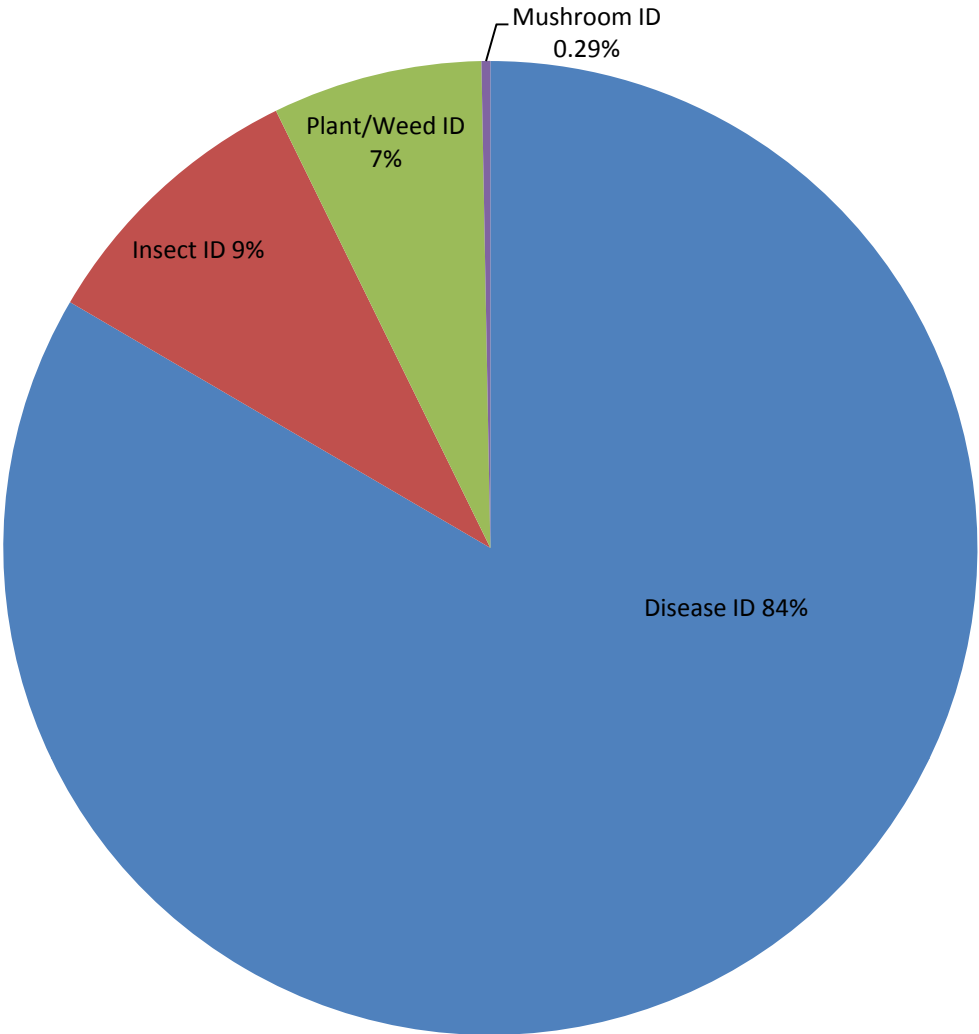




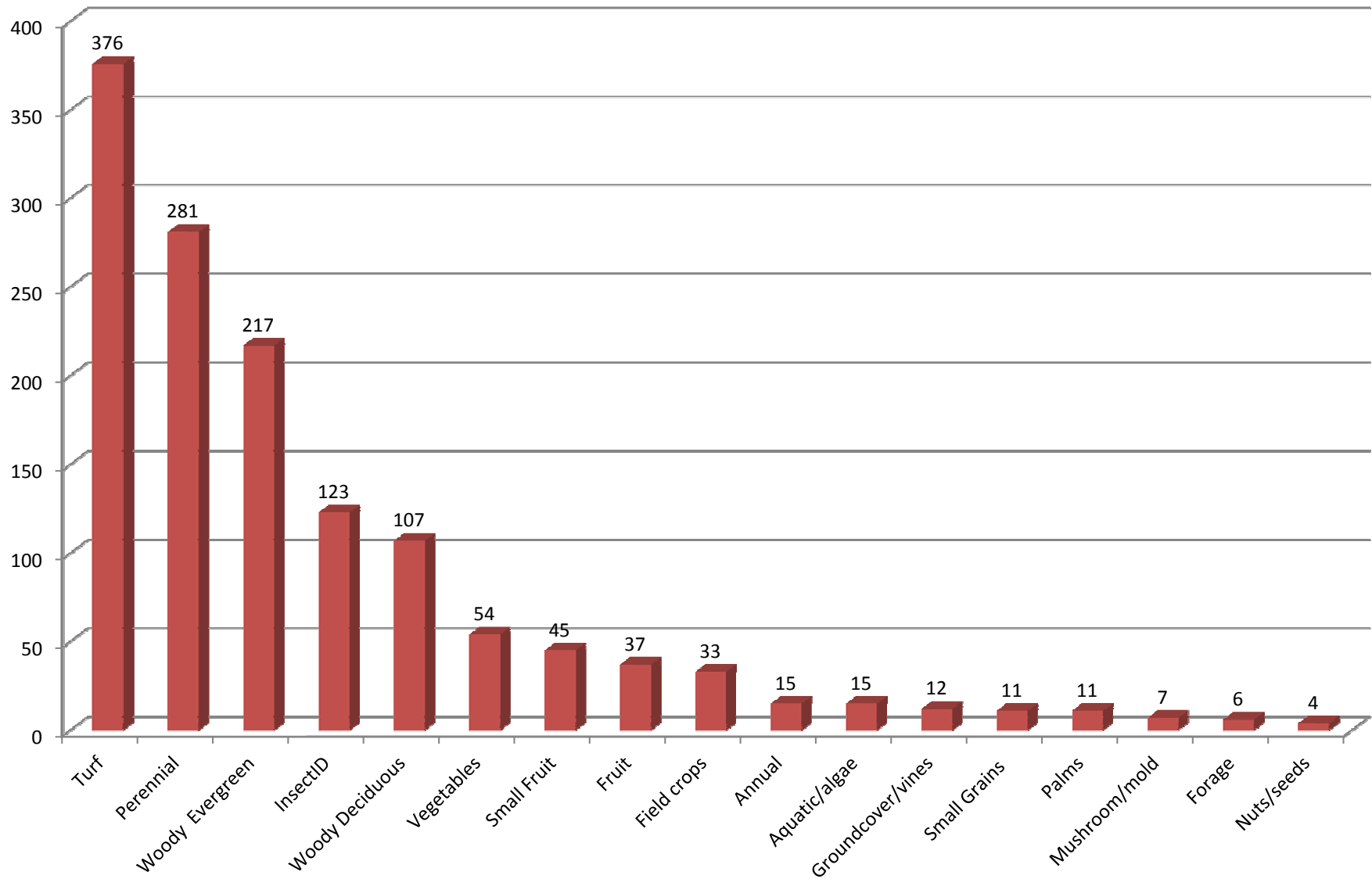
## Plant Problem Clinic Samples by Submitter Type for 2012



**Diagnoses/Identifications Requested  
from the Plant Problem Clinic for 2012**



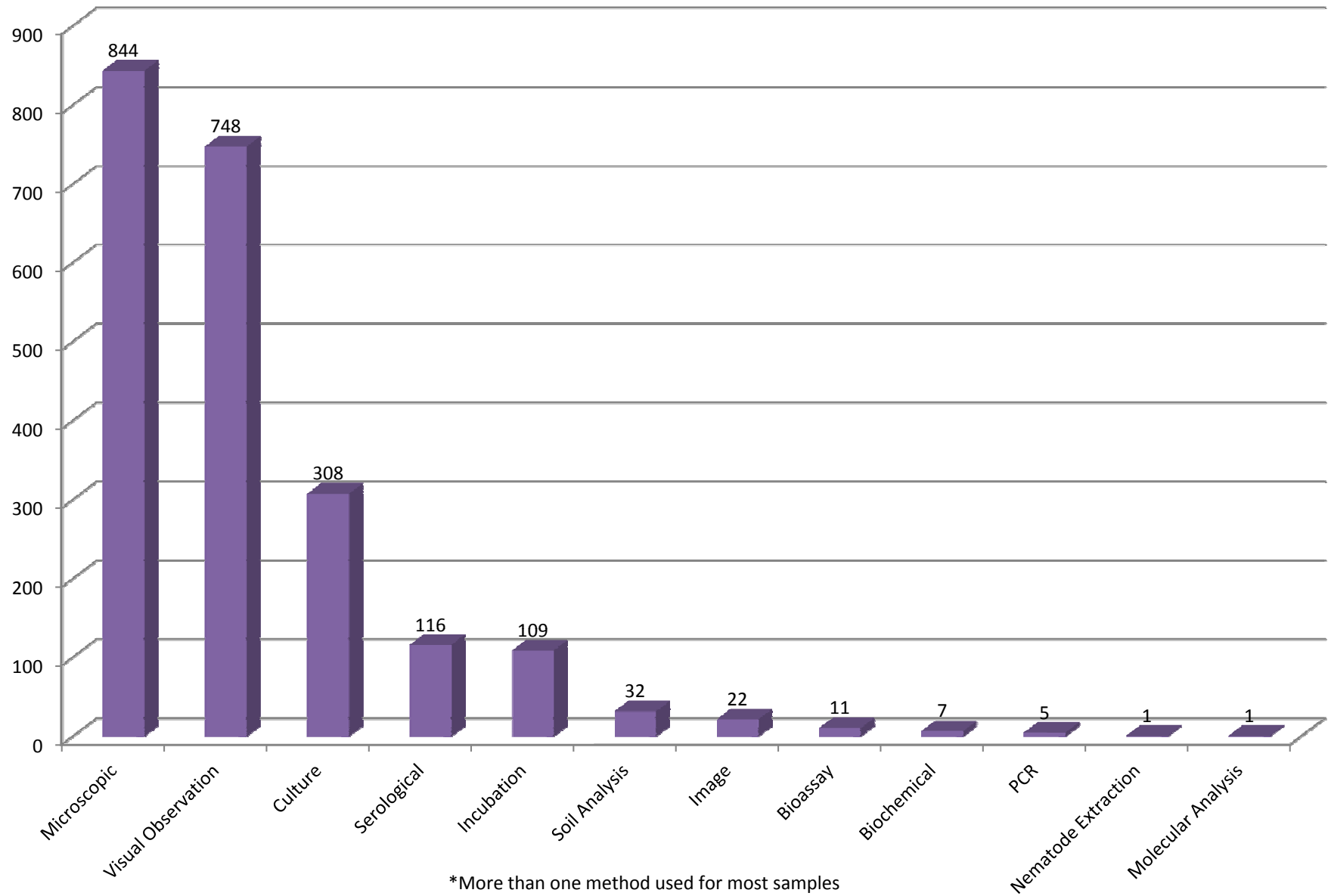
## Plant Problem Clinic Sample Categories for 2012 by Number of Samples



Number of Samples  
by State of Origin for 2012

South Carolina	1312
North Carolina	20
Virginia	9
Louisiana	5
Texas	5
Alabama	4
Georgia	3
Florida	2
Tennessee	1
West Virginia	1
Total	1366

## Types of Methods used in the Plant Problem by Count for 2012\*



\*More than one method used for most samples

## Diagnoses/Identifications on Ornamentals & Trees

	Confirmed	Not Detected	Suspected	Inconclusive
<b>Aloe (Aloe sp./spp.) 1*</b>				
Sour Skin (Burkholderia cepacia)	1	0	0	0
<b>Arborvitae (Thuja standishii x plicata) 1</b>				
Macrophoma Blight; Dieback (Macrophoma sp./spp.)	1	0	0	0
<b>Arborvitae (Thuja sp./spp.) 5</b>				
Dieback; Canker; Twig Blight (Botryosphaeria sp./spp.)	2	0	0	0
Diplodia Blight (Sphaeropsis sapinea)	1	0	0	0
Macrophoma Blight; Dieback (Macrophoma sp./spp.)	1	0	0	0
Spruce Spider Mite (Oligonychus ununguis)	1	0	0	0
Twig Blight (Fusicoccum sp./spp.)	1	0	0	0
<b>Ash, Green (Fraxinus pennsylvanica lanceolata) 1</b>				
Unidentified Virus (Unidentified Virus)	0	0	0	1
<b>Asiatic Jasmine (Trachelospermum asiaticum) 2</b>				
Basket-grass (Oplismenus hirtellus)	1	0	0	0
Poison Ivy (Toxicodendron (Rhus) radicans)	2	0	0	0
<b>Asters (Aster sp./spp. hybrids) 1</b>				
Aster Rust; Pine Needle Rust (Coleosporium asterum)	1	0	0	0
<b>Astilbe (Astilbe japonica) 1</b>				
Cultural/Environmental Problem (Abiotic disorder)	0	0	1	0
<b>Azalea, Formosa (Rhododendron simsii formosa) 4</b>				
Chemical; Environmental Injury (Abiotic disorder)	0	0	2	0
Herbicide Injury; Exposure (Abiotic disorder)	1	0	0	0
Phomopsis Dieback; Tip Blight; Canker (Phomopsis sp.)	1	0	0	0
<b>Azalea (Rhododendron sp./spp.) 17</b>				
Azalea Lace Bug (Stephanitis pyrioides)	3	0	0	0
Cultural/Environmental Problem (Abiotic disorder)	0	0	1	0
Dieback; Canker; Twig Blight (Botryosphaeria sp./spp.)	1	0	0	0
Freeze; Frost; Cold Damage (Abiotic disorder)	2	0	0	0
Herbicide Injury; Exposure (Abiotic disorder)	0	0	1	0
High pH Damage (Abiotic disorder)	1	0	0	0
Manganese Deficiency (Abiotic disorder)	1	0	0	0
Phomopsis Dieback; Tip Blight; Canker (Phomopsis sp.)	1	0	0	0
Seasonal Leaf Drop (Abiotic disorder)	0	0	1	0
Southern Red Mite (Oligonychus ilicis)	1	0	0	0
Spider Mites (Family Tetranychidae)	0	0	0	1
Twospotted Spider Mite (Tetranychus urticae)	1	0	0	0
Unidentified Virus (Unidentified Virus)	0	0	0	1
<b>Baldcypress (Taxodium distichum) 2</b>				
Baldcypress Rust Mite (Epitrimerus taxodii)	0	0	1	0
Natural Senescence (Abiotic disorder)	1	0	0	0

\* Number after name = Number of diagnostic entries

	Confirmed	Not Detected	Suspected	Inconclusive
<b>Balloon Flower (Platycodon grandiflorus) 1</b>				
Phoma Blight; Dieback; Rot (Phoma sp./spp.)	0	0	1	0
<b>Bamboo (true) (Bambusa sp./spp.) 1</b>				
Bamboo Mealybug (Antonina pretiosa)	0	0	1	0
<b>Banana Shrub (Michelia figo) 1</b>				
Oedema; Edema (Abiotic disorder)	1	0	0	0
<b>Beebalm; Horsemint (Monarda sp./spp.) 3</b>				
Bacterial Blight (Unidentified Bacteria)	0	0	0	1
Bacterial Leaf Blight (Pseudomonas syringae)	2	0	0	0
<b>Blue Atlas cedar (Cedrus atlantica glauca) 1</b>				
Cultural/Environmental Problem (Abiotic disorder)	0	0	1	0
<b>Bluebeard (Caryopteris sp./spp.) 1</b>				
Moisture Stress (Abiotic disorder)	0	0	1	0
<b>Boxwood, Common (Buxus sempervirens) 8</b>				
Boxwood Mite (Eurytetranychus buxi)	1	0	2	0
Boxwood Volutella Blight; Canker (Volutella buxi)	1	0	0	0
Cultural/Environmental Problem (Abiotic disorder)	0	0	1	0
Greedy Scale (Hemiberlesia rapax)	1	0	0	0
Macrophoma Blight; Dieback (Macrophoma sp./spp.)	1	0	0	0
Nutritional Deficiency (Abiotic disorder)	0	0	1	0
<b>Boxwood, English (Buxus sempervirens 'suffruticosa') 2</b>				
Phytophthora Root Rot (Phytophthora nicotianae)	1	0	0	0
Unidentified Virus (Unidentified Virus)	0	0	1	0
<b>Boxwood, Japanese (Buxus microphylla var. japonica) 2</b>				
Cultural/Environmental Problem (Abiotic disorder)	0	0	1	0
Root Knot Nematodes (Meloidogyne sp./spp.)	1	0	0	0
<b>Boxwood, Littleleaf (Buxus microphylla) 2</b>				
Boxwood Mite (Eurytetranychus buxi)	0	0	1	0
Planting Too Deep (Abiotic disorder)	1	0	0	0
<b>Boxwood (Buxus sp./spp.) 8</b>				
Boxwood Leafminer (Monarthropalpus flavus (buxi))	2	0	0	0
Boxwood Mite (Eurytetranychus buxi)	0	0	2	0
Cottony Cushion Scale (Icerya purchasi)	1	0	0	0
Cultural/Environmental Problem (Abiotic disorder)	0	0	1	0
Phytophthora Root Rot (Phytophthora sp./spp.)	1	0	0	0
Root Problems (Abiotic disorder)	0	0	1	0
<b>Boxwood Hybrids (Buxus sp./spp. hybrids) 4</b>				
Boxwood Volutella Blight; Canker (Volutella buxi)	1	0	0	0
Cultural/Environmental Problem (Abiotic disorder)	0	0	1	0
Pythium Root and/or Crown Rot (Pythium sp./spp.)	1	0	0	0
Stem Canker (Colletotrichum sp./spp.)	1	0	0	0
<b>Bugleweed (ground cover) (Ajuga reptans) 1</b>				
Southern Stem Rot (Sclerotium rolfsii)	1	0	0	0

	Confirmed	Not Detected	Suspected	Inconclusive
<b>Butterfly-bush (<i>Buddleia</i> sp./spp.) 1</b>				
Cultural/Environmental Problem (Abiotic disorder)	0	0	1	0
<b>Callery Pear (<i>Pyrus calleryana</i>) 2</b>				
Fire Blight ( <i>Erwinia amylovora</i> )	0	0	2	0
<b>Camellia, Common (<i>Camellia japonica</i>) 19</b>				
Algal Leaf Spot ( <i>Cephaleuros virescens</i> )	3	0	0	0
Anthracnose, <i>Colletotrichum</i> Leaf Spot ( <i>Colletotrichum</i> sp.)	2	0	0	0
Cladosporium Bud Blight ( <i>Cladosporium</i> sp./spp.)	1	0	0	0
Cultural/Environmental Problem (Abiotic disorder)	1	0	2	0
Eriophyid Mites (Family Eriophyidae)	0	0	0	1
Fusarium Root Rot ( <i>Fusarium</i> sp./spp.)	1	0	0	0
Gray Leaf Blight ( <i>Pestalotiopsis</i> sp./spp.)	1	0	0	0
Indian Wax Scale ( <i>Ceroplastes ceriferus</i> )	1	0	0	0
Mite Damage (Unidentified Mite)	0	0	0	1
Phytophthora Root Rot ( <i>Phytophthora cinnamomi</i> )	1	0	0	0
Tea Scale ( <i>Fiorinia theae</i> )	1	0	0	0
Unidentified Virus (Unidentified Virus)	0	0	1	2
<b>Camellia, Sasanqua (<i>Camellia sasanqua</i>) 13</b>				
Anthracnose Leaf Blight ( <i>Glomerella</i> ( <i>Colletotrichum</i> graminicola))	1	0	0	0
Camellia Leaf Gall ( <i>Exobasidium camelliae</i> )	1	0	0	0
Camellia Yellow Mottle ( <i>Camellia</i> Yellow Mottle Virus)	0	0	1	0
Cultural/Environmental Problem (Abiotic disorder)	0	0	2	0
Dieback; Canker; Twig Blight ( <i>Botryosphaeria</i> sp./spp.)	1	0	0	0
Fusarium Root Rot ( <i>Fusarium</i> sp./spp.)	1	0	0	0
Leaf Spot ( <i>Pestalotiopsis</i> ( <i>Pestalotia</i> ) sp./spp.)	1	0	0	0
Nutrient Imbalance (Abiotic disorder)	1	0	0	0
Oedema; Edema (Abiotic disorder)	1	0	0	0
Phomopsis Dieback; Tip Blight; Canker ( <i>Phomopsis</i> sp.)	2	0	0	0
Unidentified Virus (Unidentified Virus)	0	0	0	1
<b>Camellia (<i>Camellia</i> sp./spp.) 11</b>				
Algal Leaf Spot ( <i>Cephaleuros virescens</i> )	2	0	0	0
Camellia Yellow Mottle ( <i>Camellia</i> Yellow Mottle Virus)	0	0	2	0
Decline; Dieback (Abiotic disorder)	1	0	0	0
Insect Damage (Unidentified Insect)	0	0	1	0
Sun Scorch (Abiotic Disorder)	1	0	0	0
Tea Scale ( <i>Fiorinia theae</i> )	4	0	0	0
<b>Candytuft (<i>Iberis sempervirens</i>) 1</b>				
Cultural/Environmental Problem (Abiotic disorder)	0	0	1	0
<b>Canna Lily (<i>Canna x generalis</i>) 4</b>				
Alternaria Runner Rot ( <i>Alternaria</i> sp./spp.)	2	0	0	0
Cultural/Environmental Problem (Abiotic disorder)	0	0	2	0



	Confirmed	Not Detected	Suspected	Inconclusive
<b>Cast Iron plant (<i>Aspidistra elatior</i>) 1</b>				
Florida Red Scale ( <i>Chrysomphalus aonidum</i> )	1	0	0	0
<b>Cedar, Eastern Red (<i>Juniperus virginiana</i>) 2</b>				
Anthracnose; Colletotrichum Needle Spot ( <i>Colletotrichum</i> sp.)	1	0	0	0
Cedar-Quince Rust ( <i>Gymnosporangium clavipes</i> )	1	0	0	0
<b>Centaurea, Mountain Bluet (<i>Centaurea montana</i>) 1</b>				
Tomato Spotted Wilt (Tomato Spotted Wilt Virus (TSWV))	1	0	0	0
<b>Cherry, Flowering (<i>Prunus</i> sp./spp.) 9</b>				
Bacterial Leaf Scorch (BLS) ( <i>Xylella fastidiosa</i> (BLS))	0	1	0	0
Cultural/Environmental Problem (Abiotic disorder)	0	0	3	0
Eastern Tent Caterpillar ( <i>Malacosoma americanum</i> )	1	0	0	0
Leaf Spot ( <i>Pseudocercospora</i> sp./spp.)	3	0	0	0
White Peach Scale ( <i>Pseudaulacaspis pentagona</i> )	1	0	0	0
<b>Cherry, Japanese Flowering (<i>Prunus serrulata</i>) 1</b>				
Decline; Dieback (Abiotic disorder)	1	0	0	0
<b>Cherry, Weeping (<i>Prunus x snofozam</i>) 1</b>				
Leaf Spot ( <i>Pseudocercospora</i> sp./spp.)	1	0	0	0
<b>Cherry, Yoshino (<i>Prunus yedoensis</i>) 1</b>				
Cultural/Environmental Problem (Abiotic disorder)	0	0	1	0
<b>Cherry-laurel (<i>Prunus laurocerasus</i>) 3</b>				
Dieback; Canker; Twig Blight ( <i>Botryosphaeria</i> sp./spp.)	1	0	0	0
Lesser Snow Scale ( <i>Pinnaspis strachani</i> )	1	0	0	0
Root Rot ( <i>Thielaviopsis</i> sp./spp.)	1	0	0	0
<b>Chinese Fringe flower (<i>Loropetalum chinense</i>) 8</b>				
Cultural/Environmental Problem (Abiotic disorder)	0	0	3	0
Dieback; Canker; Twig Blight ( <i>Botryosphaeria</i> sp./spp.)	1	0	0	0
High pH Damage (Abiotic disorder)	1	0	0	0
Manganese Deficiency (Abiotic disorder)	0	0	1	0
Phytophthora Root Rot ( <i>Phytophthora cinnamomi</i> )	1	0	0	0
Southern Red Mite ( <i>Oligonychus ilicis</i> )	1	0	0	0
<b>Chinese Fringetree (<i>Chionanthus retusus</i>) 2</b>				
Dieback; Canker; Twig Blight ( <i>Botryosphaeria</i> sp./spp.)	1	0	0	0
Passalora Leaf Spot ( <i>Passalora</i> sp./spp.)	1	0	0	0
<b>Chinese Ground orchid (<i>Bletilla striata</i>) 1</b>				
Anthracnose Colletotrichum Leaf Spot ( <i>Colletotrichum</i> sp.)	1	0	0	0
<b>Chrysanthemum, Nippon Daisy (<i>Chrysanthemum nipponicum</i>) 4</b>				
Tomato Spotted Wilt (Tomato Spotted Wilt Virus (TSWV))	2	2	0	0
<b>Chrysanthemum (<i>Chrysanthemum</i> sp./spp. hybrids) 16</b>				
American Serpentine Leafminer ( <i>Liriomyza trifolii</i> )	0	0	1	0
Anthracnose, Colletotrichum Leaf Spot ( <i>Colletotrichum</i> sp.)	1	0	0	0

	Confirmed	Not Detected	Suspected	Inconclusive
<b>Chrysanthemum (Chrysanthemum sp./spp. hybrids) 17</b>				
Fusarium Wilt (Fusarium oxysporum)	2	0	0	0
Poor Growing Conditions (Abiotic disorder)	0	0	1	0
Slime Mold (Class Myxomycetes; Myxomycota)	1	0	0	0
Stemphylium Leaf Spot (Stemphylium sp./spp.)	4	0	0	0
Tomato Spotted Wilt (Tomato Spotted Wilt Virus (TSWV))	1	0	0	0
Unknown Abiotic Disorder (Abiotic disorder)	0	0	0	3
<b>Clematis (Clematis sp./spp.) 9</b>				
Botrytis Blight (Botrytis sp./spp.)	2	0	0	0
Cercospora Leaf Spot (Cercospora sp./spp.)	1	0	0	0
Clematis Wilt; Leaf Spot (Phoma clematidina)	6	0	0	0
<b>Coleus, Flame Nettle (Coleus sp./spp.) 1</b>				
Henbit Downy Mildew (Peronospora lamii)	1	0	0	0
<b>Columbine (Aquilegia sp./spp.) 1</b>				
White Mold (Stem Rot) (Sclerotinia sclerotiorum)	1	0	0	0
<b>Coneflower (Echinacea sp./spp.) 4</b>				
Chemical; Environmental Injury (Abiotic disorder)	0	0	1	0
Common Thrips (Family Thripidae)	1	0	0	0
Fusarium Root Rot (Fusarium sp./spp.)	2	0	0	0
<b>Coreopsis, Thread-leaf (Coreopsis verticillata) 2</b>				
Botrytis Blight (Botrytis sp./spp.)	1	0	0	0
Poor Growing Conditions (Abiotic disorder)	0	0	1	0
<b>Coreopsis, Tickseed (Coreopsis sp./spp.) 4</b>				
Crown Rot (Rhizoctonia sp./spp.)	1	0	0	0
Moisture Stress (Abiotic disorder)	0	0	1	0
Stemphylium Leaf Spot (Stemphylium sp./spp.)	1	0	0	0
Tomato Spotted Wilt (Tomato Spotted Wilt Virus (TSWV))	0	1	0	0
<b>Crape Myrtle (Lagerstroemia indica) 1</b>				
Psocid Barklice (Cerastipsocus sp.) ( )	1	0	0	0
<b>Creeping Jenny (Lysimachia nummularia) 1</b>				
Southern Stem Blight (Sclerotium rolfsii)	1	0	0	0
<b>Daylily (Hemerocallis sp./spp. hybrids) 42</b>				
Anthracnose; Colletotrichum Leaf Spot (Colletotrichum sp.)	1	0	0	0
Aphids (Plant Lice) (Family Aphididae)	1	0	0	0
Daylily Leaf Streak (Collecephalus hemerocallidis)	0	0	1	0
No Pathogen Found (No Pathogen Found)	0	30	0	0
Phytophthora Crown and/or Root Rot (Phytophthora nicotianae)	1	0	0	0
Poor Root Development (Abiotic disorder)	2	0	0	0
Pythium Root and/or Crown Rot (Pythium sp./spp.)	1	0	0	0
Rhizoctonia Crown and Root Rot (Thanatephorus (Rhizoctonia) cucumeris (solani))	1	0	0	0

	Confirmed	Not Detected	Suspected	Inconclusive
<b>Daylily (Hemerocallis sp./spp. hybrids) 42</b>				
Rhizoctonia Crown and Stem Rot (Rhizoctonia sp./spp.)	1	0	0	0
Rhizoctonia Root Rot (Rhizoctonia sp./spp.)	2	0	0	0
<b>Daylily (Hemerocallis sp./spp. hybrids) 42</b>				
Spider Mites (Family Tetranychidae)	1	0	0	0
<b>Dicentra (Dicentra sp./spp.) 1</b>				
Tobacco Rattle (Tobacco Rattle Virus (TRV))	1	0	0	0
<b>Dogwood, Flowering (Cornus florida) 6</b>				
Chemical Injury (Abiotic disorder)	1	0	0	0
Dieback; Canker; Twig Blight (Botryosphaeria sp./spp.)	1	0	0	0
Mechanical Damage (Abiotic disorder)	0	0	1	0
Powdery Mildew (Oidium sp./spp.)	1	0	0	0
Undetermined Injury or Pest (Identification Analysis)	0	0	0	1
Wood Boring Insect Damage (Unidentified Wood Boring Insect)	0	0	0	1
<b>Dogwood, Flowering, pink (Cornus florida rubra) 2</b>				
Anthracnose; Colletotrichum Leaf Spot (Colletotrichum sp./spp.)	1	0	0	0
Mechanical Damage (Abiotic disorder)	1	0	0	0
<b>Dogwood, Japanese (kousa) (Cornus kousa) 5</b>				
Anthracnose; Colletotrichum Leaf Spot (Colletotrichum sp.)	1	0	0	0
Bacterial Wetwood; Slime Flux (Enterobacter (Erwinia nimipressuralis))	1	0	0	0
Environmental Stress; Problem (Abiotic disorder)	0	0	1	0
Phoma Blight; Dieback; Rot (Phoma sp./spp.)	1	0	0	0
Phomopsis Dieback; Tip Blight; Canker (Phomopsis sp./spp.)	1	0	0	0
<b>Echinacea Coneflower (Echinacea purpurea) 4</b>				
Anthracnose; Colletotrichum Leaf Spot (Colletotrichum sp.)	3	0	0	0
Bacterial Soft Rot [Dickeya (Erwinia )(Pectobacterium chrysanthemi)]	1	0	0	0
<b>Elm, Chinese Lacebark (Ulmus parvifolia) 2</b>				
Cultivar Susceptability (Abiotic disorder)	0	0	1	0
Freeze; Frost; Cold Damage (Abiotic disorder)	0	0	1	0
<b>Elephant's Ear (Colocasia sp./spp.) 1</b>				
Pythium Root and/or Crown Rot (Pythium sp./spp.)	1	0	0	0
<b>English Ivy (Hedera helix) 5</b>				
Colletotrichum Stem Decay (Colletotrichum sp./spp.)	2	0	0	0
Poor Root Development (Abiotic disorder)	3	0	0	0
<b>Eucalyptus, Silver-dollar Tree (Eucalyptus cinerea) 1</b>				
Root Problems (Abiotic disorder)	0	0	1	0
<b>Eucalyptus (Eucalyptus sp./spp.) 3</b>				
Paropsine Leaf Beetle (Chrysophtharta m-fuscum)	1	0	0	0

	Confirmed	Not Detected	Suspected	Inconclusive
<b>Eucalyptus (Eucalyptus sp./spp.) 3</b>				
Paropsine Leaf Beetle (Paropsisterna m-fuscum)	2	0	0	0
<b>Evening Primrose (Oenothera sp./spp.) 3</b>				
Phytophthora Crown and/or Root Rot (Phytophthora nicotianae)	1	0	0	0
Phytophthora Crown, Root and/or Stem Rot (Phytophthora sp.)	1	0	0	0
Rhizoctonia Crown and Stem Rot (Rhizoctonia sp./spp.)	1	0	0	0
<b>Evolvulus (Evolvulus nuttalianus) 1</b>				
Cultural/Environmental Problem (Abiotic disorder)	0	0	1	0
<b>Fern, Autumn (Dryopteris erythrosora) 3</b>				
Anthraco-nose Basal Rot; Crown Rot (Colletotrichum sp.)	1	0	0	0
Cultural/Environmental Problem (Abiotic disorder)	0	0	1	0
Phoma Blight; Dieback; Rot (Phoma sp./spp.)	1	0	0	0
<b>Fern, Rock (Woodsia obtusa) 1</b>				
Leafhoppers (Family Cicadellidae)	0	0	1	0
<b>Ferns (Ferns; various genera sp./spp.) 2</b>				
Anthraco-nose; Colletotrichum Leaf Spot (Colletotrichum sp.)	1	0	0	0
Phytophthora Crown: Root and/or Stem Rot (Phytophthora sp./spp.)	1	0	0	0
<b>Fig (ornamental) (Ficus sp./spp.) 1</b>				
Peppervine (Ampelopsis arborea)	1	0	0	0
<b>Firethorn (Pyracantha sp./spp.) 2</b>				
Spider Mites (Family Tetranychidae)	1	0	0	0
Woolly Apple Aphid (Eriosoma lanigerum)	1	0	0	0
<b>Forget-me-not (Myosotis sp./spp.) 1</b>				
Nutrient Imbalance (Abiotic disorder)	0	0	1	0
<b>Fothergilla (Fothergilla sp./spp.) 1</b>				
Herbicide Injury; Exposure (Abiotic disorder)	0	0	1	0
<b>Fountain Grass (Pennisetum sp./spp.) 1</b>				
Anthraco-nose; Colletotrichum Leaf Spot (Colletotrichum sp.)	0	0	1	0
<b>Foxglove (Digitalis purpurea) 1</b>				
Cultural/Environmental Problem (Abiotic disorder)	1	0	0	0
<b>Gardenia (Gardenia sp./spp. hybrids) 9</b>				
Cultural/Environmental Problem (Abiotic disorder)	1	0	1	0
Normal Plant Growth (Identification Analysis)	1	0	0	0
Nutritional Deficiency (Abiotic disorder)	0	0	1	0
Poor Root Development (Abiotic disorder)	1	0	0	0
Root and or Pot Bound (Abiotic disorder)	1	0	0	0
Scorch (Abiotic disorder)	0	0	1	0
Sooty Mold (Unidentified Fungus)	1	0	0	0
Whiteflies (Family Aleyrodidae)	0	0	0	1

	Confirmed	Not Detected	Suspected	Inconclusive
<b>Gaura (Gaura sp./spp.) 1</b>				
Normal Plant Growth (Identification Analysis)	1	0	0	0
<b>Geranium ('cultivated') (Pelargonium sp./spp.) 4</b>				
Bacterial Wilt ( <i>Ralstonia solanacearum</i> )	0	1	0	0
Chemical; Environmental Injury (Abiotic disorder)	0	0	1	0
Pythium Root and/or Crown Rot ( <i>Pythium</i> sp./spp.)	1	0	0	0
<b>Hemlock, Eastern (Tsuga canadensis) 1</b>				
Elongate Hemlock Scale ( <i>Fiorinia externa</i> )	1	0	0	0
<b>Hibiscus (Hibiscus sp./spp.) 2</b>				
Alternaria Leaf Spot ( <i>Alternaria</i> sp./spp.)	1	0	0	0
Anthracnose Basal Rot; Crown Rot ( <i>Colletotrichum</i> sp.)	1	0	0	0
<b>Holly, American (Ilex opaca) 4</b>				
Holly Pit Scale ( <i>Asterolecanium puteanum</i> )	1	0	0	0
Native Holly Leafminer ( <i>Phytomyza ilicicola</i> )	1	0	0	0
Root Problems (Abiotic disorder)	0	0	1	0
Scale Insects (Order homoptera)	1	0	0	0
<b>Holly, Burford (Ilex cornuta burfordii) 1</b>				
Glyphosate Injury (Abiotic disorder)	0	0	1	0
<b>Holly, Chinese (Ilex cornuta) 9</b>				
Cultural/Environmental Problem (Abiotic disorder)	0	0	1	0
Dieback; Canker; Twig Blight ( <i>Botryosphaeria</i> sp./spp.)	1	0	0	0
<i>Fiorinia</i> sp. (Scale insect)	2	0	0	0
Genetic Disorders (Abiotic disorder)	0	0	1	0
Herbicide Injury; Exposure (Abiotic disorder)	0	0	1	0
Phytophthora Root Rot ( <i>Phytophthora cinnamomi</i> )	1	0	0	0
Scale Insects (Order homoptera)	0	0	0	1
Tea Scale ( <i>Fiorinia theae</i> )	1	0	0	0
<b>Holly, East Palatka (Ilex x attenuata) 4</b>				
Cultural/Environmental Problem (Abiotic disorder)	0	0	1	0
Dieback; Canker; Twig Blight ( <i>Botryosphaeria</i> sp./spp.)	1	0	0	0
Holly Pit Scale ( <i>Asterolecanium puteanum</i> )	1	0	0	0
Mechanical Damage (Abiotic disorder)	1	0	0	0
<b>Holly, Heller (mushroom) (Ilex crenata helleri) 2</b>				
Black Root Rot ( <i>Thielaviopsis basicola</i> / <i>Chalara elegans</i> )	1	0	0	0
Dieback; Canker; Twig Blight ( <i>Botryosphaeria</i> sp./spp.)	1	0	0	0
<b>Holly, Inkberry (Ilex glabra) 3</b>				
Black Root Rot ( <i>Thielaviopsis basicola</i> / <i>Chalara elegans</i> )	1	0	0	0
Cultural/Environmental Problem (Abiotic disorder)	0	0	1	0
Dieback; Canker; Twig Blight ( <i>Botryosphaeria</i> sp./spp.)	1	0	0	0
<b>Holly, Japanese (Ilex crenata) 8</b>				
Black Root Rot ( <i>Thielaviopsis basicola</i> / <i>Chalara elegans</i> )	3	0	0	0
Dieback; Canker; Twig Blight ( <i>Botryosphaeria</i> sp./spp.)	2	0	0	0
Euonymus Scale ( <i>Unaspis euonymi</i> )	1	0	0	0
Mite Damage (Unidentified Mite)	0	0	0	1
Oystershell Scale ( <i>Lepidosaphes ulmi</i> )	1	0	0	0

	Confirmed	Not Detected	Suspected	Inconclusive
<b>Holly, Lusterleaf (<i>Ilex latifolia</i>) 1</b>				
Scorch (Abiotic disorder)	1	0	0	0
<b>Holly, Oakleaf (<i>Ilex x conaf</i>) 1</b>				
Cultural/Environmental Problem (Abiotic disorder)	0	0	1	0
<b>Holly, Savannah (<i>Ilex attenuata</i>) 1</b>				
Seasonal Leaf Drop (Abiotic disorder)	0	0	1	0
<b>Holly, Yaupon (<i>Ilex vomitoria</i>) 1</b>				
Dieback; Canker; Twig Blight ( <i>Botryosphaeria</i> sp./spp.)	1	0	0	0
<b>Holly (<i>Ilex</i> sp./spp.) 2</b>				
Cultural/Environmental Problem (Abiotic disorder)	0	0	1	0
Dieback; Canker; Twig Blight ( <i>Botryosphaeria</i> sp./spp.)	1	0	0	0
<b>Holly Fern (<i>Cyrtomium falcatum</i>) 2</b>				
Fusarium Root; Stem Rot ( <i>Fusarium solani</i> )	1	0	0	0
Unidentified Virus (Unidentified Virus)	0	0	1	0
<b>Hosta (<i>Hosta</i> sp./spp.) 67</b>				
Bacterial Blight (Unidentified Bacteria)	0	0	0	1
Chemical; Environmental Injury (Abiotic disorder)	0	0	1	0
Hosta Virus X ( <i>Hosta Virus X</i> (HVX))	8	57	0	0
<b>Hydrangea (<i>Hydrangea arborescens</i>) 1</b>				
Fusarium Stem Rot ( <i>Fusarium</i> sp./spp.)	1	0	0	0
<b>Hydrangea, Bigleaf (<i>Hydrangea macrophylla</i>) 1</b>				
Phyllosticta Leaf Spot ( <i>Phyllosticta</i> sp./spp.)	1	0	0	0
<b>Hydrangea, Oakleaf (<i>Hydrangea quercifolia</i>) 1</b>				
Bacterial Leaf Spot ( <i>Xanthomonas</i> sp./spp.)	1	0	0	0
<b>Hydrangea (<i>Hydrangea</i> sp./spp.) 4</b>				
Cultural/Environmental Problem (Abiotic disorder)	0	0	1	0
Undetermined Injury or Pest (Identification Analysis)	0	0	0	1
<i>Xanthomonas</i> Bacterial Leaf Spot ( <i>Xanthomonas campestris</i> )	0	0	0	1
<b>Impatiens (<i>Impatiens walleriana</i>) 4</b>				
Downy Mildew ( <i>Plasmopara obducens</i> )	2	0	1	0
Pythium Root and/or Crown Rot ( <i>Pythium</i> sp./spp.)	1	0	0	0
<b>Indian Hawthorn (<i>Raphiolepis indica</i>) 3</b>				
Decline; Dieback (Abiotic disorder)	1	0	0	0
Entomosporium Leaf Spot ( <i>Entomosporium</i> sp./spp.)	1	0	0	0
Leaf Spot ( <i>Diplocarpon</i> ( <i>Entomosporium</i> ) <i>mespili</i> ( <i>maculata</i> ))	1	0	0	0
<b>Irish Moss (<i>Sagina subulata</i>) 1</b>				
Thrips Damage (Unidentified Thrips)	0	0	0	1
<b>Italian Cypress (<i>Cupressus sempervirens</i>) 7</b>				
Mite Damage (Unidentified Mite)	0	0	0	3
Needle Cast; Blight ( <i>Passalora</i> ( <i>Cercospora</i> ) <i>sequoiae</i> )	2	0	0	0
Seiridium Canker ( <i>Seiridium unicorne</i> / <i>Lepteutypa cupressi</i> )	2	0	0	0

	Confirmed	Not Detected	Suspected	Inconclusive
<b>Japanese Ardisia (<i>Ardisia japonica</i>) 2</b>				
Chlorine Toxicity (Abiotic disorder)	0	0	1	0
Fusarium Root Rot ( <i>Fusarium</i> sp./spp.)	1	0	0	0
<b>Japanese Cedar (<i>Cryptomeria japonica</i>) 3</b>				
Cultural/Environmental Problem (Abiotic disorder)	0	0	1	0
Dieback; Canker; Twig Blight ( <i>Botryosphaeria</i> sp./spp.)	1	0	0	0
Pine Needle Scale ( <i>Chionaspis pinifoliae</i> )	1	0	0	0
<b>Japanese Cleystera (<i>Ternstroemia gymnanthera</i>) 2</b>				
Cultural/Environmental Problem (Abiotic disorder)	0	0	2	0
<b>Japanese Spurge (<i>Pachysandra terminalis</i>) 5</b>				
Cultural/Environmental Problem (Abiotic disorder)	0	0	2	0
Mechanical Damage (Abiotic disorder)	0	0	1	0
Unknown Bacterial Disease (Unknown Bacterial Disease)	0	0	0	1
Volutella Canker; Leaf Blight ( <i>Pseudonectria</i> (ana. <i>Volutella</i> ) <i>pachysandricola</i> ( <i>pachysandrae</i> ))	1	0	0	0
<b>Juniper, Himalayan (<i>Juniperus squamata</i>) 2</b>				
Dieback; Canker; Twig Blight ( <i>Botryosphaeria</i> sp./spp.)	2	0	0	0
<b>Juniper, Rocky Mountain (<i>Juniperus scopulorum</i>) 3</b>				
Cedar-Quince Rust ( <i>Gymnosporangium clavipes</i> )	1	0	0	0
Juniper Scale ( <i>Carulaspis juniperi</i> )	1	0	0	0
Transplant Shock; Stress (Abiotic disorder)	0	0	1	0
<b>Juniper, Shore (<i>Juniperus conferta</i>) 2</b>				
Cultural/Environmental Problem (Abiotic disorder)	0	0	2	0
<b>Juniper (<i>Juniperus</i> sp./spp.) 6</b>				
Cultural/Environmental Problem (Abiotic disorder)	0	0	1	0
Kabatina Tip Blight; Needle Blight ( <i>Kabatina juniperi</i> )	1	0	0	0
Macrophoma Blight; Dieback ( <i>Macrophoma</i> sp./spp.)	1	0	0	0
Sphaeropsis Dieback ( <i>Sphaeropsis</i> sp./spp.)	3	0	0	0
<b>Lantana (<i>Lantana camara</i>) 2</b>				
Black Root Rot ( <i>Thielaviopsis basicola</i> / <i>Chalara elegans</i> )	1	0	0	0
Stem Canker ( <i>Colletotrichum</i> (teleo. <i>Glomerella</i> ) sp./spp.)	1	0	0	0
<b>Lantana (<i>Lantana</i> sp./spp.) 2</b>				
Corynespora Leaf Spot ( <i>Corynespora cassiicola</i> )	1	0	0	0
Low pH; Nutrient Imbalance (Abiotic disorder)	1	0	0	0
<b>Larkspur (<i>Delphinium</i> spp) 3</b>				
Bacterial Blight (Unidentified Bacteria)	0	0	1	2
<b>Lenten Rose (<i>Helleborus orientalis</i>) 2</b>				
Crown Rot (Unidentified Fungus)	0	0	0	1
Cultural/Environmental Problem (Abiotic disorder)	0	0	1	0
<b>Leyland Cypress (<i>X cupressocyparis leylandii</i>) 12</b>				
Cultural/Environmental Problem (Abiotic disorder)	0	0	4	0
Dieback; Canker; Twig Blight ( <i>Botryosphaeria</i> sp./spp.)	1	0	0	0

	Confirmed	Not Detected	Suspected	Inconclusive
<b>Leyland Cypress (<i>X cupressocyparis leylandii</i>) 12</b>				
Juniper Scale ( <i>Carulaspis juniperi</i> )	1	0	0	0
Needle Cast; Blight ( <i>Passalora (Cercospora) sequoiae</i> )	1	0	0	0
Pestalotiopsis Needle Blight; Tip Blight ( <i>Pestalotiopsis sp./spp.</i> )	1	0	0	0
Seiridium Canker ( <i>Seiridium unicorne/Lepteutypa cupressi</i> )	3	0	0	0
Sooty Mold (Unidentified Fungus)	1	0	0	0
<b>Licorice Plant (<i>Helichrysum sp./spp.</i>) 1</b>				
Poor Root Development (Abiotic disorder)	0	0	1	0
<b>Ligustrum; Japanese Privet (<i>Ligustrum japonicum</i>) 3</b>				
Leaf Spot ( <i>Pseudocercospora sp./spp.</i> )	2	0	0	0
Nutritional Deficiency (Abiotic disorder)	1	0	0	0
<b>Ligustrum; Privet (<i>Ligustrum sp./spp.</i>) 3</b>				
Drainage Problem (Abiotic disorder)	0	0	1	0
Root Rot (Unidentified Agent)	0	0	0	1
Wax Scale ( <i>Ceroplastes sp./spp.</i> )	1	0	0	0
<b>Lily (<i>Lilium sp./spp.</i>) 2</b>				
Potyvirus Group (Potyvirus Group)	0	0	0	2
<b>Lilyturf (bordergrass) (<i>Liriope sp./spp.</i>) 3</b>				
Fusarium Root Rot ( <i>Fusarium sp./spp.</i> )	1	0	0	0
Large Milkweed Bug ( <i>Oncopeltus fasciatus</i> )	1	0	0	0
Not Pathogen; Saprophyte (Secondary Agents; Saprophytes; Unspecif.)	0	0	0	1
<b>Lithodora, Grace Ward (<i>Lithodora diffusa</i>) 1</b>				
Botrytis Blight ( <i>Botrytis sp./spp.</i> )	1	0	0	0
<b>Loquat (<i>Eriobotrya japonica</i>) 3</b>				
Armillaria Root Rot/ Mushroom Rot ( <i>Armillaria (Clitocybe) tabescens</i> )	1	0	0	0
Bean Plataspid ( <i>Megacopta cribraria</i> )	1	0	0	0
Cultural/Environmental Problem (Abiotic disorder)	0	0	1	0
<b>Lovegrass (<i>Eragrostis sp./spp.</i>) 1</b>				
Cereal Rye ( <i>Secale cereale</i> ) ( )	1	0	0	0
<b>Madagascar periwinkle; vinca (<i>Catharanthus roseus</i>) 3</b>				
Colletotrichum Stem Decay ( <i>Colletotrichum sp./spp.</i> )	1	0	0	0
Phytophthora Crown, Root and/or Stem Rot ( <i>Phytophthora sp.</i> )	1	0	0	0
Pythium Root and/or Crown Rot ( <i>Pythium sp./spp.</i> )	1	0	0	0
<b>Magnolia, Southern (<i>Magnolia grandiflora</i>) 10</b>				
Armored Scales (Family Diaspididae)	0	0	0	2
Boron Toxicity (Abiotic disorder)	1	0	0	0
Cultural/Environmental Problem (Abiotic disorder)	0	0	2	0
Greedy Scale ( <i>Hemiberlesia rapax</i> )	2	0	0	0
Magnolia White Scale ( <i>Pseudaulacaspis cockerelli</i> )	1	0	0	0
Nutrient Imbalance (Abiotic disorder)	0	0	1	0



	Confirmed	Not Detected	Suspected	Inconclusive
<b>Magnolia, Southern (<i>Magnolia grandiflora</i>) 10</b>				
Tea Scale ( <i>Fiorinia theae</i> )	1	0	0	0
<b>Magnolia (<i>Magnolia</i> sp./spp.) 1</b>				
Magnolia White Scale ( <i>Pseudaulacaspis cockerelli</i> )	1	0	0	0
<b>Maple, Freeman's (<i>Acer freemanii</i>) 2</b>				
Cultural/Environmental Problem (Abiotic disorder)	0	0	1	0
Root Damage (Abiotic disorder)	0	0	1	0
<b>Maple, Japanese (<i>Acer palmatum</i>) 8</b>				
Anthracnose; Colletotrichum Leaf Spot ( <i>Colletotrichum</i> sp./spp.)	1	0	0	0
Colletotrichum Dieback ( <i>Glomerella</i> ( <i>Colletotrichum</i> ) <i>cingulata</i> ( <i>gloeosporioides</i> ))	1	0	0	0
Cultural/Environmental Problem (Abiotic disorder)	0	0	1	0
Dieback; Canker; Twig Blight ( <i>Botryosphaeria</i> sp./spp.)	0	0	1	0
Fertilizer Injury (Abiotic disorder)	0	0	1	0
Phomopsis Dieback; Tip Blight; Canker ( <i>Phomopsis</i> sp.)	1	0	0	0
Phyllosticta Leaf Spot ( <i>Phyllosticta</i> sp./spp.)	1	0	0	0
Root Problems (Abiotic disorder)	1	0	0	0
<b>Maple, Norway (<i>Acer platanoides</i>) 1</b>				
Chemical; Environmental Injury (Abiotic disorder)	0	0	1	0
<b>Maple, Red (<i>Acer rubrum</i>) 5</b>				
Cultural/Environmental Problem (Abiotic disorder)	0	0	1	0
Environmental Stress; Problem (Abiotic disorder)	0	0	1	0
Maple Tar Spot ( <i>Rhytisma acerinum</i> )	0	0	1	0
Phyllosticta Leaf Spot ( <i>Phyllosticta</i> sp./spp.)	1	0	0	0
Undetermined Injury or Pest (Identification Analysis)	0	0	0	1
<b>Maple, Sugar (<i>Acer saccharum</i>) 1</b>				
Tarsonemid Mites (Family Tarsonemidae)	0	0	0	1
<b>Mazus (<i>Mazus reptans</i>) 1</b>				
Pythium Root and/or Crown Rot ( <i>Pythium</i> sp./spp.)	1	0	0	0
<b>Mondgrass (dwarf lily turf) (<i>Ophiopogon japonicus</i>) 6</b>				
Anthracnose; Colletotrichum Leaf Spot ( <i>Colletotrichum</i> sp.)	2	0	0	0
Cultural/Environmental Problem (Abiotic disorder)	0	0	2	0
Fungal Pathogens (General)	0	0	0	1
Scale Insects (Order Homoptera)	1	0	0	0
<b>Norfolk Island pine (<i>Araucaria heterophylla</i>) 1</b>				
Cultural/Environmental Problem (Abiotic disorder)	0	0	1	0
<b>Oak, Laurel (<i>Quercus laurifolia</i>) 2</b>				
Actinopelte Leaf Spot ( <i>Actinopelte dryina</i> )	1	0	0	0
Wood Boring Insect Damage (Unidentified Wood Boring Insect)	0	0	0	1

	Confirmed	Not Detected	Suspected	Inconclusive
<b>Oak, Live (<i>Quercus virginiana</i>) 12</b>				
Botryosphaeria Canker; Dieback ( <i>Botryosphaeria stevensii</i> /Diplodia mutila)	1	0	0	0
Cultural/Environmental Problem (Abiotic disorder)	0	0	2	0
Cylindrosporium Leaf Spot ( <i>Cylindrosporium</i> sp./spp.)	1	0	0	0
Cynipid Gall Wasp ( <i>Andricus quercusfoliatus</i> )	1	0	0	0
Cynipid Gall Wasp ( <i>Disholcaspis</i> sp./spp.)	2	0	0	0
Oak Leaf Blister ( <i>Taphrina caerulescens</i> )	2	0	0	0
Oak Treehopper ( <i>Platycotis vittata</i> )	1	0	0	0
Twig Blight ( <i>Coryneum japonicum</i> )	1	0	0	0
Wood Boring Insect Damage (Unidentified Wood Boring Insect)	0	0	0	1
<b>Oak, Pin (<i>Quercus palustris</i>) 2</b>				
Insect Damage (Unidentified Insect)	0	1	0	0
Undetermined Injury or Pest (Identification Analysis)	0	0	0	1
<b>Oak, Red (<i>Quercus falcata</i>) 1</b>				
Actinopelte Leaf Spot ( <i>Actinopelte dryina</i> )	1	0	0	0
<b>Oaks, Red (<i>Quercus</i> sp./spp., red oak group) 2</b>				
Herbicide Injury; Exposure (Abiotic disorder)	0	0	1	0
Spider Mites (Family Tetranychidae)	0	0	0	1
<b>Oak, Sawtooth (<i>Quercus acutissima</i>) 2</b>				
Cultural/Environmental Problem (Abiotic disorder)	0	0	0	0
Lichens (Lichenes)	0	0	0	1
<b>Oak, Scarlet (<i>Quercus coccinea</i>) 2</b>				
Actinopelte Leaf Spot ( <i>Actinopelte dryina</i> )	1	0	0	0
Bacterial Leaf Scorch (BLS) ( <i>Xylella fastidiosa</i> (BLS))	1	0	0	0
<b>Oak, Shumard [texas; spanish] (<i>Quercus shumardii</i>) 1</b>				
Bacterial Leaf Scorch (BLS) ( <i>Xylella fastidiosa</i> (BLS))	0	0	1	0
<b>Oak, Water (<i>Quercus nigra</i>) 5</b>				
Chemical Injury (Abiotic disorder)	0	0	1	0
Cultural/Environmental Problem (Abiotic disorder)	0	0	1	0
Oak Leaf Blister ( <i>Taphrina caerulescens</i> )	1	0	0	0
Pine Oak Gall Rust ( <i>Cronartium quercuum</i> )	1	0	0	0
Undetermined Injury or Pest (Identification Analysis)	0	0	0	1
<b>Oak, White (<i>Quercus alba</i>) 1</b>				
Smooth Patch ( <i>Aleurodiscus oakesii</i> )	0	0	1	0
<b>Oak, Willow (<i>Quercus phellos</i>) 5</b>				
Armored Scales (Family Diaspididae)	0	0	0	1
Cultural/Environmental Problem (Abiotic disorder)	0	0	1	0
Glyphosate Injury (Abiotic disorder)	0	0	1	0
Oak Twig Blight ( <i>Coryneum kunzei</i> )	2	0	0	0
<b>Oak, Turkey (<i>Quercus laevis</i>) 2</b>				
Actinopelte Leaf Spot ( <i>Actinopelte dryina</i> )	1	0	0	0
Cultural/Environmental Problem (Abiotic disorder)	0	0	1	0

	Confirmed	Not Detected	Suspected	Inconclusive
<b>Oak (Quercus sp./spp.) 6</b>				
Anthracnose (Discula quercina)	1	0	0	0
Compact Dodder (Cuscuta compacta)	1	0	0	0
Cultural/Environmental Problem (Abiotic disorder)	0	0	1	0
Insect Damage (Unidentified Insect)	0	0	0	1
Oak Leaf Blister (Taphrina caerulescens)	0	0	1	0
Ravenel's stinkhorn (Phallus ravenelii)	1	0	0	0
<b>Oleander (Nerium oleander) 9</b>				
Bacterial Leaf Scorch (BLS) (Xylella fastidiosa (BLS))	3	0	0	0
California Red Scale (CRS) (Aonidiella aurantii)	1	0	0	0
Dieback (Unidentified Fungus)	0	0	0	1
Dieback; Canker; Twig Blight (Botryosphaeria sp./spp.)	2	0	0	0
False Oleander Scale (Pseudalacaspis cockerelli)	1	0	0	0
Smooth Patch Fungus (Aleurodiscus oakesii)	1	0	0	0
<b>Osmanthus, Fortunes (Osmanthus x fortunei) 2</b>				
Dieback; Canker; Twig Blight (Botryosphaeria sp./spp.)	1	0	0	0
Transplant Shock; Stress (Abiotic disorder)	0	0	1	0
<b>Osmanthus, Holly (Osmanthus heterophyllus) 2</b>				
Phytophthora Blight; Dieback (Phytophthora nicotianae)	1	0	0	0
Spider Mites (Family Tetranychidae)	0	0	0	1
<b>Osmanthus, Tea Olive (Osmanthus fragrans) 4</b>				
Cultural/Environmental Problem (Abiotic disorder)	0	0	3	0
Low pH Damage (Abiotic disorder)	1	0	0	0
<b>Osmanthus (Osmanthus sp./spp.) 2</b>				
Nutrient Imbalance (Abiotic disorder)	0	0	1	0
Scorch (Abiotic disorder)	0	0	1	0
<b>Palm, Cabbage (Sabal palmetto) 3</b>				
Mechanical Damage (Abiotic disorder)	0	0	1	0
Scale Insect (Aulacaspis sp.)	1	0	0	0
Scale Insects (Order homoptera)	0	0	0	1
<b>Palm, Canary Island date (Phoenix canariensis) 4</b>				
Anthracnose; Colletotrichum Leaf Spot (Colletotrichum sp.)	1	0	0	0
Dieback; Canker; Twig Blight (Botryosphaeria sp./spp.)	1	0	0	0
Fusarium Wilt (Fusarium oxysporum)	1	0	0	0
Rachis Blight (Serenomyces phoenicis)	1	0	0	0
<b>Palm, Sabal; fan palm (Sabal sp./spp.) 4</b>				
Armored Scales (Family Diaspididae)	0	0	0	1
Phomopsis Rachis Rot (Phomopsis sp./spp.)	1	0	0	0
Rachis Blight; (Serenomyces sp./spp.)	1	0	0	0
Twospotted Spider Mite (Tetranychus urticae)	1	0	0	0
<b>Palm, Windmill (Trachycarpus fortunei) 1</b>				
Cultural/Environmental Problem (Abiotic disorder)	0	0	1	0

	Confirmed	Not Detected	Suspected	Inconclusive
<b>Pansy (<i>Viola wittrockiana</i>) 8</b>				
Chemical; Environmental Injury (Abiotic disorder)	0	0	1	0
Cultural/Environmental Problem (Abiotic disorder)	0	0	1	0
Poor Root Development (Abiotic disorder)	2	0	0	0
Twospotted Spider Mite ( <i>Tetranychus urticae</i> )	1	0	0	0
<b>Penstemon (beard-tongue) (<i>Penstemon</i> sp./spp.) 15</b>				
Cultural/Environmental Problem (Abiotic disorder)	0	0	0	0
Impatiens Necrotic Spot (Impatiens Necrotic Spot Virus (INSV))	2	5	0	0
Leaf Spot (Unidentified Fungus)	0	0	0	1
Phytophthora Stem Rot ( <i>Phytophthora</i> sp./spp.)	1	0	0	0
Tobamovirus Group (Tobamovirus Group)	0	1	0	0
Tomato Ringspot (Tomato Ringspot Virus (ToRSV))	0	1	0	0
Tomato Spotted Wilt (Tomato Spotted Wilt Virus (TSWV))	0	2	0	0
Undetermined Injury or Pest (Identification Analysis)	0	0	0	1
<b>Peony (<i>Paeonia</i> sp./spp.) 12</b>				
Mechanical Damage (Abiotic disorder)	0	0	1	0
Root Knot Nematodes ( <i>Meloidogyne</i> sp./spp.)	0	0	1	0
Thielaviopsis Stem Rot ( <i>Ceratocystis</i> ( <i>Thielaviopsis</i> ) <i>paradoxa</i> )	1	0	0	0
<b>Perennial Phlox (<i>Phlox paniculata</i>) 1</b>				
Black Root Rot ( <i>Thielaviopsis basicola</i> / <i>Chalara elegans</i> )	1	0	0	0
<b>Phlox Moss (pink phlox) (<i>Phlox subulata</i>) 9</b>				
Algae (General)	0	0	0	1
Black Root Rot ( <i>Thielaviopsis basicola</i> / <i>Chalara elegans</i> )	1	0	0	0
Cultural/Environmental Problem (Abiotic disorder)	1	0	2	0
Impatiens Necrotic Spot (Impatiens Necrotic Spot Virus (INSV))	1	0	0	0
Phoma Blight; Dieback; Rot ( <i>Phoma</i> sp./spp.)	1	0	0	0
Tomato Spotted Wilt (Tomato Spotted Wilt Virus (TSWV))	2	0	0	0
<b>Pincushion Flower (<i>Scabiosa</i> sp./spp.) 1</b>				
Rhizoctonia Foliar/ Aerial/ Web Blight ( <i>Rhizoctonia solani</i> )	1	0	0	0
<b>Pine, Lacebark (<i>Pinus bungeana</i>) 2</b>				
Cultural/Environmental Problem (Abiotic disorder)	0	0	1	0
Sphaeropsis Dieback ( <i>Sphaeropsis</i> sp./spp.)	1	0	0	0
<b>Pine, Limber (<i>Pinus flexilis</i>) 1</b>				
Dieback; Canker; Twig Blight ( <i>Botryosphaeria</i> sp./spp.)	1	0	0	0
<b>Pine, Loblolly (<i>Pinus taeda</i>) 7</b>				
Annosus Root Rot ( <i>Heterobasidion annosum</i> / <i>Fomes annosus</i> )	0	0	0	1
Herbicide Injury; Exposure (Abiotic disorder)	0	0	1	0

	Confirmed	Not Detected	Suspected	Inconclusive
<b>Pine, Loblolly (<i>Pinus taeda</i>) 7</b>				
Pine Webworm ( <i>Tetralopa robustella</i> )	1	0	0	0
Red Root and Butt Rot ( <i>Phaeolus (Polyporus) schweinitzii</i> )	0	0	1	0
Root Rot ( <i>Ganoderma sp./spp.</i> )	0	0	1	0
Star Earthball Mushroom ( <i>Scleroderma polyrhizum</i> )	1	0	0	0
Scolytid Beetle ( <i>Hylastes sp./spp.</i> )	1	0	0	0
<b>Pine, Longleaf (<i>Pinus palustris</i>) 1</b>				
Sap Stain/ Wilt ( <i>Leptographium sp./spp.</i> )	1	0	0	0
<b>Pine (<i>Pinus sp./spp.</i>) 3</b>				
Pine Needle Scale ( <i>Chionaspis pinifoliae</i> )	1	0	0	0
Twospotted Spider Mite ( <i>Tetranychus urticae</i> )	1	0	0	0
<b>Pinks (<i>Dianthus sp./spp.</i>) 2</b>				
Bacterial Blight (Unidentified Bacteria)	0	0	0	1
Fusarium Basal Rot ( <i>Fusarium sp./spp.</i> )	1	0	0	0
<b>Poinsettia (<i>Euphorbia pulcherrima</i>) 2</b>				
Cultural/Environmental Problem (Abiotic disorder)	0	0	1	0
Ethylene Exposure (Abiotic disorder)	0	0	1	0
<b>Purple Queen (<i>Setcreasea purpurea</i>) 1</b>				
Low pH; Nutrient Imbalance (Abiotic disorder)	1	0	0	0
<b>Red-tip Photinia (<i>Photinia fraseri</i>) 2</b>				
Entomosporium Leaf Spot ( <i>Entomosporium sp./spp.</i> )	1	0	0	0
Herbicide Injury; Exposure (Abiotic disorder)	0	0	1	0
<b>Redbud, Eastern (<i>Cercis canadensis</i>) 3</b>				
High pH Damage (Abiotic disorder)	1	0	0	0
Root Problems (Abiotic disorder)	0	0	1	0
Dieback; Canker; Twig Blight ( <i>Botryosphaeria sp./spp.</i> )	1	0	0	0
<b>Rhododendron (<i>Rhododendron sp./spp.</i>) 4</b>				
Leaf Spot ( <i>Pseudocercospora sp./spp.</i> )	2	0	0	0
Macrophoma Leaf Spot ( <i>Macrophoma sp./spp.</i> )	1	0	0	0
Phomopsis Dieback; Tip Blight; Canker ( <i>Phomopsis sp./spp.</i> )	1	0	0	0
<b>Rice-paper Plant (<i>Tetrapanax papyrifer</i>) 1</b>				
Fusarium Stem Rot ( <i>Fusarium sp./spp.</i> )	1	0	0	0
<b>Rose, Tea (<i>Rosa odorata</i>) 1</b>				
Anthracoise; Colletotrichum Leaf Spot ( <i>Colletotrichum sp./spp.</i> )	1	0	0	0
<b>Rose (<i>Rosa sp./spp.</i>) 24</b>				
Armillaria Root Rot ( <i>Armillaria (Armillariella) sp./spp.</i> )	1	0	0	0
Black Spot (Rose) ( <i>Diplocarpon (Marssonina) rosae</i> )	2	0	0	0
Chemical; Environmental Injury (Abiotic disorder)	0	0	2	0
<b>Rose (<i>Rosa sp./spp.</i>) 24</b>				
Coreid Bug ( <i>Leptoglossus clypealis</i> )	1	0	0	0
Crown Gall ( <i>Agrobacterium sp./spp.</i> )	0	0	1	0

	Confirmed	Not Detected	Suspected	Inconclusive
<b>Rose (<i>Rosa</i> sp./spp.) 24</b>				
Cultural/Environmental Problem (Abiotic disorder)	0	0	1	0
Flower Thrips ( <i>Frankliniella tritici</i> )	1	0	0	0
Herbicide Drift (Abiotic disorder)	0	0	1	0
Phomopsis Dieback; Tip Blight; Canker ( <i>Phomopsis</i> sp./spp.)	1	0	0	0
Powdery Mildew ( <i>Oidium</i> sp./spp.)	1	0	0	0
Rose Canker ( <i>Coniothyrium</i> sp./spp.)	1	0	0	0
Rose Downy Mildew ( <i>Peronospora sparsa</i> )	3	0	0	0
Rose Rosette Disease (Rose rosette-associated virus (RRaV))	0	1	3	0
Twospotted Spider Mite ( <i>Tetranychus urticae</i> )	1	0	0	0
Western Flower Thrips ( <i>Frankliniella occidentalis</i> )	2	0	2	0
<b>Rose-of-sharon (shrub-althea) (<i>Hibiscus syriacus</i>) 1</b>				
Chemical; Environmental Injury (Abiotic disorder)	0	0	1	0
<b>Russian Sage (<i>Perovskia atriplicifolia</i>) 8</b>				
Botrytis Blight ( <i>Botrytis</i> sp./spp.)	4	0	0	0
Cultural/Environmental Problem (Abiotic disorder)	0	0	1	0
Freeze; Frost; Cold Damage (Abiotic disorder)	0	0	2	0
Tissue proliferation; callus (Abiotic disorder)	1	0	0	0
<b>Sago Palm (<i>Cycas revoluta</i>) 6</b>				
Leaf Spot ( <i>Pestalotiopsis</i> ( <i>Pestalotia</i> ) sp./spp.)	1	0	0	0
Manganese Deficiency (Abiotic disorder)	0	0	1	0
Nutrient Imbalance (Abiotic disorder)	0	0	1	0
Nutritional Deficiency (Abiotic disorder)	0	0	3	0
<b>Salvia (<i>Salvia nemerosa</i>) 1</b>				
Natural Senescence (Abiotic disorder)	0	0	1	0
<b>Salvia (sage) (<i>Salvia</i> sp./spp.) 3</b>				
Chemical; Environmental Injury (Abiotic disorder)	0	0	1	0
Leaf Blight; Leaf Spot ( <i>Botrytis</i> sp./spp.)	1	0	0	0
Natural Senescence (Abiotic disorder)	1	0	0	0
<b>Seven Son's flower tree (<i>Heptacodium</i> sp./spp.) 1</b>				
Root Problems (Abiotic disorder)	0	0	1	0
<b>Shasta Daisy (<i>Leucanthemum x superbum</i>) 1</b>				
Fusarium Wilt ( <i>Fusarium oxysporum</i> )	0	0	1	0
<b>Shasta Daisy (<i>Leucanthemum</i> sp./spp.) 1</b>				
Alternaria Leaf Spot ( <i>Alternaria</i> sp./spp.)	1	0	0	0
<b>Shell Ginger (<i>Alpinia zerumbet</i>) 2</b>				
Anthraxnose; Colletotrichum Leaf Spot ( <i>Colletotrichum</i> sp./spp.)	1	0	0	0
Natural Senescence (Abiotic disorder)	0	0	1	0
<b>Spirea (<i>Spiraea</i> sp./spp.) 1</b>				
Armillaria Root Rot ( <i>Armillaria</i> ( <i>Armillariella</i> ) sp./spp.)	1	0	0	0

	Confirmed	Not Detected	Suspected	Inconclusive
<b>Stoke's Aster (<i>Stokesia laevis</i>) 1</b>				
Dieback/ Stem Rot ( <i>Sclerotinia sclerotiorum</i> )	1	0	0	0
<b>Stonecrop (<i>Sedum sp./spp.</i>) 3</b>				
Chemical; Environmental Injury (Abiotic disorder)	0	0	1	0
Glyphosate Injury (Abiotic disorder)	1	0	0	0
Poor Growing Conditions (Abiotic disorder)	1	0	0	0
<b>Sweetgum, American (<i>Liquidambar styraciflua</i>) 1</b>				
Herbicide Injury; Exposure (Abiotic disorder)	0	0	1	0
<b>Tulip Tree (<i>Liriodendron tulipifera</i>) 2</b>				
Phaeoisariopsis Leaf Spot ( <i>Phaeoisariopsis sp.</i> )	1	0	0	0
Yellow-poplar Weevil ( <i>Odontopus calceatus</i> )	0	0	1	0
<b>Velvet Rose (pinwheel) (<i>Aeonium sp./spp.</i>) 1</b>				
Mechanical Damage (Abiotic disorder)	1	0	0	0
<b>Verbena, Rose (<i>Verbena canadensis</i>) 1</b>				
Cultural/Environmental Problem (Abiotic disorder)	0	0	1	0
<b>Veronica, Speedwell (<i>Veronica sp./spp.</i>) 3</b>				
Basal Shoot Proliferation ( <i>Rhodococcus fascians</i> )	1	0	0	0
Darkwinged Fungus Gnats (Family <i>Sciaridae sp./spp.</i> )	0	0	0	1
Ramularia Leaf Spot ( <i>Ramularia sp./spp.</i> )	1	0	0	0
<b>Viburnum, Japanese (<i>Viburnum japonica</i>) 2</b>				
Anthracnose; <i>Colletotrichum</i> Leaf Spot ( <i>Colletotrichum sp.</i> )	1	0	0	0
Cultural/Environmental Problem (Abiotic disorder)	0	0	1	0
<b>Viburnum, Sandankwa (<i>Viburnum suspensum</i>) 2</b>				
Cultural/Environmental Problem (Abiotic disorder)	0	0	2	0
<b>Viburnum (<i>Viburnum sp./spp.</i>) 1</b>				
Cultural/Environmental Problem (Abiotic disorder)	0	0	1	0
<b>Vinca, Greater Periwinkle (<i>Vinca major</i>) 3</b>				
<i>Alternaria</i> Leaf Spot ( <i>Alternaria sp./spp.</i> )	1	0	0	0
Mechanical Damage (Abiotic disorder)	0	0	1	0
Stem Rot; Dieback; Canker ( <i>Botryodiplodia sp./spp.</i> )	1	0	0	0
<b>Violas (violet; pansy) (<i>Viola sp./spp.</i>) 13</b>				
Aphids (Plant Lice) (Family <i>Aphididae</i> )	0	0	0	1
Black Root Rot ( <i>Thielaviopsis basicola/Chalara elegans</i> )	5	0	0	0
<i>Botrytis</i> Blight ( <i>Botrytis sp./spp.</i> )	2	0	0	0
<i>Cercospora</i> Leaf Spot ( <i>Cercospora sp./spp.</i> )	1	0	0	0
Freeze; Frost; Cold Damage (Abiotic disorder)	0	0	1	0
<i>Phytophthora</i> Canker; Dieback ( <i>Phytophthora cactorum</i> )	1	0	0	0
<i>Pythium</i> Root and/or Crown Rot ( <i>Pythium sp./spp.</i> )	2	0	0	0
<b>Wallflower (<i>Erysimum linifolium</i>) 1</b>				
Bacterial Blight ( <i>Xanthomonas campestris</i> )	0	0	1	0
<b>Wax Begonia (<i>Begonia semperflorens-cultorum</i>) 2</b>				
<i>Colletotrichum</i> Stem Decay ( <i>Colletotrichum sp./spp.</i> )	1	0	0	0
Excessive Water (Abiotic disorder)	0	0	1	0

	Confirmed	Not Detected	Suspected	Inconclusive
<b>Wax Myrtle, Southern Bayberry; (<i>Myrica cerifera</i>) 6</b>				
Canker; Stem Blight; Dieback ( <i>Botryosphaeria dothidea</i> )	2	0	0	0
Dieback; Canker; Twig Blight ( <i>Botryosphaeria</i> sp./spp.)	3	0	0	0
Mechanical Damage (Abiotic disorder)	1	0	0	0
<b>Yew (<i>Taxus</i> sp./spp.) 1</b>				
Oedema; Edema (Abiotic disorder)	0	0	1	0



## Diagnoses/Identifications for Turfgrasses

	Confirmed	Not Detected	Suspected	Inconclusive
<b>Bentgrass, Creeping (<i>Agrostis palustris</i>) 2*</b>				
Leptosphaerulina Leaf Blight ( <i>Leptosphaerulina australis</i> )	1	0	0	0
Pythium Root Dysfunction ( <i>Pythium</i> sp./spp.)	1	0	0	0
<b>Bentgrass, Creeping (<i>Agrostis stolonifera</i>) 1</b>				
Cultural/Environmental Problem (Abiotic disorder)	0	0	1	0
<b>Bentgrass (<i>Agrostis</i> sp./spp.) 11</b>				
Algae (General)	1	0	0	0
Anthracnose ( <i>Colletotrichum graminicola</i> )	1	0	0	0
Cultural/Environmental Problem (Abiotic disorder)	1	0	2	0
Dead Spot ( <i>Ophiosphaerella agrostis</i> )	0	0	1	0
Dollar Spot ( <i>Sclerotinia homeocarpa</i> )	1	0	0	0
Environmental Stress; Problem (Abiotic disorder)	0	0	1	0
Moss (General)	1	0	0	0
Root Problems (Abiotic disorder)	0	0	2	0
<b>Bermudagrass (<i>Cynodon dactylon</i>) 74</b>				
Algae (General)	2	0	0	0
Basidiomycete (Unidentified Basidiomycete)	0	0	0	1
Bermudagrass Mite ( <i>Eriophyes cynodoniensis</i> )	2	0	0	0
Bermudagrass Scale ( <i>Odonaspis ruthae</i> )	0	0	1	0
Broomsedge Bluestem ( <i>Andropogon virginicus</i> )	2	0	0	0
Cultural/Environmental Problem (Abiotic disorder)	3	0	7	0
Curvularia Blight; Leaf Spot ( <i>Curvularia</i> sp./spp.)	1	0	0	0
Dallisgrass ( <i>Paspalum dilatatum</i> )	1	0	0	0
Dense Thatch Layer (Abiotic disorder)	3	0	0	0
Dollar Spot ( <i>Sclerotinia homeocarpa</i> )	1	0	1	0
Excessive Water (Abiotic disorder)	1	0	0	0
Helminthosporium Leaf Spot ( <i>Cochliobolus</i> ( <i>Bipolaris</i> ) <i>cynodontis</i> )	2	0	0	0
Insect Damage (Unidentified Insect)	0	0	0	2
Japanese-clover ( <i>Kummerowia striata</i> )	1	0	0	0
Leaf Rust; rust ( <i>Puccinia</i> sp./spp.)	2	0	0	0
Leaf Spot ( <i>Exserohilum</i> sp./spp.)	2	0	0	0
Leaf Spot; Leaf Blight ( <i>Exserohilum rostratum</i> / <i>Setosphaeria rostrata</i> )	6	0	0	0
Moisture Stress (Abiotic disorder)	0	0	1	0
Northern Dewberry ( <i>Rubus flagellaris</i> )	1	0	0	0
Perennial Ryegrass ( <i>Lolium perenne</i> )	2	0	0	0
Pythium Blight; Cottony Blight ( <i>Pythium</i> sp./spp.)	1	0	0	0
Reversed Clover ( <i>Trifolium resupinatum</i> )	2	0	0	0

\* Number after name = Number of diagnostic entries

	Confirmed	Not Detected	Suspected	Inconclusive
<b>Bermudagrass (Cynodon dactylon) 74</b>				
Root Decline of Warm Season Grasses				
(Gaeumannomyces graminis var. graminis)	3	0	2	0
Root Knot Nematodes (Meloidogyne sp./spp.)	4	0	0	0
Root Problems (Abiotic disorder)	2	0	2	1
Soil Compaction (Abiotic disorder)	3	0	0	0
Sting Nematodes (Belonolaimus sp./spp.)	1	0	0	0
Superficial Fairy Ring (Various Fungi)	1	0	0	0
Unidentified fungus (Unidentified Fungus)	0	0	0	1
Vasey's Grass (Paspalum urvillei)	2	0	0	0
Wild Garlic (Allium vineale)	1	0	0	0
Poorjoe (Diodia teres)	1	0	0	0
Southern crabgrass (Digitaria ciliaris)	1	0	0	0
<b>Bermudagrass (Cynodon sp./spp.) 33</b>				
Bermuda Grass (Cynodon sp./spp.)	1	0	0	0
Chemical Injury (Abiotic disorder)	1	0	0	0
Dense Thatch Layer (Abiotic disorder)	2	0	0	0
Dollar Spot (Sclerotinia homeocarpa)	1	0	0	0
European Field Pansy (Viola arvensis)	1	0	0	0
Ground Beetle (Harpalus sp./spp.)	1	0	0	0
Helminthosporium Leaf Spot (Cochliobolus (Bipolaris) cynodontis)	1	0	0	0
Herbicide Carryover (Abiotic disorder)	0	0	1	0
Insects (Class insecta)	0	0	0	1
Insufficient Light (Abiotic disorder)	2	0	0	0
Leaf Rust; rust (Puccinia sp./spp.)	5	0	0	0
Leaf Spot (Bipolaris sp./spp.)	1	0	0	0
Low pH; Nutrient Imbalance (Abiotic disorder)	1	0	0	0
Perennial Ryegrass (Lolium perenne)	1	0	0	0
Poor Leaf Emergence (Abiotic disorder)	0	0	1	0
Rattail Fescue (Vulpia myuros)	1	0	0	0
Root Problems (Abiotic disorder)	0	0	0	1
Slender Parsley Piert (Aphanes microcarpa)	1	0	0	0
Soil Compaction (Abiotic disorder)	1	0	0	0
Spring Dead Spot (Gaeumannomyces graminis var. graminis)	0	0	1	0
Spring Dead Spot (Ophiosphaerella sp./spp.)	0	0	1	0
Sticky Chickweed (Cerastium glomeratum)	1	0	0	0
Sweet Vernal Grass (Anthoxanthum odoratum)	1	0	0	0
Toad Rush (Juncus bufonius)	1	0	0	0
Vasey's Grass (Paspalum urvillei)	1	0	0	0
Cudweed (Pseudognaphalium)	1	0	0	0
<b>Centipedegrass (Eremochloa ophiuroides) 206</b>				
Annual Bluegrass (Poa annua)	1	0	0	0
Annual Trampweed (Facelis retusa)	1	0	0	0

	Confirmed	Not Detected	Suspected	Inconclusive
<b>Centipedegrass (<i>Eremochloa ophiuroides</i>) 206</b>				
Anthracnose ( <i>Colletotrichum graminicola</i> )	5	0	0	0
Brown Patch ( <i>Rhizoctonia</i> sp./spp.)	20	0	0	0
Carolina Leaf-flower ( <i>Phyllanthus caroliniensis</i> )	1	0	0	0
Colonial Dwarf-dandelion ( <i>Krigia dandelion</i> )	1	0	0	0
Crabgrass ( <i>Digitaria</i> sp./spp.)	1	0	0	0
Crambus Sod Webworm ( <i>Crambus</i> sp./spp.)	1	0	0	0
Cultural/Environmental Problem (Abiotic disorder)	6	0	55	0
Dense Thatch Layer (Abiotic disorder)	1	0	0	0
Dollar Spot ( <i>Sclerotinia homeocarpa</i> )	3	0	0	0
Drainage Problem (Abiotic disorder)	1	0	0	0
Earthworms (Phylum Annelida; Subclass Oligochaeta)	0	0	1	0
Excessive Water (Abiotic disorder)	10	0	3	0
Fairy Ring (Various Fungi)	0	0	1	0
Florida Betony ( <i>Stachys floridana</i> )	1	0	0	0
Fusarium Basal Rot ( <i>Fusarium</i> sp./spp.)	1	0	0	0
Golden Bamboo ( <i>Phyllostachys aurea</i> )	1	0	0	0
Herbicide Injury; Exposure (Abiotic disorder)	0	0	3	0
Hydrophobic soil (Abiotic disorder)	0	0	1	0
Insufficient Light (Abiotic disorder)	3	0	1	0
Large Patch ( <i>Rhizoctonia solani</i> /Thanatephorus cucumeris)	6	0	0	0
Leaf Rust; rust ( <i>Puccinia</i> sp./spp.)	1	0	0	0
Low pH; Nutrient Imbalance (Abiotic disorder)	5	0	1	0
Natural Senescence (Abiotic disorder)	0	0	1	0
Nematode Damage (Unidentified Nematode)	0	0	1	0
Nutrient Imbalance (Abiotic disorder)	1	0	2	0
Nutritional Analysis (Abiotic disorder)	0	0	1	0
Nutritional Deficiency (Abiotic disorder)	3	0	6	0
Perennial Ryegrass ( <i>Lolium perenne</i> )	1	0	0	0
Perionyx excavatus (Blue worm) ( )	0	0	1	0
Phosphorus Deficiency (Abiotic disorder)	1	0	1	0
Poor Leaf Emergence (Abiotic disorder)	17	0	10	0
Poor Root Development (Abiotic disorder)	1	0	0	0
Pythium Root Dysfunction ( <i>Pythium</i> sp./spp.)	1	0	0	0
<i>Rhizoctonia</i> Leaf Spot and/or Leaf Blight ( <i>Rhizoctonia</i> sp./spp.)	3	0	0	0
Rhodesgrass Mealybug ( <i>Antonina graminis</i> )	2	0	0	0
Root Problems (Abiotic disorder)	4	0	1	0
Soil Compaction (Abiotic disorder)	6	0	0	0
Spring Vetch ( <i>Vicia lathyroides</i> )	1	0	0	0
Sting Nematodes ( <i>Belonolaimus</i> sp./spp.)	1	0	0	0
Unknown Abiotic Disorder (Abiotic disorder)	0	0	0	1
Virginia Buttonweed ( <i>Diodia virginiana</i> )	1	0	0	0

	Confirmed	Not Detected	Suspected	Inconclusive
<b>Centipedegrass (<i>Eremochloa ophiuroides</i>) 206</b>				
White Grubs (Scarab Beetles) (Family Scarabaeidae)	1	0	0	0
<b>Clover (in lawn) (<i>Trifolium</i> sp./spp.) 1</b>				
Slime Mold (Class Myxomycetes; Myxomycota)	1	0	0	0
<b>Fescue, Tall (<i>Festuca arundinacea</i>) 13</b>				
Anthracnose ( <i>Colletotrichum graminicola</i> )	3	0	0	0
Ascochyta Blight ( <i>Ascochyta</i> sp./spp.)	1	0	0	0
Brown Patch ( <i>Rhizoctonia</i> sp./spp.)	2	0	0	0
Brown Patch ( <i>Rhizoctonia solani</i> /Thanatephorus cucumeris)	1	0	0	0
Dollar Spot ( <i>Sclerotinia homeocarpa</i> )	1	0	0	0
Excessive Water (Abiotic disorder)	1	0	0	0
Leaf Rust; rust ( <i>Puccinia</i> sp./spp.)	3	0	0	0
True Sedge ( <i>Carex</i> sp./spp.)	1	0	0	0
<b>Fescues (<i>Festuca</i> spp) 25</b>				
Anthracnose ( <i>Colletotrichum graminicola</i> )	4	0	0	0
Ascochyta Leaf Spot ( <i>Ascochyta</i> sp./spp.)	1	0	0	0
Bermudagrass ( <i>Cynodon dactylon</i> )	1	0	0	0
Broadleaf Signalgrass ( <i>Urochloa</i> ( <i>Brachiaria</i> ) <i>platyphyla</i> )	1	0	0	0
Brown Patch ( <i>Rhizoctonia</i> sp./spp.)	4	0	0	0
Clover ( <i>Trifolium</i> sp.)	2	0	0	0
Cultural/Environmental Problem (Abiotic disorder)	0	0	1	0
Excessive Water (Abiotic disorder)	2	0	0	0
Gray Leaf Spot ( <i>Magnaporthe</i> (ana. <i>Pyricularia</i> ) <i>grisea</i> )	1	0	0	0
Hairy Cat's Ear ( <i>Hypochaeris radicata</i> )	1	0	0	0
Henbit ( <i>Lamium amplexicaule</i> )	1	0	0	0
Leaf Rust; rust ( <i>Puccinia</i> sp./spp.)	1	0	0	0
Lindheimer Panicgrass ( <i>Dichantheium acuminata</i> var.)	1	0	0	0
Mouseear Hawkweed ( <i>Hieracium pilosella</i> )	1	0	0	0
Pythium Blight; Cottony Blight ( <i>Pythium</i> sp./spp.)	1	0	0	0
Woolly Croton ( <i>Croton capitatus</i> )	1	0	0	0
Yellow Patch ( <i>Rhizoctonia cerealis</i> / <i>Ceratobasidium cereale</i> )	1	0	0	0
<b>Seashore Paspalum (<i>Paspalum vaginatum</i>) 1</b>				
Dollar Spot ( <i>Sclerotinia homeocarpa</i> )	1	0	0	0
<b>St. Augustinegrass (<i>Stenotaphrum secundatum</i>) 86</b>				
Brown Patch ( <i>Rhizoctonia</i> sp./spp.)	2	0	0	0
Chinch Bug Complex ( <i>Blissus</i> sp./spp.)	12	0	0	0
Cultural/Environmental Problem (Abiotic disorder)	1	0	9	0
Excessive Water (Abiotic disorder)	0	0	1	0
Fairy Ring (Various Fungi)	0	0	1	0
Field Burrweed; Spurweed ( <i>Soliva sessilis</i> (pterosperma))	1	0	0	0
Flat-top Mille Grains ( <i>Oldenlandia corymbosa</i> )	1	0	0	0

	Confirmed	Not Detected	Suspected	Inconclusive
<b>St. Augustinegrass (<i>Stenotaphrum secundatum</i>) 86</b>				
Gray Leaf Spot ( <i>Magnaporthe</i> (ana. <i>Pyricularia</i> ) <i>grisea</i> )	31	0	5	0
Iron Deficiency (Abiotic disorder)	0	0	3	0
Large Patch ( <i>Rhizoctonia solani</i> / <i>Thanatephorus cucumeris</i> )	6	0	0	0
Low pH; Nutrient Imbalance (Abiotic disorder)	2	0	0	0
Lowspike Sedge ( <i>Kyllinga pumila</i> )	1	0	0	0
Nutrient Imbalance (Abiotic disorder)	0	0	2	0
Nutritional Deficiency (Abiotic disorder)	0	0	1	0
Poor Leaf Emergence (Abiotic disorder)	2	0	1	0
Root Problems (Abiotic disorder)	1	0	0	0
Zinc Toxicity (Abiotic disorder)	1	0	0	0
<b>Zoysia (japanese lawngrass) (<i>Zoysia japonica</i>) 3</b>				
Cultural/Environmental Problem (Abiotic disorder)	0	0	1	0
Curvularia Blight; Leaf Spot ( <i>Curvularia</i> sp./spp.)	1	0	0	0
Leaf Rust; rust ( <i>Puccinia</i> sp./spp.)	1	0	0	0
<b>Zoysia Grass (<i>Zoysia</i> sp./spp.) 75</b>				
Anthrachnose ( <i>Colletotrichum graminicola</i> )	2	0	0	0
Brown Patch ( <i>Rhizoctonia</i> sp./spp.)	2	0	0	0
Cultural/Environmental Problem (Abiotic disorder)	4	0	9	0
Curvularia Blight; Leaf Spot ( <i>Curvularia</i> sp./spp.)	7	0	0	0
Dense Thatch Layer (Abiotic disorder)	3	0	0	0
Dollar Spot ( <i>Sclerotinia homeocarpa</i> )	12	0	0	0
Excessive Water (Abiotic disorder)	4	0	1	0
Fairy Ring (Various Fungi)	0	0	1	0
Herbicide Injury; Exposure (Abiotic disorder)	1	0	1	0
Insect Damage (Unidentified Insect)	0	0	0	1
Large Patch ( <i>Rhizoctonia solani</i> / <i>Thanatephorus cucumeris</i> )	1	0	0	0
Leaf Rust; rust ( <i>Puccinia</i> sp./spp.)	9	0	0	0
Low pH; Nutrient Imbalance (Abiotic disorder)	1	0	0	0
Nutritional Deficiency (Abiotic disorder)	1	0	0	0
Phosphorus Deficiency (Abiotic disorder)	1	0	0	0
Poor Leaf Emergence (Abiotic disorder)	1	0	2	0
Rhodesgrass Mealybug ( <i>Antonina graminis</i> )	1	0	0	0
Root Problems (Abiotic disorder)	4	0	1	0
Sheath Blight ( <i>Rhizoctonia</i> sp./spp.)	1	0	0	0
Soil Compaction (Abiotic disorder)	3	0	0	0
Spring Dead Spot ( <i>Ophiosphaerella</i> sp./spp.)	0	0	1	0

## Diagnoses/Identifications for Fruits and Nuts

	Confirmed	Not Detected	Suspected	Inconclusive
<b>Apple, Common (<i>Malus sylvestris</i>) 1*</b>				
Chemical; Environmental Injury (Abiotic disorder)	0	0	1	0
<b>Apple, Domestic (<i>Malus domestica</i>) 1</b>				
Chemical; Environmental Injury (Abiotic disorder)	0	0	1	0
<b>Blackberry (<i>Rubus sp./spp.</i>) 2</b>				
Blackberry Psyllid ( <i>Trioza tripunctata</i> )	0	0	1	0
Winged Elm ( <i>Ulmus alata</i> )	1	0	0	0
<b>Blueberry, Highbush (<i>Vaccinium corymbosum</i>) 5</b>				
Bacterial Leaf Scorch (BLS) ( <i>Xylella fastidiosa</i> (BLS))	0	2	0	0
Oedema; Edema (Abiotic disorder)	2	0	0	0
Phomopsis Canker and Twig Blight ( <i>Diaporthe</i> ( <i>Phomopsis</i> ) <i>vaccinii</i> )	1	0	0	0
<b>Blueberry (<i>Vaccinium sp./spp.</i>) 2</b>				
Cultural/Environmental Problem (Abiotic disorder)	0	0	1	0
Nutrient Imbalance (Abiotic disorder)	0	0	1	0
<b>Fig (<i>Ficus carica</i>) 1</b>				
Environmental Stress; Problem (Abiotic disorder)	0	0	1	0
<b>Grape (<i>Vitis sp./spp.</i>) 12</b>				
Armillaria Root Rot ( <i>Armillaria</i> ( <i>Armillariella</i> ) <i>sp./spp.</i> )	1	0	0	0
Black Rot ( <i>Guignardia bidwellii</i> / <i>Phyllosticta ampellicida</i> )	1	0	0	0
Canker, Dieback ( <i>Fusicoccum sp./spp.</i> )	5	0	0	0
Dieback ( <i>Neofusicoccum parvum</i> )	0	0	1	0
Grapevine Pierce's Disease (PD) ( <i>Xylella fastidiosa</i> (PD))	0	0	1	0
Petri Disease ( <i>Phaeoacremonium sp./spp.</i> )	1	0	0	0
Phomopsis Dieback; Canker ( <i>Phomopsis sp./spp.</i> )	2	0	0	0
<b>Lemon (<i>Citrus limon</i>) 1</b>				
Citrus Leafminer (CLM) ( <i>Phyllocnistis citrella</i> )	1	0	0	0
<b>Lime (<i>Citrus limetta</i>) 1</b>				
Citrus Leafminer (CLM) ( <i>Phyllocnistis citrella</i> )	0	0	1	0
<b>Muscadine Grape (<i>Vitis rotundifolia</i>) 1</b>				
Excessive Water (Abiotic disorder)	0	0	1	0
<b>Peach (<i>Prunus persica</i>) 12</b>				
Chemical; Environmental Injury (Abiotic disorder)	0	0	1	0
Constriction Canker ( <i>Fusicoccum amygdali</i> )	1	0	0	0
Cultural/Environmental Problem (Abiotic disorder)	0	0	1	0
Gummosis ( <i>Botryosphaeria dothidea</i> )	1	0	0	0
Herbicide Injury; Exposure (Abiotic disorder)	1	0	0	0
Noctuid Moths (Family Noctuidae)	0	3	0	1
Plum Curculio ( <i>Conotrachelus nenuphar</i> )	1	0	0	0
Pyralid Moths (Family Pyralidae)	0	0	0	1

\* Number after name = Number of diagnostic entries

	Confirmed	Not Detected	Suspected	Inconclusive
<b>Peach (<i>Prunus persica</i>) 12</b>				
Tortricid Moths (Family Tortricidae)	0	0	0	1
<b>Pear (<i>Pyrus communis</i>) 3</b>				
Cedar-Quince Rust ( <i>Gymnosporangium clavipes</i> )	1	0	0	0
Fire Blight ( <i>Erwinia amylovora</i> )	1	0	1	0
<b>Pecan (<i>Carya illinoensis</i>) 5</b>				
Pecan Leaf Phylloxera ( <i>Phylloxera notabilis</i> )	1	0	0	0
Pecan; Hickory Scab ( <i>Cladosporium caryigenum</i> )	2	0	0	0
Phylloxera <i>russellae</i> , Southern Pecan Leaf Phylloxera	1	0	0	0
Princess Tree; Royal Paulownia ( <i>Paulownia tomentosa</i> )	1	0	0	0
<b>Plum (<i>Prunus sp./spp.</i>) 2</b>				
Cultural/Environmental Problem (Abiotic disorder)	0	0	1	0
Lichens (Lichenes)	0	0	0	1
<b>Raspberry (<i>Rubus idaeus</i>) 2</b>				
Raspberry Yellow Rust ( <i>Phragmidium rubi-idaei</i> )	1	0	0	0
Unidentified Virus (Unidentified Virus)	0	0	0	1
<b>Strawberry Commercial (<i>Fragaria x ananassa</i>) 33</b>				
Anthracnose ( <i>Colletotrichum acutatum</i> )	1	0	0	0
Anthracnose ( <i>Colletotrichum gloeosporioides</i> / <i>Glomerella cingulata</i> )	2	0	0	0
Anthracnose Basal Rot; Crown Rot ( <i>Colletotrichum sp.</i> )	1	0	0	0
Anthracnose Fruit Rot ( <i>Colletotrichum acutatum</i> )	1	0	0	0
Botrytis Fruit Rot ( <i>Botrytis sp./spp.</i> )	1	0	0	0
Cultural/Environmental Problem (Abiotic disorder)	0	0	6	0
Fusarium Crown Rot ( <i>Fusarium oxysporum</i> )	2	0	0	0
Fusarium Root Rot ( <i>Fusarium sp./spp.</i> )	2	0	0	0
Fusarium Root; Crown Rot ( <i>Fusarium sp./spp.</i> )	1	0	0	0
Fusarium Wilt Complex ( <i>Fusarium sp./spp.</i> )	2	0	0	0
High Soluble Salt (Abiotic disorder)	1	0	0	0
Leaf Blotch ( <i>Gnomonia comari</i> / <i>Zythia fragariae</i> )	3	0	0	0
Leaf Scorch ( <i>Diplocarpon earlianum</i> / <i>Marssonina fragariae</i> )	2	0	0	0
Phomopsis Blight ( <i>Phomopsis sp./spp.</i> )	1	0	0	0
Phytophthora Crown: Root and/or Stem Rot ( <i>Phytophthora sp./spp.</i> )	1	0	0	0
Phytophthora Root and Crown Rot ( <i>Phytophthora cactorum</i> )	4	0	0	0
Strawberry Angular Leaf Spot; A ( <i>Xanthomonas fragariae</i> )	2	0	0	0
<b>Tangelo (<i>Citrus paradisi x reticulata</i>) 3</b>				
Citrus Greasy Spot ( <i>Mycosphaerella citri</i> )	0	0	1	0
Mite Damage (Unidentified Mite)	0	0	1	0

## Diagnoses/Identifications for Vegetables and Herbs

	Confirmed	Not Detected	Suspected	Inconclusive
<b>Arugula (<i>Eruca sativa</i>) 1*</b>				
Black Leg; Pythium Stem Rot ( <i>Pythium</i> sp./spp.)	1	0	0	0
<b>Cabbage (<i>Brassica oleracea</i> var. <i>capitata</i>) 3</b>				
Fusarium Stem Rot ( <i>Fusarium</i> sp./spp.)	1	0	0	0
Mechanical Damage (Abiotic disorder)	0	0	1	0
Pythium Root and/or Crown Rot ( <i>Pythium</i> sp./spp.)	1	0	0	0
<b>Cantaloupe (<i>Cucumis melo cantalupensis</i>) 2</b>				
Cercospora Leaf Spot ( <i>Cercospora</i> <i>citrullina</i> )	1	0	0	0
Cucurbit Downy Mildew ( <i>Pseudoperonospora cubensis</i> )	1	0	0	0
<b>Cucumber (<i>Cucumis sativus</i>) 15</b>				
Cucurbit Downy Mildew ( <i>Pseudoperonospora cubensis</i> )	2	0	0	0
Cultural/Environmental Problem (Abiotic disorder)	0	0	3	0
Fusarium Root Rot ( <i>Fusarium</i> sp./spp.)	1	0	0	0
Nutrient Imbalance (Abiotic disorder)	0	0	2	0
Nutritional Deficiency (Abiotic disorder)	0	0	2	0
Poor pollination (Abiotic disorder)	0	0	2	0
Pythium Root and/or Crown Rot ( <i>Pythium</i> sp./spp.)	1	0	0	0
Spider Mites (Family Tetranychidae)	1	0	0	0
Twospotted Spider Mite ( <i>Tetranychus urticae</i> )	1	0	0	0
<b>Green Bean; snap bean (<i>Phaseolus vulgaris</i>) 2</b>				
Cultural/Environmental Problem (Abiotic disorder)	0	0	1	0
Root Knot Nematodes ( <i>Meloidogyne</i> sp./spp.)	1	0	0	0
<b>Lavender (<i>Lavandula</i> sp./spp.) 15</b>				
Bacterial Blight ( <i>Xanthomonas campestris</i> )	1	0	3	0
Black Root Rot ( <i>Thielaviopsis basicola</i> / <i>Chalara elegans</i> )	1	0	0	0
Botrytis Blight ( <i>Botrytis</i> sp./spp.)	5	0	0	0
Cultural/Environmental Problem (Abiotic disorder)	0	0	4	0
<b>Lettuce (<i>Lactuca sativa</i>) 1</b>				
Nutrient Imbalance (Abiotic disorder)	0	0	1	0
<b>Napa; Chinese cabbage (<i>Brassica pekinensis</i>) 1</b>				
Black Leg; Pythium Stem Rot ( <i>Pythium</i> sp./spp.)	1	0	0	0
<b>Okra (<i>Abelmoschus esculentus</i>) 1</b>				
Cultural/Environmental Problem (Abiotic disorder)	0	0	1	0
<b>Radish (<i>Raphanus sativus</i>) 1</b>				
Spring Vetch ( <i>Vicia lathyroides</i> )	1	0	0	0
<b>Rosemary (<i>Rosmarinus officinalis</i>) 1</b>				
Spider Mites (Family Tetranychidae)	0	0	0	1
<b>Squash (<i>Cucurbita</i> sp./spp.) 2</b>				
Coreid Squash Bug ( <i>Anasa</i> sp./spp.)	1	0	0	0
Squash Vine Borer ( <i>Melittia cucurbitae</i> )	1	0	0	0

\* Number after name = Number of diagnostic entries



	Confirmed	Not Detected	Suspected	Inconclusive
<b>Tomato (<i>Lycopersicon esculentum</i>) 45</b>				
Bacterial Leaf Spot ( <i>Xanthomonas campestris</i> pv. vesicatoria)	0	0	1	0
Bacterial Stem Rot ( <i>Erwinia carotovora carotovora</i> )	0	0	1	0
Bacterial Wilt ( <i>Ralstonia solanacearum</i> )	2	0	0	0
Bollworm; Corn Earworm ( <i>Helicoverpa (Heliothis) zea</i> )	1	0	0	0
Chemical; Environmental Injury (Abiotic disorder)	0	0	1	0
Cultural/Environmental Problem (Abiotic disorder)	0	0	2	0
Early Blight; Leaf Spot ( <i>Alternaria solani</i> )	1	0	1	0
Excessive Water (Abiotic disorder)	1	0	0	0
Fusarium Wilt ( <i>Fusarium oxysporum</i> )	1	0	0	0
Fusarium Wilt Complex ( <i>Fusarium</i> sp./spp.)	1	0	0	0
Grey Leaf Spot ( <i>Stemphylium solani</i> )	2	0	0	0
Mechanical Damage (Abiotic disorder)	0	0	1	0
Nutritional Deficiency (Abiotic disorder)	1	0	0	0
Pythium Root and/or Crown Rot ( <i>Pythium</i> sp./spp.)	2	0	0	0
Scrambled-egg Slime Mold ( <i>Fuligo septica</i> )	1	0	0	0
Spider Mites (Family Tetranychidae)	1	0	0	0
Stink Bugs (Family Pentatomidae)	0	0	0	1
Thrips ( <i>Frankliniella</i> sp.)	1	0	0	0
Thrips Damage (Unidentified Thrips)	0	0	1	0
Tobacco Mosaic (Tobacco Mosaic Virus (TMV))	3	0	0	0
Tomato Russet Mite ( <i>Aculops lycopersici</i> )	1	0	0	0
Tomato Spotted Wilt (Tomato Spotted Wilt Virus (TSWV))	8	1	0	0
Twospotted Spider Mite ( <i>Tetranychus urticae</i> )	2	0	0	0
Western Flower Thrips ( <i>Frankliniella occidentalis</i> )	4	0	0	0
Whiteflies (Family Aleyrodidae)	2	0	0	0
<b>Turnip (<i>Brassica rapa</i>) 2</b>				
Cultural/Environmental Problem (Abiotic disorder)	0	0	1	0
White Leaf Spot; Gray Stem ( <i>Mycosphaerella (ana. Pseudocercospora) capsellae</i> )	1	0	0	0
<b>Watermelon (<i>Citrullus lanatus</i>) 11</b>				
Anthrachnose ( <i>Colletotrichum orbiculare</i> )	1	0	0	0
Cercospora Leaf Spot ( <i>Cercospora citrullina</i> )	1	0	0	0
Cercospora Leaf Spot ( <i>Cercospora</i> sp./spp.)	0	0	1	0
Cultural/Environmental Problem (Abiotic disorder)	0	0	1	0
Fusarium Root Rot ( <i>Fusarium</i> sp./spp.)	1	0	0	0
Fusarium Wilt ( <i>Fusarium oxysporum</i> )	1	0	0	0
Gummy Stem Blight ( <i>Didymella cucurbitacearum/ Phoma bryonae</i> )	3	0	0	0
Herbicide Injury; Exposure (Abiotic disorder)	0	0	1	0
Unidentified fungus (Unidentified Fungus)	0	0	0	1

## Diagnoses/Identifications on Field Crops, Pasture and Forage

	Confirmed	Not Detected	Suspected	Inconclusive
<b>Barley (<i>Hordeum</i> sp./spp.) 2*</b>				
Barley Net Blotch ( <i>Pyrenophora</i> (ana. <i>Drechslera</i> ) <i>teres</i> )	1	0	0	0
Spot Blotch ( <i>Bipolaris sorokiniana</i> / <i>Cochliobolus sativus</i> )	1	0	0	0
<b>Corn (<i>Zea mays</i>) 3</b>				
Northern Corn Leaf Blight; Leaf Spot ( <i>Exserohilum turcicum</i> / <i>Setosphaeria turcica</i> )	1	0	0	0
Phomopsis Leaf Spot ( <i>Phomopsis</i> sp./spp.)	2	0	0	0
<b>Cotton (<i>Gossypium hirsutum</i>) 30</b>				
Anthracnose; <i>Colletotrichum</i> Leaf Spot ( <i>Colletotrichum</i> sp.)	1	0	0	0
<i>Cercospora</i> Leaf Spot ( <i>Cercospora</i> sp./spp.)	3	0	0	0
<i>Corynespora</i> Leaf Spot ( <i>Corynespora cassiicola</i> )	20	0	0	0
<i>Corynespora</i> Leaf Spot ( <i>Corynespora</i> sp./spp.)	1	0	0	0
Leaf Spot ( <i>Cercospora gossypina</i> )	3	0	0	0
<i>Stemphylium</i> Leaf Spot ( <i>Stemphylium</i> sp.)	1	0	0	0
Weevils (Family <i>Curculionidae</i> )	0	1	0	0
<b>Field Corn (<i>Zea mays</i>) 2</b>				
Panicum; Fall ( <i>Panicum dichotomiflorum</i> )	0	0	1	0
Undetermined Injury or Pest (Identification Analysis)	0	0	0	1
<b>Jerusalem-artichoke (<i>Helianthus tuberosus</i>) 1</b>				
Southern Stem Rot ( <i>Sclerotium rolfsii</i> )	1	0	0	0
<b>Oats (<i>Avena sativa</i>) 5</b>				
Barley Yellow Dwarf (Barley Yellow Dwarf Virus (BYDV))	0	0	2	0
Cultural/Environmental Problem (Abiotic disorder)	0	0	1	0
Freeze; Frost; Cold Damage (Abiotic disorder)	1	0	0	0
Oat Leaf Spot; Seedling Blight ( <i>Pyrenophora</i> (ana. <i>Drechslera</i> ) <i>avenae</i> )	1	0	0	0
<b>Orchardgrass (<i>Dactylis glomerata</i>) 4</b>				
Bluestem ( <i>Andropogon</i> )	1	0	0	0
Fingerleaf Paspalum ( <i>Paspalum setaceum</i> )	1	0	0	0
Purpletop ( <i>Tridens flavus</i> )	1	0	0	0
Southern Crabgrass ( <i>Digitaria ciliaris</i> )	1	0	0	0
<b>Peanut (<i>Arachis hypogaea</i>) 2</b>				
Late Leaf Spot [ <i>Passalora personata</i> ( <i>Mycosphaerella</i> )	1	0	0	0
Tomato Spotted Wilt (Tomato Spotted Wilt Virus (TSWV))	1	0	0	0
<b>Pearl Millet (<i>Pennisetum americanum typhoideum</i>) 1</b>				
Southern Chinch Bug ( <i>Blissus insularis</i> )	1	0	0	0

\* Number after name = Number of diagnostic entries

	Confirmed	Not Detected	Suspected	Inconclusive
<b>Soybean (<i>Glycine max</i>) 18</b>				
Anthracnose; Colletotrichum Leaf Spot ( <i>Colletotrichum</i> sp.)	2	0	0	0
Charcoal Rot ( <i>Macrophomina phaseolina</i> )	1	0	0	0
Charcoal Rot ( <i>Macrophomina</i> sp./spp.)	1	0	0	0
Cultural/Environmental Problem (Abiotic disorder)	0	0	1	0
Fusarium Root Rot ( <i>Fusarium</i> sp./spp.)	2	0	0	0
Fusarium Stem Rot ( <i>Fusarium</i> sp./spp.)	1	0	0	0
Fusarium Wilt ( <i>Fusarium oxysporum</i> )	1	0	0	0
Phomopsis Leaf Spot ( <i>Phomopsis</i> sp./spp.)	1	0	0	0
Pod and Stem Blight ( <i>Diaporthe</i> ( <i>Phomopsis</i> ) sp./spp.)	1	0	0	0
Red Crown Rot ( <i>Cylindrocladium crotalariae</i> )	1	0	1	0
Soybean Cyst Nematode (SCN) ( <i>Heterodera glycines</i> )	1	0	0	0
Soybean Downy Mildew ( <i>Peronospora manshurica</i> )	1	0	0	0
Soybean Frogeye Leaf Spot ( <i>Cercospora sojina</i> )	1	0	1	0
Undetermined Injury or Pest (Identification Analysis)	0	0	0	1
<b>Sunflower (<i>Helianthus annuus</i>) 4</b>				
Sunflower Leaf Blight; Stem Spot ( <i>Alternaria</i> ( <i>Alternaria</i> ) <i>helianthi</i> )	1	0	0	0
Alternaria Leaf Spot and Blight ( <i>Alternaria helianthi</i> )	1	0	0	0
Prickly Sida; Prickly Fanpetals ( <i>Sida spinosa</i> )	1	0	0	0
Unknown Abiotic Disorder (Abiotic disorder)	0	0	0	1
<b>Wheat (<i>Triticum aestivum</i>) 7</b>				
Black Head Mold ( <i>Epicoccum nigrum</i> )	2	0	0	0
Black Mold ( <i>Alternaria</i> sp./spp.)	2	0	0	0
Cultural/Environmental Problem (Abiotic disorder)	0	0	1	0
European Field Pansy ( <i>Viola arvensis</i> )	1	0	0	0
Tan Spot; Yellow Leaf Spot ( <i>Pyrenophora</i> (ana. <i>Drechslera</i> ) <i>tritici-repentis</i> )	1	0	0	0

## Insect Identifications, General and from Various Habitats

	Confirmed	Not Detected	Suspected	Inconclusive
<b>Fallow field; idle land (habitat) 1*</b>				
Lone Star Tick ( <i>Amblyomma americanum</i> )	1	0	0	0
Subterranean Termite ( <i>Reticulitermes</i> sp./spp.)	1	0	0	0
<b>Fishing Worm Bed 2</b>				
Earthworm ( <i>Oligochaeta lumbricidae</i> )	1	0	0	0
Springtails (Order collembola)	0	0	0	1
<b>Household; Domestic dwellings (habitat) 25</b>				
Ant, Little Black ( <i>Monomorium minimum</i> )	1	0	0	0
Asian Tiger Mosquito ( <i>Aedes albopictus</i> )	1	0	0	0
Black Soldier Fly ( <i>Hermetia illucens</i> )	1	0	0	0
Ceratopogonid Biting Midge ( <i>Culicoides</i> sp./spp.)	2	0	0	0
Cigarette Beetle ( <i>Lasioderma serricorne</i> )	1	0	0	0
Cockroach ( <i>Blattellidae</i> and <i>Blattidae</i> )	1	0	0	0
Cockroach, Smoky Brown ( <i>Periplaneta fuliginosa</i> )	1	0	0	0
Curculionid ( <i>Conotrachelus</i> sp./spp.)	1	0	0	0
Dermestid Beetles (Family <i>Dermestidae</i> )	1	0	0	0
Drugstore Beetle ( <i>Stegobium paniceum</i> )	2	0	0	0
Earwig ( <i>Euborellia</i> sp./spp.)	1	0	0	0
Eastern Subterranean Termite ( <i>Reticulitermes flavipes</i> )	1	0	0	0
Flea ( <i>Ctenocephalides</i> sp.)	0	0	1	0
Flower Flies (Family <i>Syrphidae</i> )	1	0	0	0
Foreign Grain Beetle ( <i>Ahasverus advena</i> )	1	0	0	0
Humpbacked Fly ( <i>Megaselia scalaris</i> )	1	0	0	0
No insects found	0	0	0	5
Ticks (Order <i>acari</i> )	1	0	0	0
Wireworms (Click Beetles) (Family <i>Elateridae</i> )	1	0	0	0
<b>Insect Identification Request (general) 88</b>				
Acorn weevil, <i>Curculio</i> sp.	1	0	0	0
Ant, Argentine ( <i>Linepithema humile</i> )	1	0	0	0
Ant, Black Field ( <i>Formica subsericea</i> )	1	0	0	0
Ant, Pharaoh ( <i>Monomorium pharaonis</i> )	1	0	0	0
Ant, Pyramid ( <i>Dorymyrmex</i> sp.)	1	0	0	0
Ant, Red Imported Fire Ant ( <i>Solenopsis invicta</i> )	3	0	0	0
Bark Lice (Order <i>psocoptera</i> )	2	0	0	0
Bed Bug ( <i>Cimex lectularius</i> )	3	0	0	0
Bedbugs, <i>Cimex</i> (Family <i>Cimicidae</i> )	0	0	1	0
Beetles (Order <i>Coleoptera</i> )	1	0	0	0
Biting Midges (Family <i>Ceratopogonidae</i> )	1	0	0	0
Booklice (Family <i>Psocidae</i> )	1	0	0	0
Bostrichid Beetle ( <i>Sinoxylon anale</i> )	0	0	1	0
Brown Recluse Spider ( <i>Loxosceles reclusa</i> )	1	0	0	0

\* Number after name = Number of diagnostic entries

	Confirmed	Not Detected	Suspected	Inconclusive
<b>Insect Identification Request (general) 88</b>				
Butterflies; Moths; Caterpillars (Order lepidoptera)	1	0	0	0
Carpet Beetles (Family Dermestidae)	3	0	0	0
Cigarette Beetle ( <i>Lasioderma serricorne</i> )	1	0	0	0
Clover Mite ( <i>Bryobia praetiosa</i> )	1	0	0	0
Cockroach, Brownbanded ( <i>Supella longipalpa</i> )	1	0	0	0
Cockroach, German ( <i>Blattella germanica</i> )	1	0	0	0
Crickets (Family Gryllidae)	1	0	0	0
Curculionid Beetle ( <i>Anthonomus</i> sp./spp.)	1	0	0	0
Darkling Beetles (Family Tenebrionidae)	1	0	0	0
Dermestid Beetles (Family Dermestidae)	0	1	0	0
Drugstore Beetle ( <i>Stegobium paniceum</i> )	3	0	0	0
Eastern Subterranean Termite ( <i>Reticulitermes flavipes</i> )	6	0	2	0
Flat Bark Beetles (Family Cucujidae)	1	0	0	0
Flea, Cat ( <i>Ctenocephalides felis</i> )	3	0	0	0
Flies (Order Diptera)	1	0	0	0
Fruit Fly ( <i>Drosophila</i> sp./spp.)	1	0	0	0
Gall Wasp (Family Cynipidae)	1	0	0	0
Garden Millipede ( <i>Oxidus gracilis</i> )	1	0	0	0
Granary Weevil ( <i>Sitophilus granarius</i> )	1	0	0	0
Green June Beetle ( <i>Cotinis nitida</i> )	1	0	0	0
Ground Beetle ( <i>Calosoma scrutator</i> )	1	0	0	0
Ground Spider ( <i>Gnaphosa</i> sp./spp.)	1	0	0	0
Hister Beetles (Family Histeridae)	1	0	0	0
Leafhoppers (Family Cicadellidae)	1	0	0	0
Lice (Suborder Mallophaga)	2	0	0	0
Long-bodied Cellar Spider ( <i>Pholcus phalangioides</i> )	1	0	0	0
Masked Hunter ( <i>Reduvius personatus</i> )	1	0	0	0
Midges (Family Chironomidae)	1	0	0	0
No arthropods found	0	1	0	0
No insects found	0	0	0	2
Old House Borer ( <i>Hylotrupes bajulus</i> )	1	0	1	0
Psychodid Moth Fly ( <i>Psychoda alternata</i> )	1	0	0	0
Puss Caterpillar ( <i>Megalopyge opercularis</i> )	1	0	0	0
Ringlegged Earwig ( <i>Euborellia annulipes</i> )	1	0	0	0
Sawtoothed Grain Beetle ( <i>Oryzaephilus surinamensis</i> )	1	0	0	0
Scarab Beetle ( <i>Phyllophaga</i> sp./spp.)	1	0	0	0
Shining Flower Beetle (Family Phalacridae)	1	0	0	0
Six Spotted Tiger Beetle ( <i>Cicindela sexguttata</i> )	1	0	0	0
Smooth Springtails (Family Isotomidae; Collembola)	0	0	0	1

	Confirmed	Not Detected	Suspected	Inconclusive
<b>Insect Identification Request (general) 88</b>				
Southern Lyctus Beetle ( <i>Lyctus planicollis</i> )	1	0	0	0
Springtails (Order collembola)	3	0	0	0
Stink Bug ( <i>Brochymena</i> sp./spp.)	1	0	0	0
Subterranean Termites (Family Rhinotermitidae)	0	0	0	2
Tenebrionid Beetle; ( <i>Platydema</i> sp./spp.)	1	0	0	0
Termites (Order isoptera)	1	0	0	0
Tick, American Dog ( <i>Dermacentor variabilis</i> )	2	0	0	0
Tick, Brown Dog ( <i>Rhipicephalus sanguineus</i> )	1	0	0	0
Tick ( <i>Ixodes</i> sp.)	0	0	1	0
Ticks (Order acari)	1	0	0	0
Tropical Fowl Mite ( <i>Ornithonyssus bursa</i> )	1	0	0	0
Warehouse Beetle ( <i>Trogoderma variabile</i> )	1	0	0	0
Wolf Spider (Family Lycosidae; Araneae)	1	0	0	0
Insect parts	0	0	0	2
Pill Beetle ( <i>Cytilus alternatus</i> )	1	0	0	0
<b>Pet Food 4</b>				
Drugstore Beetle ( <i>Stegobium paniceum</i> )	1	0	0	0
Pharaoh Ant ( <i>Monomorium pharaonis</i> )	1	0	0	0
Red Flour Beetle ( <i>Tribolium castaneum</i> )	1	0	0	0
Sawtoothed Grain Beetle ( <i>Oryzaephilus surinamensis</i> )	1	0	0	0
<b>Pink Trumpet Tree (<i>Tabebuia heterophylla</i>) 1</b>				
Ants (Family Formicidae)	1	0	0	0
<b>Soil (habitat) 2</b>				
Japanese Beetle ( <i>Popillia japonica</i> )	1	0	0	0
Scarab Beetle ( <i>Phyllophaga</i> sp./spp.)	1	0	0	0
<b>Turfgrass (Turfgrass mixed species) 15</b>				
Cat Flea ( <i>Ctenocephalides felis</i> )	1	0	0	0
<b>Unknown Plants/Weeds; (Mixed species) 2</b>				
Chrysomelid Flea Beetle ( <i>Altica</i> sp./spp.)	1	0	0	0
<b>Woody Ornamentals (Woody ornamentals mixed species) 2</b>				
Sooty Mold (Unidentified Insect-related Fungus)	1	0	0	0
Whiteflies (Family Aleyrodidae)	1	0	0	0

## Plant and Mushroom Identifications, General and from Various Habitats

	Confirmed	Not Detected	Suspected	Inconclusive
<b>Plant Id request (general) 26*</b>				
American Columbo ( <i>Frasera caroliniensis</i> )	2	0	0	0
Baldwin's Spikerush ( <i>Eleocharis baldwinii</i> )	1	0	0	0
Bladderwort ( <i>Utricularia</i> sp.)	2	0	0	0
Buffalo Gourd ( <i>Cucurbita foetidissima</i> )	1	0	0	0
Carolina Horsenettle ( <i>Solanum carolinense</i> )	1	0	0	0
Cogongrass ( <i>Imperata cylindrica</i> )	1	0	0	0
Composites (Family Asteraceae)	0	0	0	1
Cuban Jute ( <i>Sida rhombifolia</i> )	1	0	0	0
Filamentous Green Algae ( <i>Spirogyra</i> ; <i>Oedogonium</i> ; <i>Cladophora</i> sp./spp.)	2	0	0	0
Green Squill ( <i>Ledebouria pauciflora</i> )	1	0	0	0
Guadeloupe cucumber ( <i>Melothria pendula</i> )	1	0	0	0
Hoary False Alyssum ( <i>Berteroa incana</i> )	1	0	0	0
Mother-of-Thousands ( <i>Kalanchoe daigremontiana</i> )	1	0	0	0
Princess Tree; Royal Paulownia ( <i>Paulownia tomentosa</i> )	1	0	0	0
Setaria Foxtails ( <i>Setaria</i> sp./spp.)	2	0	0	0
Silverleaf Nightshade ( <i>Solanum elaeagnifolium</i> )	1	0	0	0
Virginia Buttonweed ( <i>Diodia virginiana</i> )	1	0	0	0
Watershield ( <i>Brasenia schreberi</i> )	1	0	0	0
Waterthread Pondweed ( <i>Potamogeton diversifolius</i> )	1	0	0	0
White Poplar ( <i>Populus alba</i> )	1	0	0	0
<b>Ponds; Lakes; impounded waters (Aquatic habitat) 12</b>				
Algae (General)	1	0	0	1
Alligatorweed ( <i>Alternanthera philoxeroides</i> )	1	0	0	0
Bird Bath algae ( <i>Haematococcus</i> )	1	0	0	0
Brazilian Watermeal ( <i>Wolffia brasiliensis</i> )	1	0	0	0
Dotted Duckweed ( <i>Spirodela punctata</i> )	1	0	0	0
Filamentous Green Algae ( <i>Spirogyra</i> ; <i>Oedogonium</i> ; <i>Cladophora</i> sp./spp.)	1	0	0	0
Manyflower Marshpennywort ( <i>Hydrocotyle umbellata</i> )	2	0	0	0
<i>Spirogyra</i> (filamentous green algae)	1	0	0	0
Waterthread Pondweed ( <i>Potamogeton diversifolius</i> )	1	0	0	0
Humped Bladderwort ( <i>Utricularia gibba</i> )	1	0	0	0
<b>Turfgrass (Turfgrass mixed species) 13</b>				
Annual Blue-eyed Grass ( <i>Sisyrinchium rosulatum</i> )	1	0	0	0
Annual Trampweed ( <i>Facelis retusa</i> )	1	0	0	0
Bermuda Grass ( <i>Cynodon</i> sp./spp.)	1	0	0	0
Black Cherry ( <i>Prunus serotina</i> )	1	0	0	0
Carolina Geranium ( <i>Geranium carolinianum</i> )	1	0	0	0
Fescue ( <i>Festuca</i> sp./spp.)	1	0	0	0

\* Number after name = Number of diagnostic entries

	Confirmed	Not Detected	Suspected	Inconclusive
<b>Turfgrass (Turfgrass mixed species) 13</b>				
Florida Betony ( <i>Stachys floridana</i> )	1	0	0	0
Garden Vetch ( <i>Vicia sativa</i> )	1	0	0	0
Greenbriar sp. ( <i>Smilax</i> )	1	0	0	0
Purple Nutsedge ( <i>Cyperus rotundus</i> )	1	0	0	0
Rattail Fescue ( <i>Vulpia myuros</i> )	1	0	0	0
Slender Yellow Woodsorrel ( <i>Oxalis dillenii</i> )	1	0	0	0
Windowbox Woodsorrel ( <i>Oxalis rubra</i> )	1	0	0	0
<b>Unknown crops; unknown plants (Mixed species) 1</b>				
Sugarcane Plumegrass ( <i>Saccharum giganteum</i> )	1	0	0	0
<b>Vegetables (Mixed species) 1</b>				
Pigweed ( <i>Amaranthus</i> sp./spp.)	1	0	0	0
<b>Fallow field; idle land (habitat) 2</b>				
Caley Pea ( <i>Lathyrus hirsutus</i> )	1	0	0	0
Green algae ( <i>Dictyochlorella</i> sp.) Family Radiococcaceae	0	0	1	0
<b>Mushroom Identifications 2</b>				
Indian Bread; Matsuhoda ( <i>Wolfiporia (Poria) cocos</i> )	1	0	0	0
Yellow Houseplant Mushroom [ <i>Leucocoprinus birnbaumii</i> ( <i>Lepiota lutea</i> )]	1	0	0	0



## Diagnoses and Identifications of Regulatory Significance

### Plant Problem Clinic Samples

	Confirmed	Not Detected	Suspected	Inconclusive
<b>Common Camellia (<i>Camellia japonica</i>) 1*</b>				
Ramorum Blight ( <i>Phytophthora ramorum</i> )	0	1	0	0
<b>Geranium ('cultivated') (<i>Pelargonium sp./spp.</i>) 1</b>				
Bacterial Wilt ( <i>Ralstonia solanacearum</i> race 3 biovar 2)	0	1	0	0
<b>Kudzu (<i>Pueraria lobata</i>) 1</b>				
Japanese Dodder ( <i>Cuscuta japonica</i> )	1	0	0	0
<b>Plant Id request (general) 1</b>				
Cogongrass ( <i>Imperata cylindrica</i> )	1	0	0	0
<b>Tangelo (<i>Citrus paradisi x reticulata</i>) 1</b>				
Citrus Greening, Huanglongbing (Asian) ( <i>Candidatus Liberibacter asiaticus</i> )	0	1	0	0

### Molecular Plant Pathogen

#### Detection Lab Samples

##### Plant Samples

<b>Azalea; Rhododendron (<i>Rhododendron sp./spp.</i>) 10</b>				
Aerial Stem Blight ( <i>Phytophthora sp./spp.</i> )	7	0	0	0
Phytophthora Not Detected	0	1	0	0
Phytophthora Twig Blight ( <i>Phytophthora syringae</i> )	2	0	0	0
<b>Camellia (<i>Camellia sp./spp.</i>) 12</b>				
Phytophthora Not Detected	0	9	0	0
Ramorum Blight ( <i>Phytophthora ramorum</i> )	3	0	0	0
<b>Common Camellia (<i>Camellia japonica</i>) 1</b>				
Phytophthora Not Detected	0	1	0	0
<b>Hybrid Orchid (<i>X epilaeliocattleya sp./spp.</i>) 12</b>				
Viruses not Detected	0	12	0	0
<b>Japanese Andromeda (<i>Pieris japonica</i>) 2</b>				
Phytophthora Not Detected	0	2	0	0
<b>Lemon (<i>Citrus limon</i>) 1</b>				
Citrus Greening, Huanglongbing (Asian) ( <i>Candidatus Liberibacter asiaticus</i> )	1	0	0	0
<b>Peach (<i>Prunus persica</i>) 24</b>				
Plum Pox Virus Not Detected	0	24	0	0
<b>Rhododendron (<i>Rhododendron sp./spp.</i>) 3</b>				
Phytophthora Not Detected	0	1	0	0
Phytophthora Leaf Blight ( <i>Phytophthora cactorum</i> )	1	0	0	0

\* Number after name = Number of diagnostic entries

	Confirmed	Not Detected	Suspected	Inconclusive
<b>Rhododendron (Rhododendron sp./spp.) 3</b>				
Phytophthora Root Rot (Phytophthora cryptogea)	1	0	0	0
<b>Sasanqua Camellia (Camellia sasanqua) 3</b>				
Phytophthora Not Detected	0	3	0	0
<b>Viburnum (Viburnum sp./spp.) 3</b>				
Phytophthora Not Detected	0	3	0	0
<b>Wintergreen (Gaultheria procumbens) 2</b>				
Phytophthora Not Detected	0	2	0	0

---

### Soil and Water Samples

---

#### **Ponds; Lakes; impounded waters (Aquatic habitat) 44**

Phytophthora cryptogea	2	0	0	0
Phytophthora gonapodyies	10	0	0	0
Phytophthora Not Detected	0	22	0	0
Phytophthora sp./spp.	7	0	0	0
Phytophthora syringae	3	0	0	0

#### **Potting Soil; growing media (General (nursery)) 2**

Phytophthora Not Detected	0	2	0	0
---------------------------	---	---	---	---

#### **River: stream: creek: waterway (Aquatic habitat) 16**

Phytophthora gonapodyies	8	0	0	0
Phytophthora nicotianae	2	0	0	0
Phytophthora Not Detected	0	4	0	0
Phytophthora sp./spp.	2	0	0	0

#### **Water Sample (Aquatic habitat) 11**

Phytophthora sp./spp.	4	0	0	0
Phytophthora Not Detected	0	7	0	0